



DLF1055 / DLH1055 V2 10.4" TFT LCD, LED Backlight 1000nits,XGA

10.4" TFT LCD panel, built-in 1000 nits high bright for sunlight readable LCD display, high transmittance color filter, high transmission polarizing plates, Low Power Consumption, suitable for kiosk, advertising, POS, marine, transportation, gaming, studio display, gas pump.

Key Features

- Sunlight Readable
- LED Backlight
- High Shock & Vibration Resistance
- Low Power Consumption
- Wide Operation Temp. (-30°C~70°C)
- High Uniformity (90%)
- Low EMI Noise
- Wide Dimming
- Life Expectancy (70,000hrs)



Specifications

V1

Model No.	DLF1055 V2	DLH1055 V2
Description	10.4" TFT LCD, LED Backlight 1000nits,XGA	
Display Area (mm)	210.4 x 157.8 mm	
Brightness	1000 cd/m ²	
Resolution	1024 x 768 (XGA)	
Contrast Ratio	800 : 1	
Pixel Pitch (mm)	0.0685(H) x 0.2055(V)	
Viewing Angle	+88°~88°(H), +88°~88°(V)	
Display Colors	16.2M	
Response Time (Typical)	40ms (Typical)	
Sync	LVDS	
Power Consumption	12W/ 16W	
Dimensions (mm)	225.2x176.3x8.7	
Weight (Net)	650g	
LED Driving Board	LID 10A	
Control Board (Optional)	<input type="checkbox"/> AD6038G <input type="checkbox"/> AD6038GA <input type="checkbox"/> AD6038GD <input type="checkbox"/> AD2662GDHVA <input type="checkbox"/> AD2662GDVAR	
<input type="checkbox"/> AD6038G	VGA	
<input type="checkbox"/> AD6038GA	VGA+Audio	
<input type="checkbox"/> AD6038GD	VGA+DVI	
<input type="checkbox"/> AD2662GDHVA	VGA+CVBS+S-Video+Audio (Optional DVI / Component /HDMI)	
<input type="checkbox"/> AD2662GDVAR	VGA+DVI (Optional S-Video/ Component / Audio)	
F / R Control Button	<input type="checkbox"/> 5 Key <input type="checkbox"/> 4 Key	
<input type="checkbox"/> 5 Key	Power Switch, Menu, Select (+,-), Auto	
<input type="checkbox"/> 4 Key	Power Switch, Menu, Select (+,-),	
OSD Menu	Brightness, Contrast, H/V Position, Color, Phase, Clock...	
Optional	<input type="checkbox"/> AOT <input type="checkbox"/> Touch Screen	

Specifications are subject to change without notice.

All brands or product names are trademarks or registered trademarks of their respective companies.

DLF= Panel+LED Driving Board

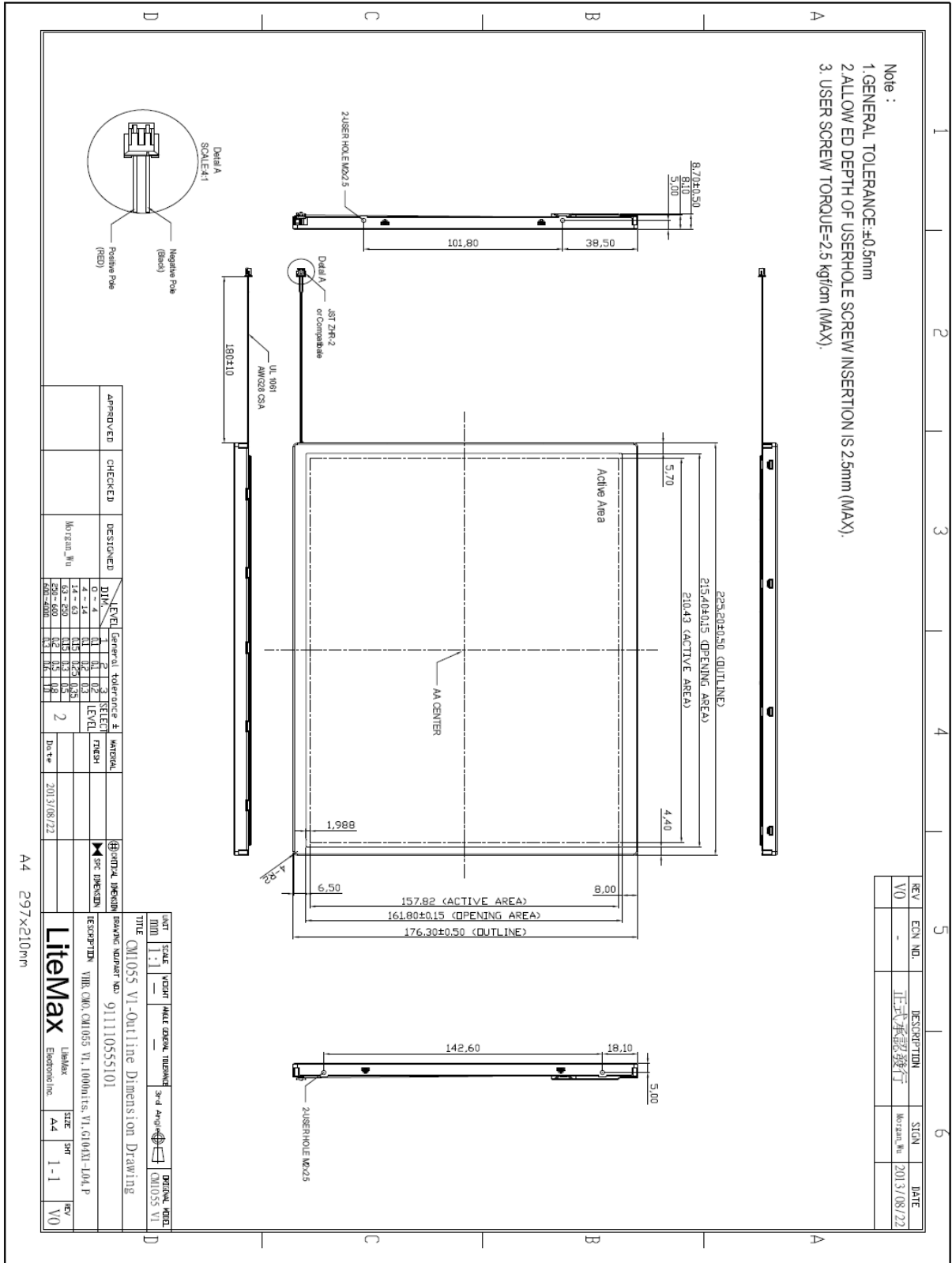
DLH= Panel+LED Driving Board+Control Board



Mechanical Drawing

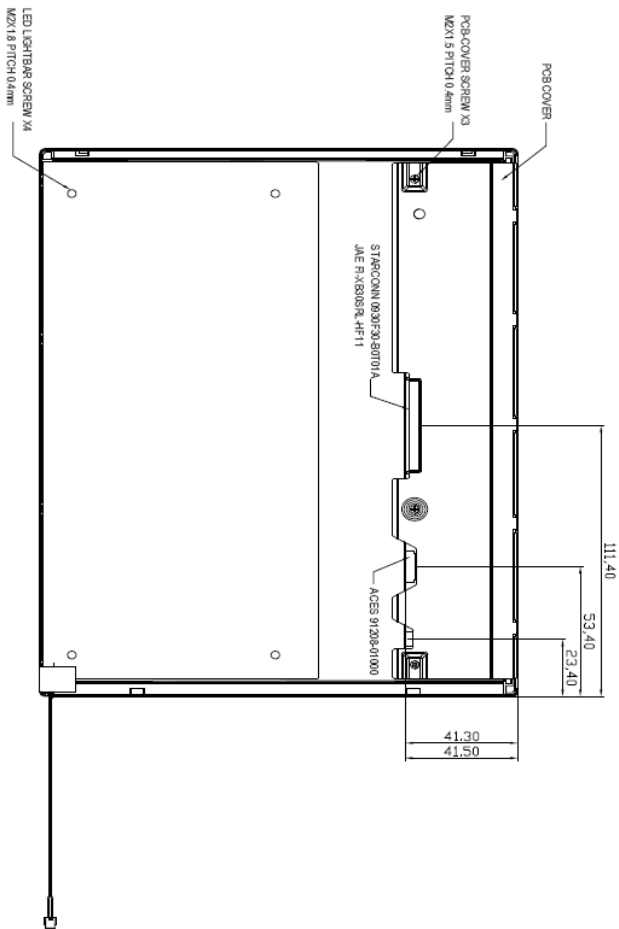
Outline Dimensions

Unit:mm





- Note :
1. GENERAL TOLERANCE: $\pm 0.5\text{mm}$
 2. ALLOW ED DEPTH OF USERHOLE SCREW INSERTION IS 2.5mm (MAX).
 3. USER SCREW TORQUE=2.5 kgf/cm (MAX).



REV	ECN NO.	DESCRIPTION	STCN	DATE
V0	-	正式承認發行	Morgan, Wu	2013/08/22

APPROVED	CHECKED	DESIGNED	LEVEL	GENERAL TOLERANCE ±	MATERIAL
		Morgan, Wu	1	0.1	OPTICAL ITEMEN SPEC DIMENSION
			2	0.15	
			3	0.2	
			4	0.25	
			5	0.3	
			6	0.4	
			7	0.5	
			8	0.6	
			9	0.8	
			10	1.0	
			11	1.2	
			12	1.5	
			13	2.0	
			14	2.5	
			15	3.0	
			16	4.0	
			17	5.0	
			18	6.3	
			19	8.0	
			20	10.0	
			21	12.5	
			22	16.0	
			23	20.0	
			24	25.0	
			25	31.5	
			26	40.0	
			27	50.0	
			28	63.0	
			29	80.0	
			30	100.0	
			31	125.0	
			32	160.0	
			33	200.0	
			34	250.0	
			35	315.0	
			36	400.0	
			37	500.0	
			38	630.0	
			39	800.0	
			40	1000.0	

A4 297x210mm

UNIT	SCALE	WEIGHT	ANGLE	GENERAL ITEMEN	3rd Angle	DECIMAL VALUE
MM	1:1	-	-		☑	CH1055 VI
TITLE CH1055 VI-Outline Dimension Drawing						
DRAWING NUMBER NO. 91111055S101						
DESCRIPTION VHA, CH10, CH1055 VI, 1000pieces, VI, G104X1-104, P						
Litemax Litemax						
Epson Inc. Epson Inc.						
SIZE A4						
SHEET 1-1						
REV V0						



Ordering Information

Part Number	Description
DLF1055-ENN-A11	10.4",1000nits,XGA,LID10A05.5 in 1,V2
DLH1055-ENN-I11	10.4",1000nits,XGA,LID10A05.AD6038GD,5 in 1,DC 12V,V2

Optional Accessories

Part Number	Description
840612051100	ADAPTER.12V.5A.60W.EA1050A,P
810618301010	CABLE.POWER.AC.1830mm USA type
810618301090	CABLE,POWER,AC,1830mm Europe type
810618301050	CABLE.POWER.AC.1830mm UK type
810618301170	CABLE.POWER,AC,1830mm Australia type
810618301030	CABLE.POWER.AC.1830mm Japan type