



DLF1268 / DLH1268 V3 12.1" TFT LCD, LED Backlight 1600nits,XGA(1024x768)

12.1" TFT LCD panel, built-in 1600 nits high bright for sunlight readable LCD display, high transmittance color filter, high transmission polarizing plates, Low Power Consumption, suitable for automation, marine, transportation , gas pump.

Key Features

- Sunlight Readable
- LED Backlight
- XGA(1024x768) High Definition
- High Shock & Vibration Resistance
- Wide operation Temperature
- Low Power Consumption
- High Uniformity
- Low EMI Noise
- Wide Dimming
- Life Expectancy



Specifications

V1

Model No.	DLF1268 V3	DLH1268 V3
Description	12.1" TFT LCD, LED Backlight 1600nits,XGA(1024x768)	
Display Area (mm)	245.76(H) x 184.32(V)	
Brightness	1600 cd/m ²	
Resolution	1024x768 (XGA)	
Contrast Ratio	700 : 1	
Pixel Pitch (mm)	0.24(H) x 0.24(V)	
Pixel Pre Inch (PPI)	106	
Viewing Angle	+80°~-80°(H), +80°~-80°(V)	
Color Saturation (NTSC)	80%	
Display Colors	262K/16.2M	
Response Time (Typical)	35ms	
Sync	LVDS	
Operating Temperature	-30°C to +85°C	
Storage Temperature	-30°C to +85°C	
Power Consumption	10.8W	12.5W
Dimensions (mm)	272x204.6x12.5mm	
Weight (Net)	0.5kg	0.55Kg
LED Driving Board	LID12A	
Control Board (Optional)	<input type="checkbox"/> AD6038GA <input type="checkbox"/> AD6038GD	
<input type="checkbox"/> AD6038GA	VGA+Audio	
<input type="checkbox"/> AD6038GD	VGA+DVI	
F / R Control Button	<input type="checkbox"/> 4 Key	
<input type="checkbox"/> 4 Key	Power Switch, Menu, Select (+,-),	
OSD Menu	Brightness, Contrast, H/V Position, Color, Phase, Clock...	
Optional	<input type="checkbox"/> AOT <input type="checkbox"/> Touch Screen	

Specifications are subject to change without notice.

All brands or product names are trademarks or registered trademarks of their respective companies.

DLF= Panel+LED Driving Board

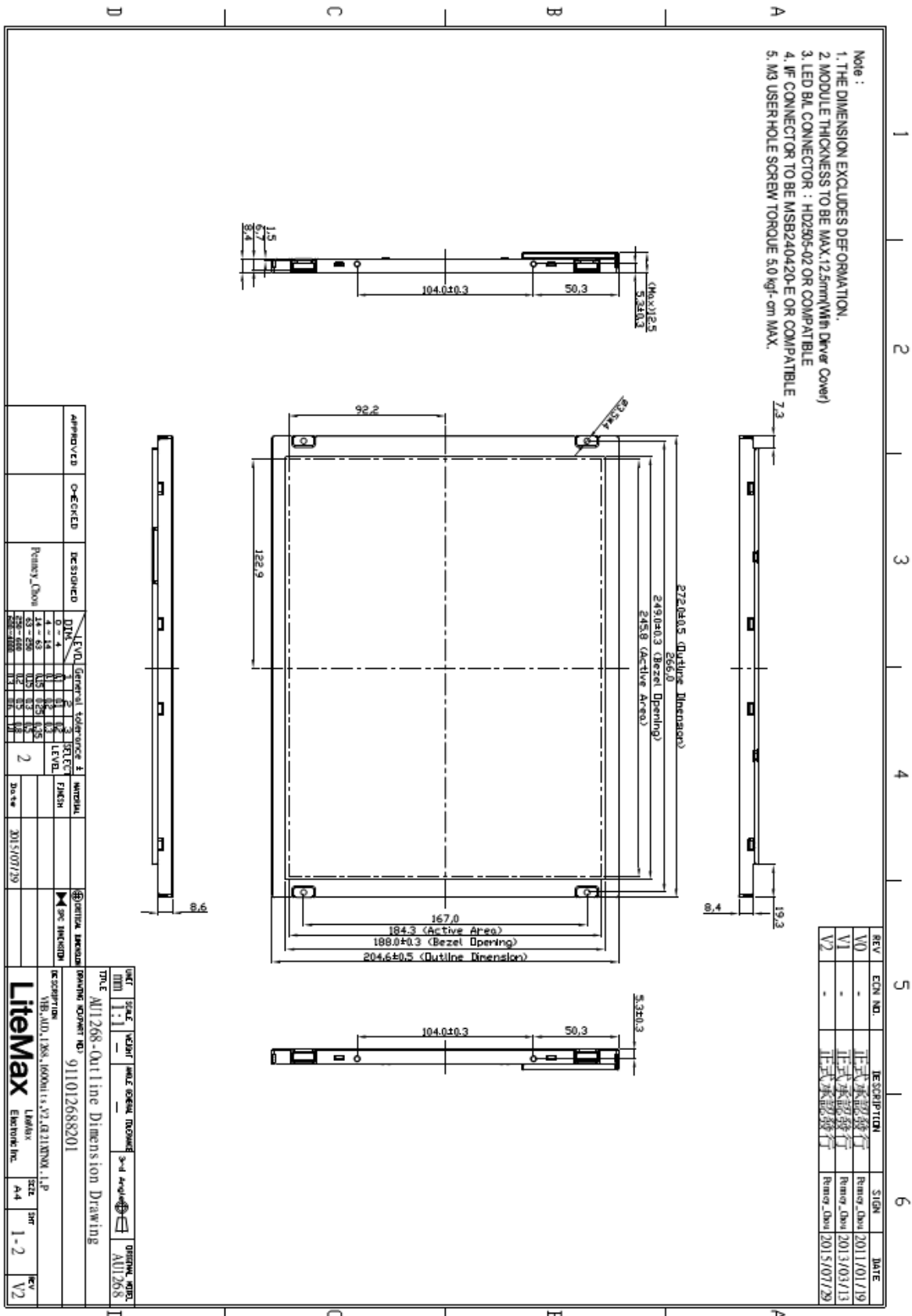
DLH= Panel+LED Driving Board+Control Board



Mechanical Drawing

Outline Dimensions

Unit:mm





Ordering Information

Part Number	Description
DLF1268-ENN-A21	12",1600nits,XGA,LID12A.DC 12V,w/o boss,5 in 1,V03
DLH1268-ENN-I21	12",1600nits,XGA,LID12A.AD6038GD,DC 12V,w/o boss.5 in 1,V03

Optional Accessories

Part Number	Description
840612031100	ADAPTER.12V.3.33A.40W,PAA040F,P
810618301010	CABLE.POWER.AC.1830mm USA type
810618301090	CABLE,POWER,AC,1830mm Europe type
810618301050	CABLE.POWER.AC.1830mm UK type
810618301170	CABLE.POWER,AC,1830mm Australia type
810618301031	CABLE.POWER.AC.1830mm Japan type