



## DLF1768 / DLH1768 V2 17" TFT LCD, LED Backlight 1600nits,SXGA(1280x1024)

17" TFT LCD panel, built-in 1600 nits high bright for sunlight readable LCD display, high transmittance color filter, high transmission polarizing plates, Low Power Consumption, suitable for kiosk, advertising, POS, marine, transportation, gaming, studio display, gas pump.

### Key Features

- Sunlight Readable
- LED Backlight
- SXGA(1280x1024) High Definition
- High Shock & Vibration Resistance
- Low Power Consumption
- High Uniformity
- Low EMI Noise
- Wide Dimming
- Life Expectancy



## Specifications

V1

Model No.	DLF1768 V2	DLH1768 V2
Description	17" TFT LCD, LED Backlight 1600nits,SXGA(1280x1024)	
Display Area (mm)	337.9(H) x 270.3(V) mm	
Brightness	1600 cd/m <sup>2</sup>	
Resolution	1280x1024 (SXGA)	
Contrast Ratio	1000 : 1	
Pixel Pitch (mm)	0.264(H) x 0.264(V)	
Pixel Per Inch (PPI)	96	
Viewing Angle	170°(H), 160°(V)	
Color Saturation (NTSC)	83%	
Display Colors	16.7M	
Response Time (Typical)	5ms	
Sync	LVDS	
Operating Temperature	0°C ~ 50°C	
Storage Temperature	-20°C ~ 60°C	
Power Consumption	27W / 32.5W	
Dimensions (mm)	358.5x296.5x20.5mm	
Weight (Net)	2.0kg	
LED Driving Board	LID17A	
Control Board (Optional)	<input type="checkbox"/> AD2662GDVAR	
<input type="checkbox"/> AD2662GDVAR	VGA+DVI (Optional S-Video/ Component / Audio)	
F / R Control Button	<input type="checkbox"/> 4 Key	
<input type="checkbox"/> 4 Key	Power Switch, Menu, Select (+,-),	
OSD Menu	Brightness, Contrast, H/V Position, Color, Phase, Clock...	
Optional	<input type="checkbox"/> AOT <input type="checkbox"/> Touch Screen	

*Specifications are subject to change without notice.*

*All brands or product names are trademarks or registered trademarks of their respective companies.*

**DLF**= Panel+LED Driving Board

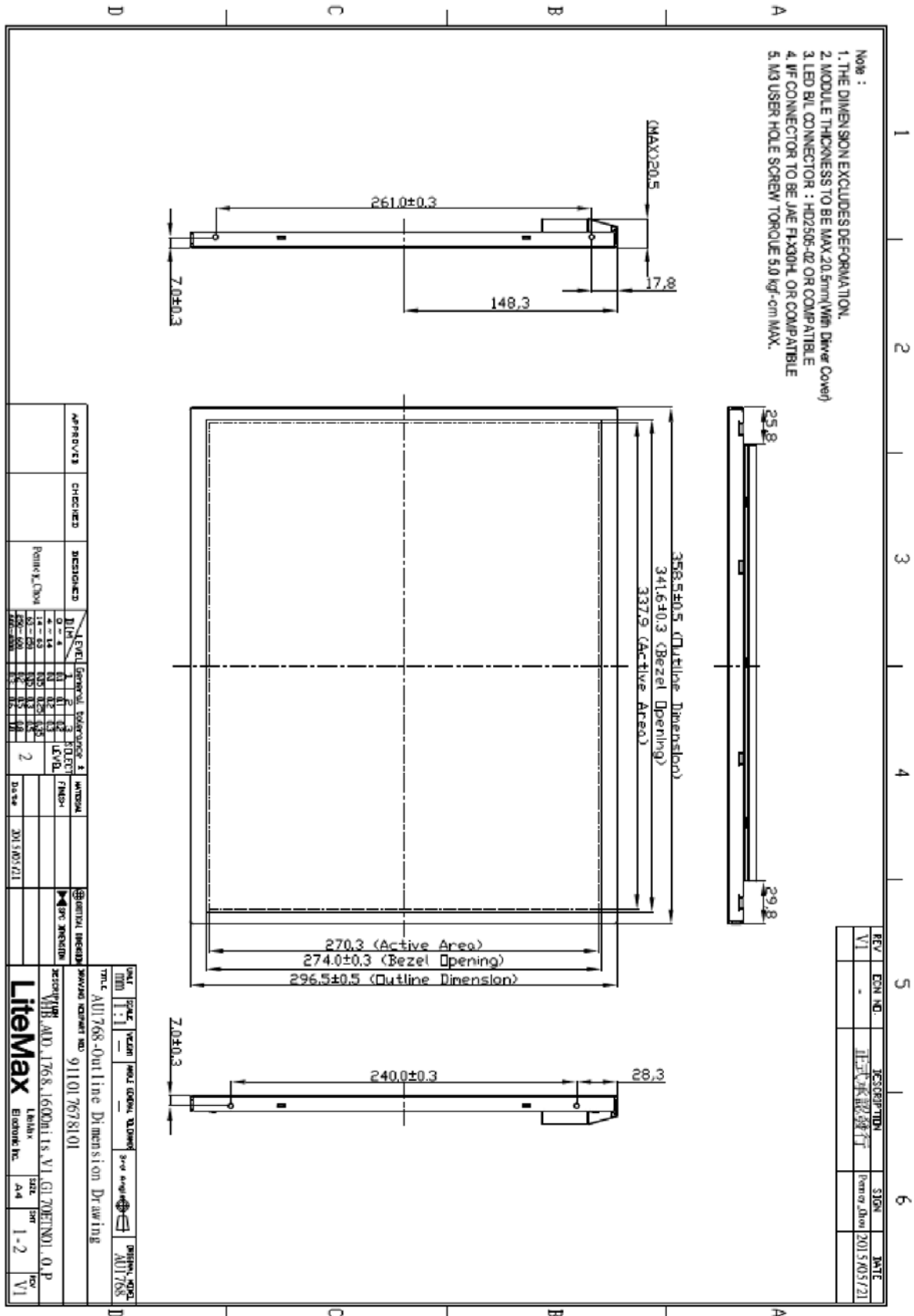
**DLH**= Panel+LED Driving Board+Control Board

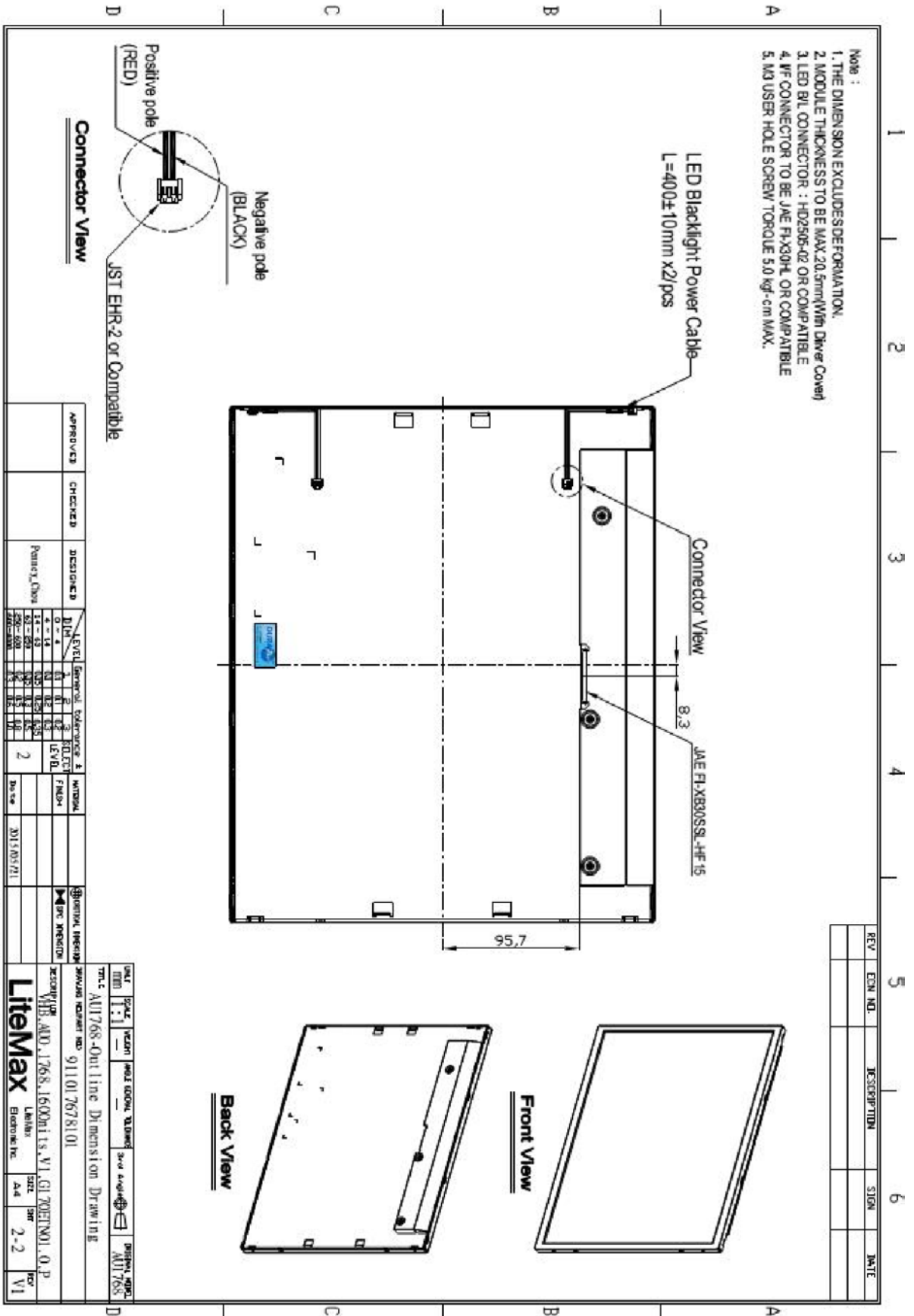


# Mechanical Drawing

## Outline Dimensions

Unit:mm







### Ordering Information

Part Number	Description
DLF1768-ENN-A21	17",1600nits,SXGA,LID17A.5 in 1,V02
DLH1768-ENN-G21	17",1600nits,SXGA,LID17A.AD2662GD,DC12V,5 in 1,V02

### Optional Accessories

Part Number	Description
<b>840612051100</b>	ADAPTER.12V.5A.60W.EA1050A,P
<b>810618301010</b>	CABLE.POWER.AC.1830mm USA type
<b>810618301090</b>	CABLE,POWER,AC,1830mm Europe type
<b>810618301050</b>	CABLE.POWER.AC.1830mm UK type
<b>810618301170</b>	CABLE.POWER,AC,1830mm Australia type
<b>810618301031</b>	CABLE.POWER.AC.1830mm Japan type