



DLF2137 / DLH2137

21.5" Wide TFT LCD, LED Backlight 1400nits,FHD (1920x1080)

21.5" wide is a full high definition (FHD) LCD panel, built-in 1400 nits high bright for sunlight readable LCD display, high transmittance color filter, high transmission polarizing plates, Low Power Consumption, suitable for kiosk, advertising, POS, marine, transportation, gaming, studio display, gas pump.

Key Features

- Sunlight Readable
- LED Backlight
- High Shock & Vibration Resistance
- Low Power Consumption
- High Uniformity
- Low EMI Noise
- Wide Dimming
- Life Expectancy



Specifications

V1

Model No.	DLF2137	DLH2137
Description	21.5" Wide TFT LCD, LED Backlight 1400 nits, FHD	
Display Area (mm)	476 (H) x 267.7(V)	
Brightness	1,400 cd/m ²	
Resolution	1920 x 1080 (FHD)	
Contrast Ratio	1300 : 1	
Pixel Pitch (mm)	0.08265(H) x 0.24795(V)	
Viewing Angle	178°(H), 178°(V)	
Display Colors	16.7M colors	
Response Time (Typical)	5 ms	
Sync	LVDS	
Power Consumption	45W / 50W	
Dimensions (mm)	497.6(W) x 292.2(H) x 13.35(D)mm	
Weight (Net)	1.79 Kg	
LED Driving Board	LID21	
Control Board (Optional)	<input type="checkbox"/> AD2662GD <input type="checkbox"/> AD2662GDVAR	
<input type="checkbox"/> AD2662GD	VGA+DVI	
<input type="checkbox"/> AD2662GDVAR	VGA+DVI (Optional S-Video/ Component / Audio)	
F / R Control Button	<input type="checkbox"/> 5 Key <input type="checkbox"/> 4 Key	
<input type="checkbox"/> 5 Key	Power Switch, Menu, Select (+,-), Auto	
<input type="checkbox"/> 4 Key	Power Switch, Menu, Select (+,-),	
OSD Menu	Brightness, Contrast, H/V Position, Color, Phase, Clock...	
Optional	<input type="checkbox"/> AOT <input type="checkbox"/> Touch Screen	

Specifications are subject to change without notice.

All brands or product names are trademarks or registered trademarks of their respective companies.

DLF= Panel+LED Driving Board

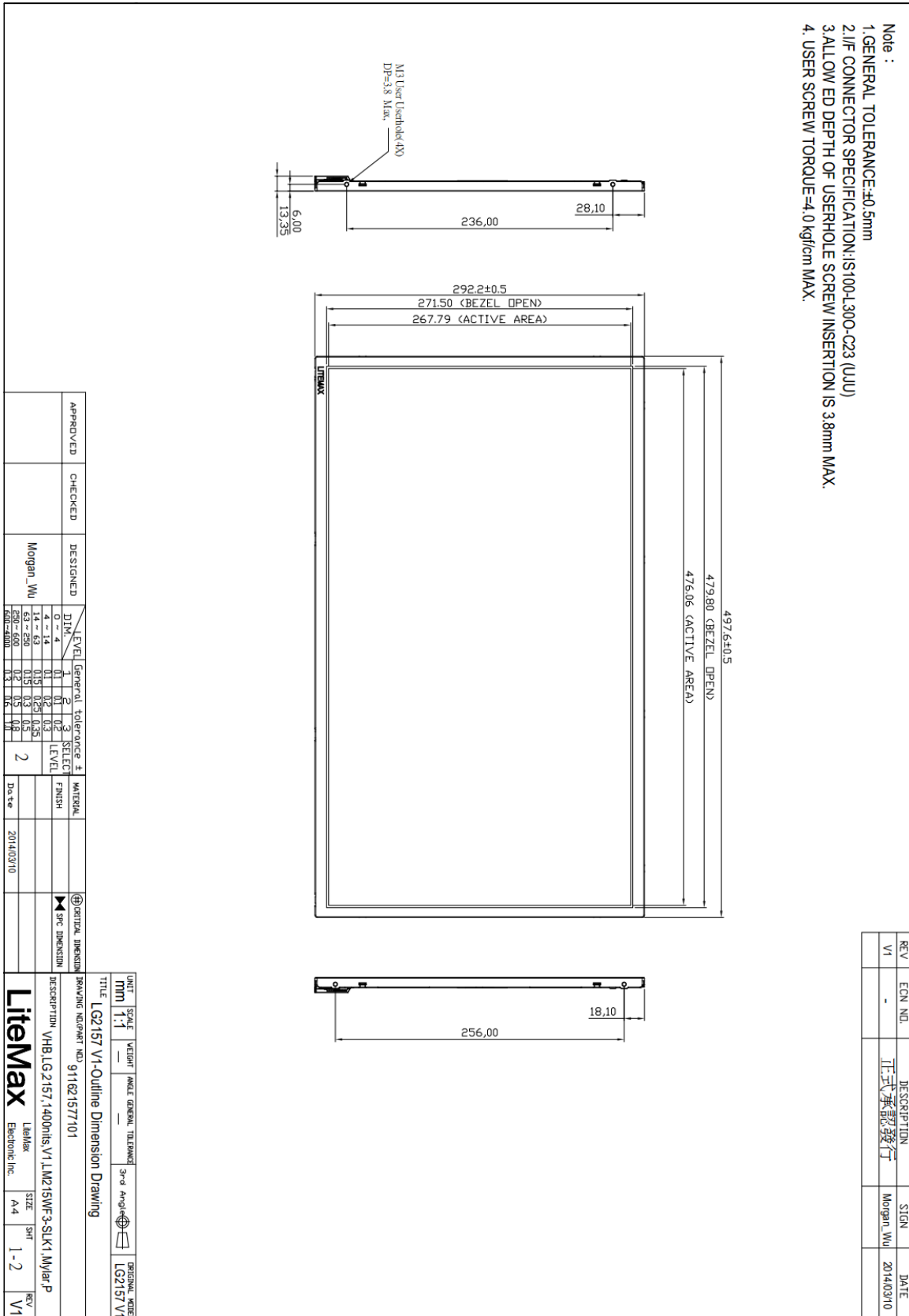
DLH= Panel+LED Driving Board+Control Board



Mechanical Drawing

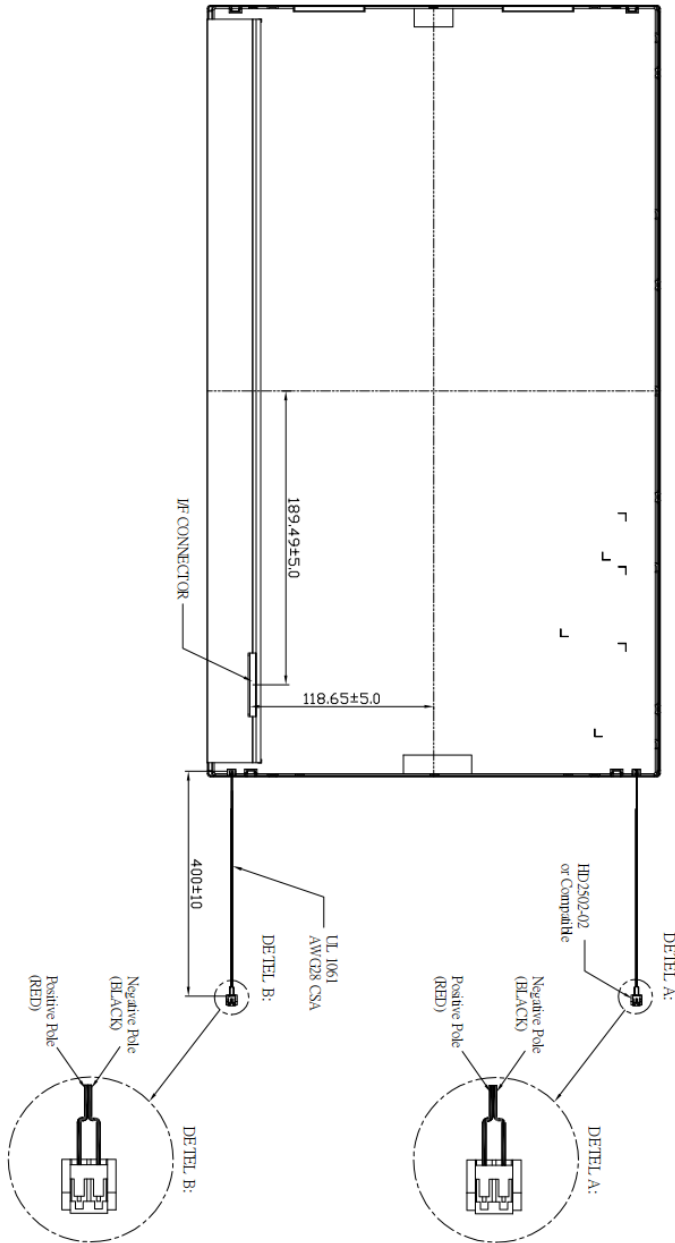
Outline Dimensions

Unit:mm





- Note :
1. GENERAL TOLERANCE: ±0.5mm
 2. I/F CONNECTOR SPECIFICATION: IS100-L300-C23 (UJU)
 3. ALLOW ED DEPTH OF USERHOLE SCREW INSERTION IS 3.8mm MAX.
 4. USER SCREW TORQUE=4.0 kgf/cm MAX.



REV	ECN NO.	DESCRIPTION	SIGN	DATE
V1	-	正式承認發行	Morgan_Wu	2014/03/10

APPROVED	CHECKED	DESIGNED	LEVEL	General tolerance ±	MATERIAL	DATE
		Morgan_Wu	DIN	1		2014/03/10
			0 ~ 4	0.1		
			4 ~ 14	0.1		
			14 ~ 63	0.15		
			63 ~ 250	0.2		
			250 ~ 630	0.2		
			630 ~ 4000	0.3		

UNIT	SCALE	WEIGHT	ANGLE	GENERAL TOLERANCE	3rd Angle	ORIGINAL MODEL
mm	1:1	-	-	±0.5	☑	LG2157 V1

TITLE: LG2157 V1-Outline Dimension Drawing

DESCRIPTION: V1, LG 2157, 1400nits, V1, LM215WF3-SLK1, Mylar P

BRANDING MARK/PART NO.: 911621577101

LiteMax LabelMax Electronic Inc. SIZE: A4 SH: 2-2 REV: V1



Ordering Information

Model Name	Description
DLF2137-ENN-A01	21.5", 1400nits, FHD, LID21A.5-in-1, V1
DLH2137-ENN-G01	21.5", 1400nits, FHD, LID21A.AD2662GD, DC12V input.5-in-1, V1

Optional Accessories

Part Number	Description
840612051210	ADAPTER, AC/DC, 12V/5.4A, 65W, Atech OEM A065112-TDx.4P SLIDING CAP, P
810618301010	CABLE.POWER.AC.1830mm USA type
810618301090	CABLE, POWER, AC, 1830mm Europe type
810618301050	CABLE.POWER.AC.1830mm UK type
810618301170	CABLE.POWER.AC, 1830mm Australia type
810618301030	CABLE.POWER.AC.1830mm Japan type