



## DLF2208-I / DLH2208-I

### 22" Wide TFT LCD, LED Backlight 1600nits,WSXGA (1680x1050)

22" wide is a (WSXGA) LCD panel, built-in 1600 nits high bright for sunlight readable LCD display, high transmittance color filter, high transmission polarizing plates, Low Power Consumption, suitable for kiosk, advertising, POS, gaming, studio display, gas pump.

#### Key Features

- Sunlight Readable
- LED Backlight
- High Shock & Vibration Resistance
- Wide Dimming
- Life Expectancy



### Specifications

V1

Model No.	DLF2208-I	DLH2208-I
Description	22" Wide TFT LCD, LED Backlight 1600 nits, WSXGA	
Display Area (mm)	473.76 (H) x 296.1(V)	
Brightness	1,600 cd/m <sup>2</sup>	
Resolution	1680 x 1050 (WSXGA)	
Contrast Ratio	1400 : 1	
Pixel Pitch (mm)	0.282(H) x 0.282(V)	
Viewing Angle	170°(H), 160°(V)	
Display Colors	16.7M colors	
Response Time (Typical)	5 ms	
Sync	LVDS	
Power Consumption	34W / 40W	
Dimensions (mm)	493.7(W) x 320.1(H) x 11(D)mm	
Weight (Net)	1.9 kg	
LED Driving Board	LID22	
Control Board (Optional)	<input type="checkbox"/> AD2662GVA <input type="checkbox"/> AD2662GVADR	
	<input type="checkbox"/> AD2662GVA    VGA+S-Video+Composite+Audio	
	<input type="checkbox"/> AD2662GVADR    VGA+S-Video+Composite+Audio (Optional DVI / RS232)	
F / R Control Button	<input type="checkbox"/> 5 Key <input type="checkbox"/> 4 Key	
	<input type="checkbox"/> 5 Key    Power Switch, Menu, Select (+,-), Auto	
	<input type="checkbox"/> 4 Key    Power Switch, Menu, Select (+,-),	
OSD Menu	Brightness, Contrast, H/V Position, Color, Phase, Clock...	
Optional	<input type="checkbox"/> AOT <input type="checkbox"/> Touch Screen	

Specifications are subject to change without notice.

All brands or product names are trademarks or registered trademarks of their respective companies.

**DLF**= Panel+LED Driving Board

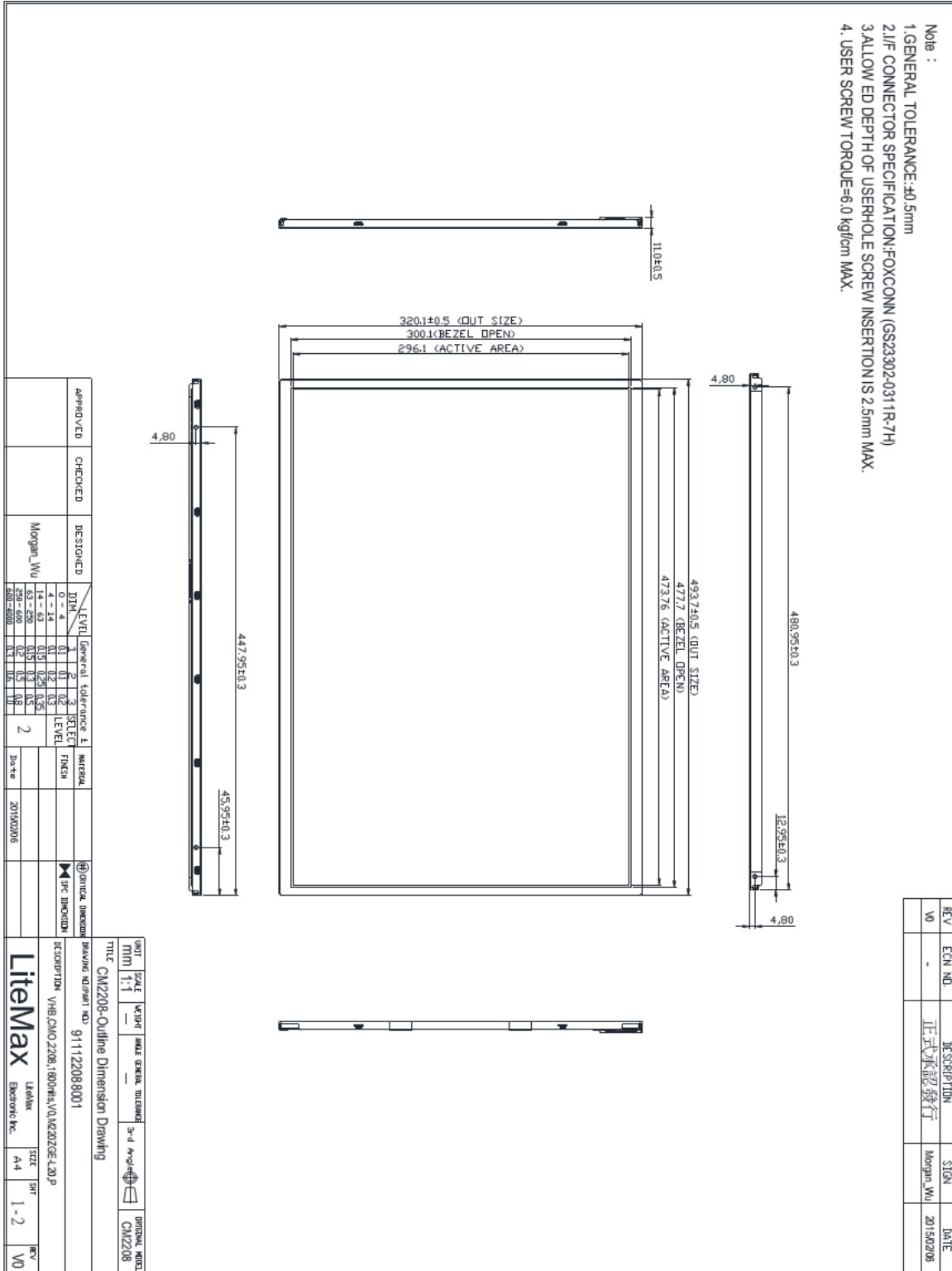
**DLH**= Panel+LED Driving Board+Control Board



# Mechanical Drawing

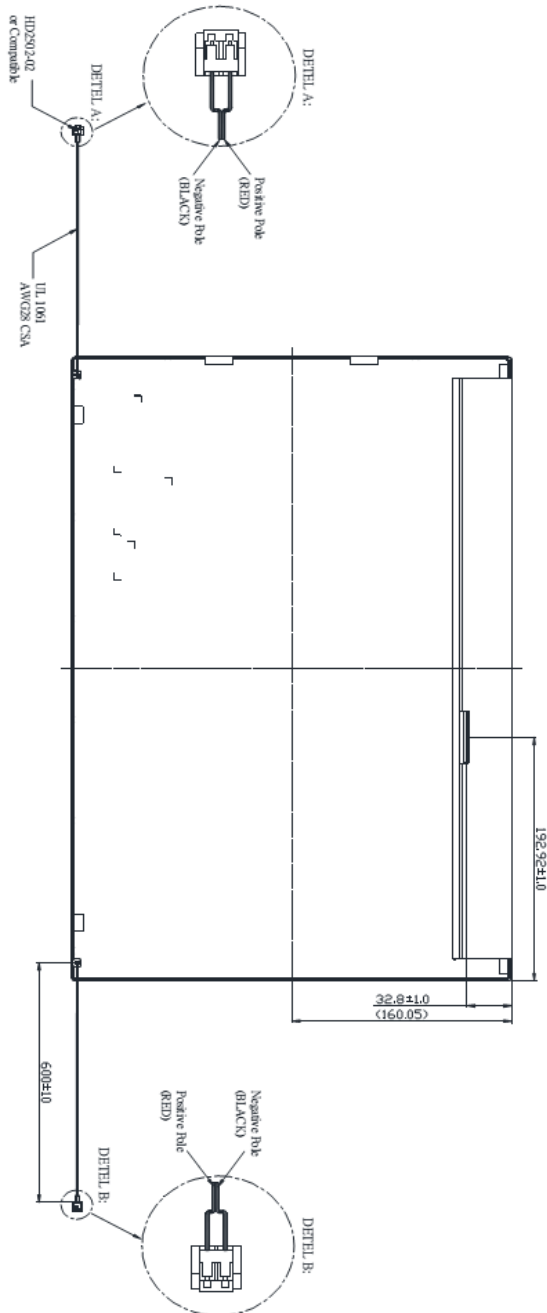
## Outline Dimensions

Unit:mm





- Note :
1. GENERAL TOLERANCE: ±0.5mm
  2. I/F CONNECTOR SPECIFICATION: FOXCONN (GS2330240311R-7H)
  3. ALLOW ED DEPTH OF USERHOLE SCREW INSERTION IS 2.5mm MAX.
  4. USER SCREW TORQUE=6.0 kgf/cm MAX.



REV	ECON NO.	DESCRIPTION	SIGN	DATE
V0	-	正式承認發行	Morgan_Wu	2015/02/06

APPROVED	CHECKED	DESIGNED	DATE
		Morgan_Wu	2015/02/06

EVAL	General	tolerance	3	SELECT	MATERIAL
4-14	U1	U1	U1	U1	FINISH
43-50	U15	U15	U15	U15	
51-60	U2	U2	U2	U2	
61-80	U3	U3	U3	U3	
81-100	U4	U4	U4	U4	
					2

UNIT	SCALE	VALUET	MODEL	ORIGIN	DATE	REVISION
MM	1:1					

TITLE: OM2208-Outline Dimension Drawing

ISSUANCE NUMBER NO: 911122080001

PROJECT NO: VHS-OM2208-1600rHS-V01220208-120P

**LiteMax** Litemax  
Ebrock Inc. SIZE: 3R  
A4 2-2 REV: V0



### Ordering Information

Model Name	Description
DLF2208-INN-A01	22",1600nits,WSXGA,LID22A,5 in 1,V01
DLH2208-ENN-G01	22",1600nits,WSXGA,LID22A,AD2662GVA+DVI,DC12V,5 in1,V01

### Optional Accessories

Part Number	Description
840612051210	ADAPTER,AC/DC,12V/5.4A,65W,Atech OEM A065112-TDx.4P SLIDING CAP,P
810618301010	CABLE.POWER.AC.1830mm USA type
810618301090	CABLE,POWER,AC,1830mm Europe type
810618301050	CABLE.POWER.AC.1830mm UK type
810618301170	CABLE.POWER,AC,1830mm Australia type
810618301030	CABLE.POWER.AC.1830mm Japan type