



DLF/DLH2325-E

23" Wide TFT LCD, LED Backlight 1000nits,FHD (1920x1080)

DLF/DLH2325-E is a 23" wide open frame display, full high definition (FHD) LCD panel, Low power consumption is remarkable. The monitor brings outstanding display quality, and guaranteeing product life cycle longevity, stability, and reliability. Perfectly suitable for Kiosk, ATM, POS, gaming machine, and gas pump.

Key Features

- LED Backlight
- High Shock & Vibration Resistance
- Low Power Consumption
- Wide Viewing Angle
- High Uniformity
- Low EMI Noise

Applications

Kiosk
Gaming
POS



Specifications

V1

Model No.	DLF/DLH2325-E
Description	23" Wide TFT LCD, LED Backlight 1000 nits, FHD
Active Display Area (mm)	509.184 (H) x 286.416(V) mm
Brightness	1000 cd/m ²
Resolution	1920 x 1080 (FHD)
Contrast Ratio	1000:1
Pixel Pitch (mm)	0.2652(H) x 0.2652(V) mm
Viewing Angle	R/L 178(Typ.), U/D 178(Typ.)
Display Colors	16.7M colors
Response Time (Typical)	14 ms
Sync	LVDS
Power Consumption	39/42W
Outline Dimensions (mm)	533.2 x 312 x 11.9 mm
Weight (Net)	2Kg
LED Driving Board	LID23A
Control Board (Optional)	<input type="checkbox"/> AD6038GD
<input type="checkbox"/> AD2662GD	VGA+DVI
F / R Control Button	<input type="checkbox"/> 4 Key
<input type="checkbox"/> 4 Key	Power Switch, Menu, Select (+,-),
OSD Menu	Brightness, Contrast, H/V Position, Color, Phase, Clock...
Optional	<input type="checkbox"/> AOT <input type="checkbox"/> Touch Screen

Specifications are subject to change without notice.

All brands or product names are trademarks or registered trademarks of their respective companies.

DLF= Panel + LED Driving Board

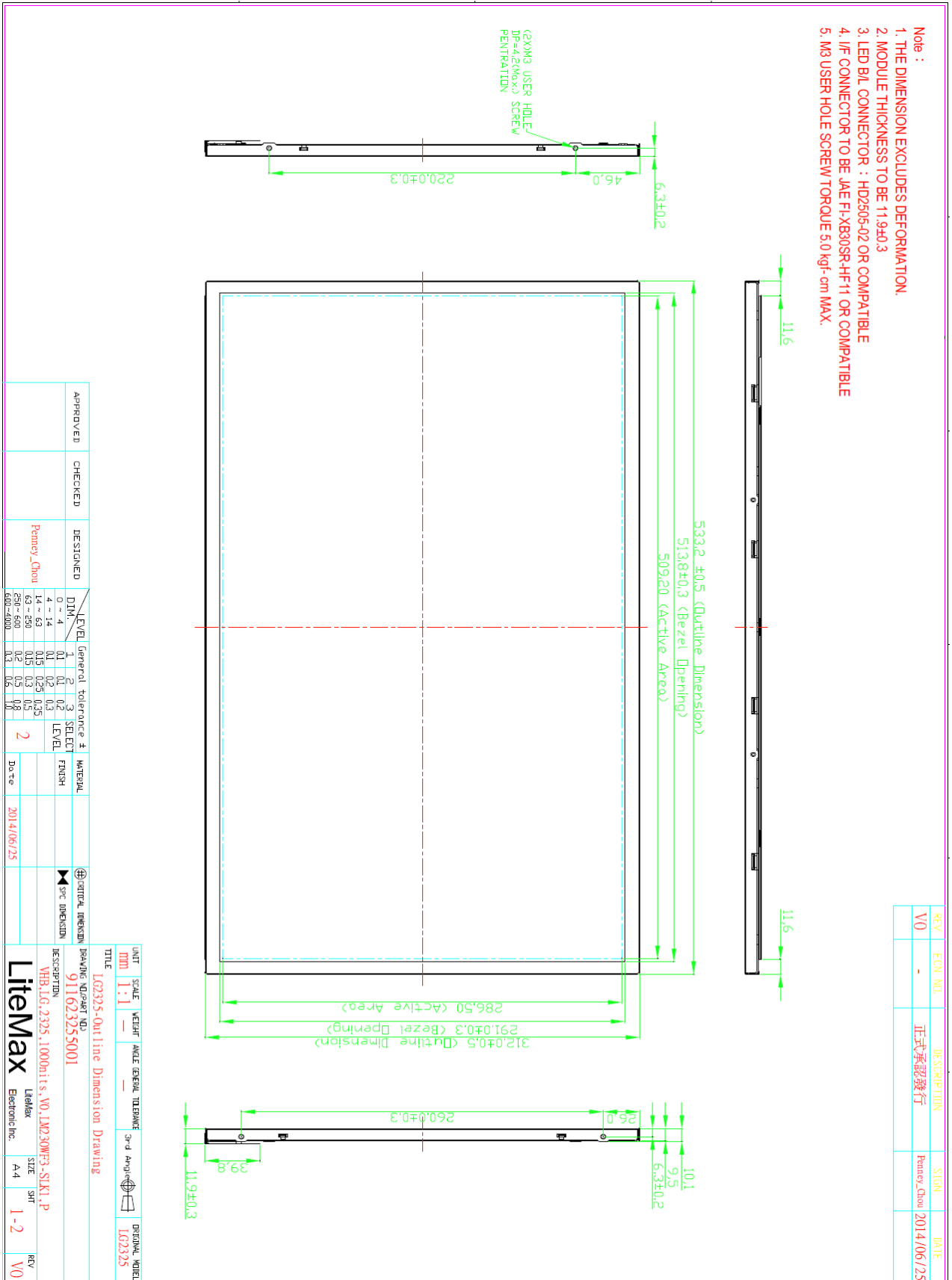
DLH= Panel + LED Driving Board + Control Board



Mechanical Drawing

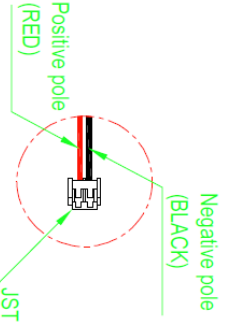
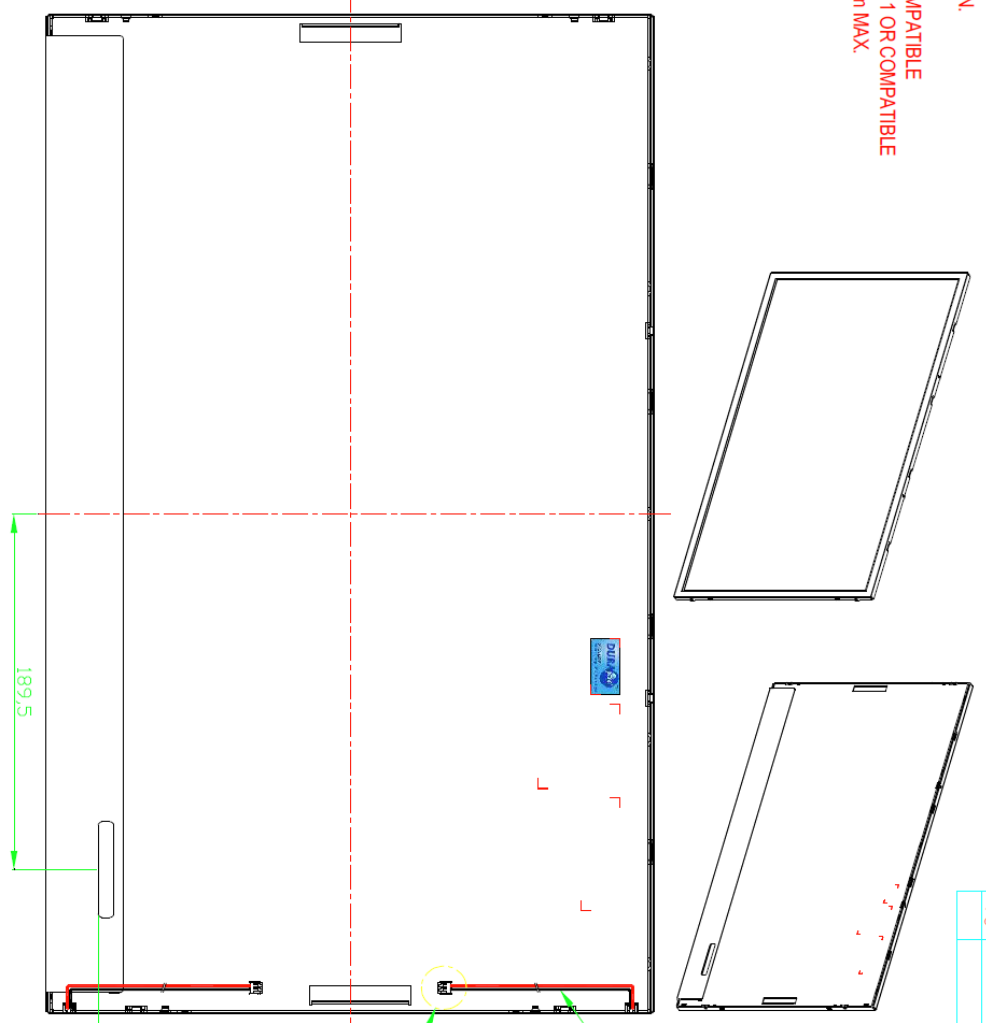
Outline Dimensions

Unit:mm





- Note :
1. THE DIMENSION EXCLUDES DEFORMATION.
 2. MODULE THICKNESS TO BE 11.9±0.3
 3. LED B/L CONNECTOR : HD2505-02 OR COMPATIBLE
 4. I/F CONNECTOR TO BE JAE FI-XB303RA-HF11 OR COMPATIBLE
 5. M3 USER HOLE SCREW TORQUE 5.0 kgf-cm MAX.



Connector View

APPROVED	CHECKED	DESIGNED	LEVEL	General	tolerance	±	SELECT	MATERIAL	FINISH	DATE
		Pemey,Chou	DIM.	0	0.1	0.2	LEVEL			2014/06/25
			4 ~ 14	0.1	0.2	0.3				
			14 ~ 63	0.15	0.25	0.35				
			63 ~ 250	0.2	0.3	0.5				
			250 ~ 600	0.2	0.5	0.8				
			600 ~ 4000	0.3	0.6	1.0				

UNIT	SCALE	WEIGHT	ANGLE	GENERAL TOLERANCE	3rd ANGLE	DIRECTIONAL MODEL
mm	1:1					ISO25925
TITLE						
IG2325-Outline Dimension Drawing						
DRAWING NO/PART NO						
911623255001						
DESCRIPTION						
VHB.IG.2325.1000h.its.V0.LM230WF3-SLK1.P						
LitexMax						
Electronic Inc.						
SIZE	SHT	REV				
A4	2-2	V0				

REV	EQV. NO.	DESCRIPTION	SIGN.	DATE
V0	-	正式承認發行	Pemey,Chou	2014/06/25



Ordering Information

Model Name	Description
DLF2325-ENN-A01	23",1000nits,FHD,LID23A,5 in 1,V01
DLH2325-ENN-I01	23",1000nits,FHD,LID23A,AD6038GD,DC12V,5 in 1,V01

Optional Accessories

Part Number	Description
980000460010	SET.OTHER,ADAPTER REWORK.60W PAA060F WITH.POWER DIN 4pin lock,P
810618301010	CABLE.POWER.AC.1830mm USA type
810618301090	CABLE.POWER.AC,1830mm Europe type
810618301050	CABLE.POWER.AC.1830mm UK type
810618301170	CABLE.POWER,AC,1830mm Australia type
810618301031	CABLE.POWER.AC.1830mm Japan type