



DLF3245 / DLH3245 V2

32" TFT LCD, LED Backlight 1200nits,WXGA

32" is a high definition (HD) LCD panel, built-in 1200 nits high bright for sunlight readable LCD display, high transmittance color filter, high transmission polarizing plates, Low Power Consumption, suitable for kiosk, advertising, POS, marine, transportation, gaming, studio display, gas pump.

Key Features

- Sunlight Readable
- LED Backlight
- High Shock & Vibration Resistance
- Low Power Consumption
- High Uniformity
- Low EMI Noise
- Wide Dimming
- Life Expectancy



Specifications

V1

Model No.	DLF3245 V2	DLH3245 V2
Description	32" TFT LCD, LED Backlight 1200nits,WXGA	
Display Area (mm)	697.69 (H) x 392.26(V) mm	
Brightness	1,200 cd/m ²	
Resolution	1366 x 768 (WXGA)	
Contrast Ratio	5000 : 1	
Pixel Pitch (mm)	0.51075(H) x 0.51075(V)	
Viewing Angle	176°(H), 176°(V)	
Display Colors	16.7M colors	
Response Time (Typical)	7ms (Typical)	
Power Consumption	77W	82W
Dimensions (mm)	737.6x426.2x16mm	
Weight (Net)	5.2Kg	5.4Kg
LED Driving Board	LID32A	
Control Board	<input type="checkbox"/> AD2662GDHVA <input type="checkbox"/> AD2662GDVAR <input type="checkbox"/> AD2662GDHMMVAR <input type="checkbox"/> AD2662GDHVA VGA+CVBS+S-Video+Audio (Optional DVI / HDMI) <input type="checkbox"/> AD2662GDVAR VGA+DVI (Optional CVBS / S-Video/ Component / Audio) <input type="checkbox"/> AD2662GDHMMVAR VGA (Optional CVBS / S-Video/ Component / Audio / DVI / HDMI)	
F / R Control Button	<input type="checkbox"/> 5 Key <input type="checkbox"/> 4 Key <input type="checkbox"/> 5 Key Power Switch, Menu, Select (+,-), Auto <input type="checkbox"/> 4 Key Power Switch, Menu, Select (+,-),	
OSD Menu	Brightness, Contrast, H/V Position, Color, Phase, Clock...	
Optional	<input type="checkbox"/> AOT <input type="checkbox"/> Touch Screen	

Specifications are subject to change without notice.

All brands or product names are trademarks or registered trademarks of their respective companies.

DLF= Panel+LED Driving Board

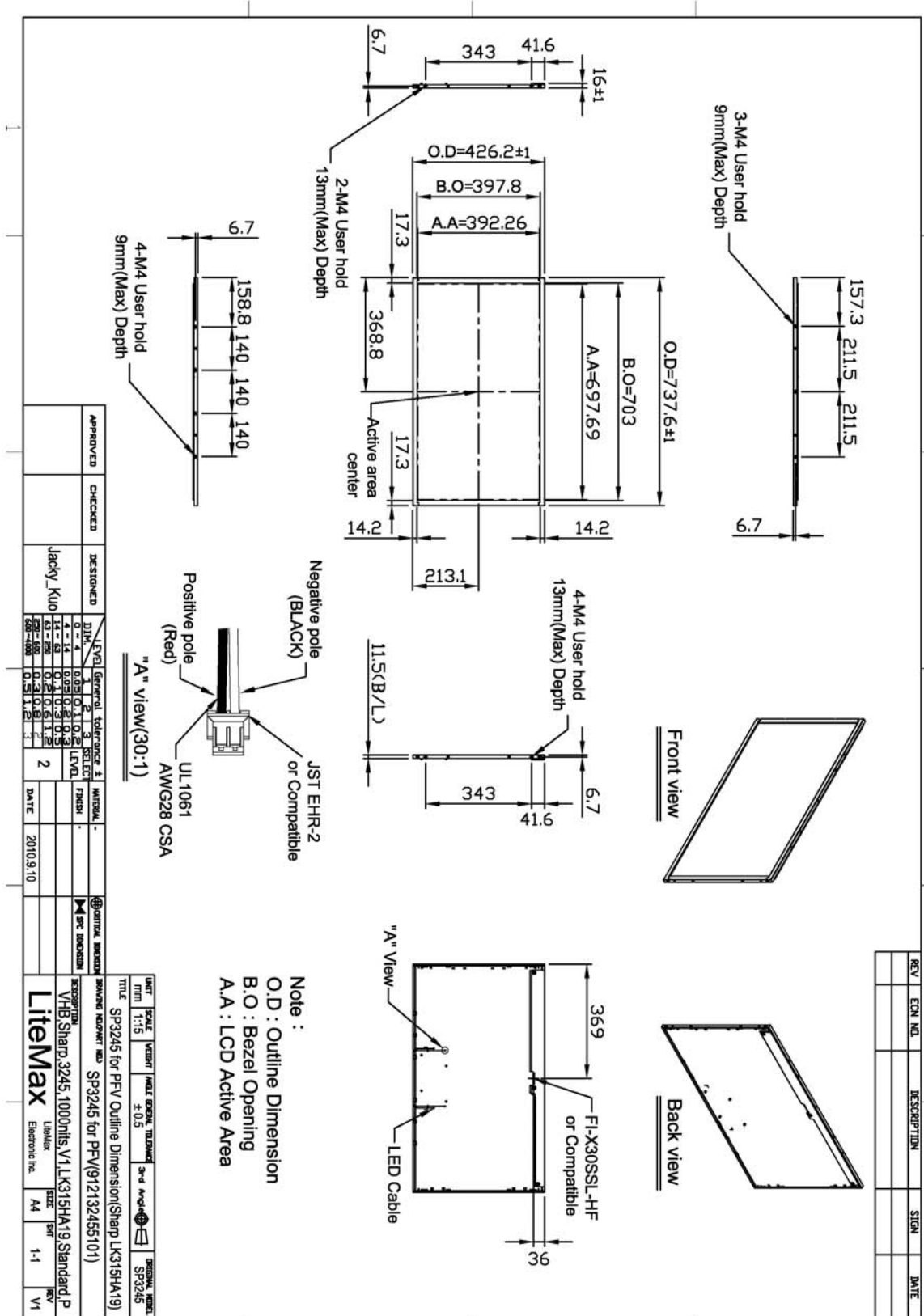
DLH= Panel+LED Driving Board+Control Board



Mechanical Drawing

Outline Dimensions

Unit:mm





Ordering Information

Model Name	Description
DLF3245-ENN-A11	32", 1200nits, WXGA, LID32A.V2(2 in1)
DLH3245-ENN-G11	32", 1200nits, WXGA, LID32A.AD2662GD, AC100~240V, V2(2 in1)

Optional Accessories

Part Number	Description
810618301010	CABLE.POWER.AC.1830mm USA type
810618301090	CABLE,POWER,AC,1830mm Europe type
810618301050	CABLE.POWER.AC.1830mm UK type
810618301170	CABLE.POWER,AC,1830mm Australia type
810618301030	CABLE.POWER.AC.1830mm Japan type