



DLO1506-S

15" TFT LCD, LED Backlight 1000nits,XGA(1024x768)

15" TFT LCD panel, built-in 1000 nits high bright for sunlight readable LCD display, high transmittance color filter, high transmission polarizing plates, Low Power Consumption, suitable for kiosk, advertising, POS, marline, transportation, gaming, studio display, gas pump.

Key Features

- Ultra Brightness: 1000nits
- LED Backlight
- High Shock & Vibration Resistance
- Low Power Consumption
- High Uniformity
- Low EMI Noise
- Wide Viewing Angle
- Wide Operation temperature
- Life Expectancy



Specifications

V1

Model No.	DLO1506-S
Description	15" TFT LCD, LED Backlight 1000nits,XGA(1024x768)
Display Area (mm)	304.1(H) x 228.1(V) mm
Brightness	1000 cd/m ²
Resolution	1024x768 (XGA)
Contrast Ratio	1700 : 1
Pixel Pitch (mm)	0.297(H) x 0.297(V)
Viewing Angle	85°~85°(H), 85°~85°(V)
Display Colors	16.7M
Response Time (Typical)	35ms
Power Consumption	17 W
Dimensions (mm)	389 x 325 x 60.1 (mm)
Weight (Net)	3.8Kg
LED Driving Board	LID15B
Control Board (Optional)	<input type="checkbox"/> AD6038GD
<input type="checkbox"/> AD6038GD	VGA+DVI
Control Button	<input type="checkbox"/> 4 Key
<input type="checkbox"/> 4 Key	Power Switch, Menu, Select (+,-),
OSD Menu	Brightness, Contrast, H/V Position, Color, Phase, Clock...
Optional	<input type="checkbox"/> AOT <input type="checkbox"/> Touch Screen

Specifications are subject to change without notice.

All brands or product names are trademarks or registered trademarks of their respective companies.

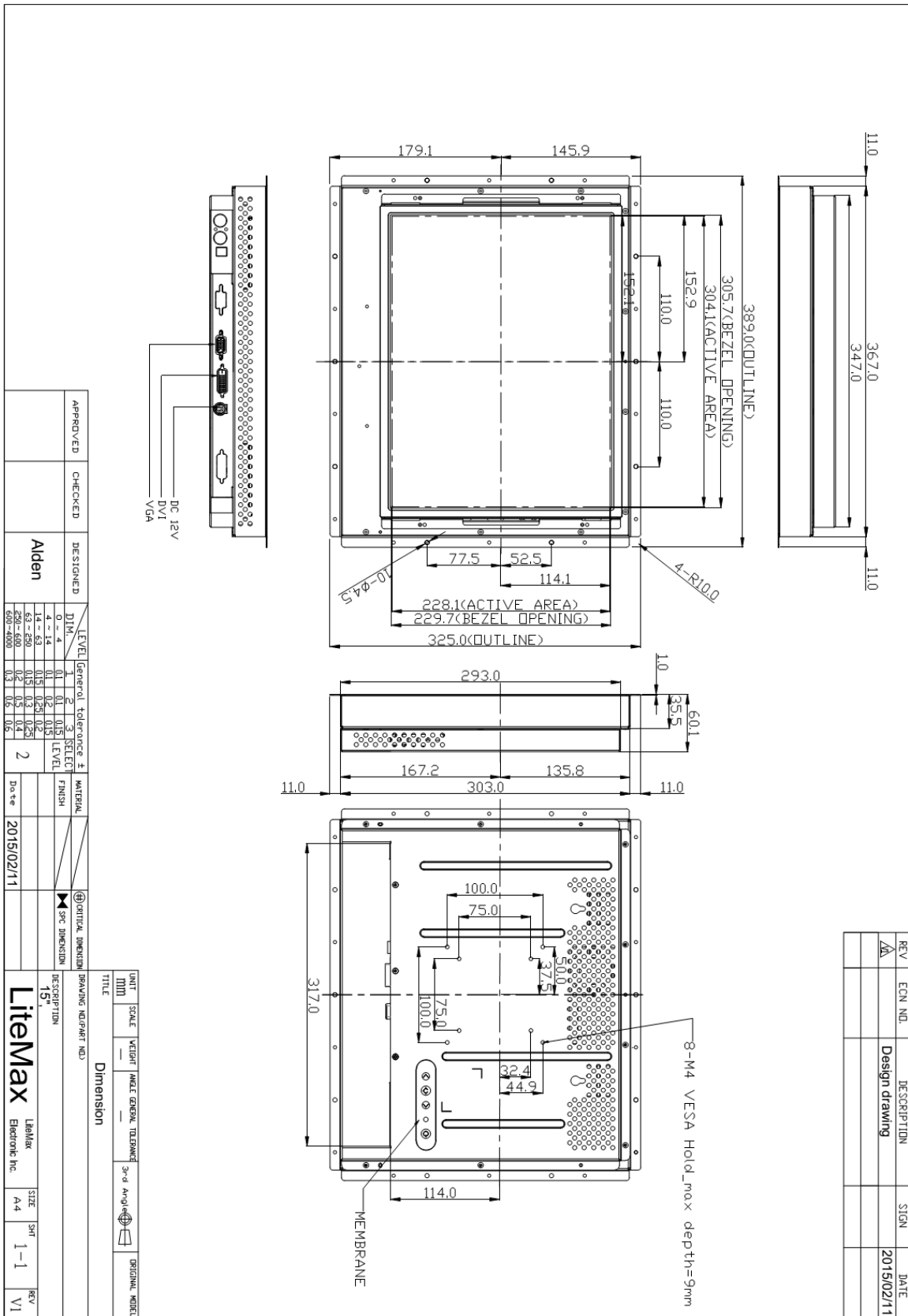
DLO = Panel+LED Driving Board+Control Board



Mechanical Drawing

Outline Dimensions

Unit:mm



APPROVED	CHECKED	DESIGNED	LEVEL		General	Tolerance	±	MATERIAL	FINISH	DESCRIPTION	DATE
		Alden	1	2	3	SELECT					2015/02/11
			0 ~ 4	0.1	0.15	LEVEL					
			4 ~ 63	0.15	0.25	LEVEL					
			63 ~ 250	0.15	0.3	LEVEL					
			250 ~ 600	0.2	0.5	LEVEL					
			600 ~ 1000	0.3	0.5	LEVEL					

UNIT	SCALE	WEIGHT	ANGLE	GENERAL TOLERANCE	3rd	ANGLE	ORIGINAL MODEL
mm							

TITLE	DRAWING NO./PART NO.
Dimension	

DESCRIPTION	15"
Label	LiteMax
Labeler	Electronic Inc.
SIZE	A4
SHT	1-1
REV	V1

REV	ECN NO.	DESCRIPTION	SIGN	DATE
Δ		Design drawing		2015/02/11



Ordering Information

Part Number	Description
DLO1506-SNB-I01	15",1000nits,XGA,LID15B,AD6038GD,O/B,DC12V,1in1,V01

Optional Accessories

Part Number	Description
840612031101	ADAPTER.12V.3.33A.40W.G99-KPL040F-N051.DC Plug 2.1*5.5,P
810618301010	CABLE.POWER.AC.1830mm USA type
810618301090	CABLE,POWER,AC,1830mm Europe type
810618301050	CABLE.POWER.AC.1830mm UK type
810618301170	CABLE.POWER,AC,1830mm Australia type
810618301030	CABLE.POWER.AC.1830mm Japan type