



DLO2208-I

22" Wide TFT LCD, LED Backlight 1600nits,WSXGA (1680x1050)

22" wide is a (WSXGA) LCD panel, built-in 1600 nits high bright for sunlight readable LCD display, high transmittance color filter, high transmission polarizing plates, Low Power Consumption, suitable for kiosk, advertising, POS, marine, transportation, gaming, studio display, gas pump.

Key Features

- Sunlight Readable
- LED Backlight
- High Shock & Vibration Resistance
- High Uniformity
- Low EMI Noise
- Wide Dimming
- Life Expectancy



Specifications

V1

Model No.	DLO2208-I
Description	22" Wide TFT LCD, LED Backlight 1600 nits, WSXGA
Display Area (mm)	473.76 (H) x 296.1(V)
Brightness	1,600 cd/m ²
Resolution	1680 x 1050 (WSXGA)
Contrast Ratio	1400 : 1
Pixel Pitch (mm)	0.282(H) x 0.282(V)
Viewing Angle	170°(H), 160°(V)
Display Colors	16.7M colors
Response Time (Typical)	5 ms
Sync	LVDS
Power Consumption	40W
Dimensions (mm)	545(W) x 370(H) x 60(D)mm
Weight (Net)	5.3 Kg
LED Driving Board	LID22
Control Board (Optional)	<input type="checkbox"/> AD2662GVA <input type="checkbox"/> AD2662GVADR
<input type="checkbox"/> AD2662GVA	VGA+S-Video+Composite+Audio
<input type="checkbox"/> AD2662GVADR	VGA+S-Video+Composite+Audio (Optional DVI / RS232)
F / R Control Button	<input type="checkbox"/> 5 Key
<input type="checkbox"/> 5 Key	Power Switch, Menu, Select (+,-), Auto
OSD Menu	Brightness, Contrast, H/V Position, Color, Phase, Clock...
Optional	<input type="checkbox"/> AOT <input type="checkbox"/> Touch Screen

Specifications are subject to change without notice.

All brands or product names are trademarks or registered trademarks of their respective companies.

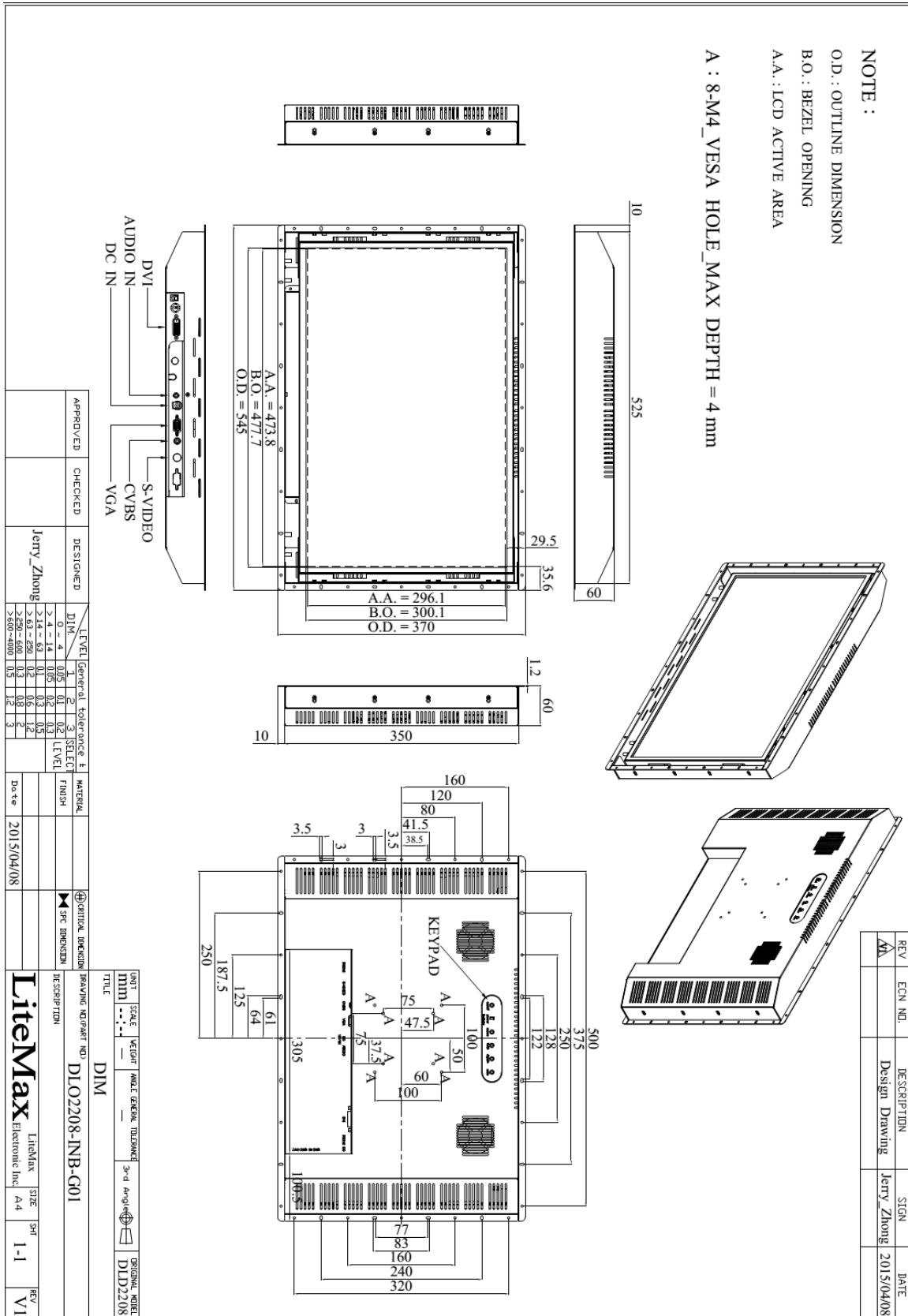
DLO = Panel + LED Driving Board + Control Board + Housing



Mechanical Drawing

Outline Dimensions

Unit:mm





Ordering Information

Model Name	Description
DLO2208-INB-G01	22",1600nits,WSXGA,LID22A,AD2662GVA+DVI,5key-pad,O/B,DC12V,V01

Optional Accessories

Part Number	Description
840612051210	ADAPTER,AC/DC,12V/5.4A,65W,Atech OEM A065112-TDx.4P SLIDING CAP,P
810618301010	CABLE.POWER.AC.1830mm USA type
810618301090	CABLE,POWER,AC,1830mm Europe type
810618301050	CABLE.POWER.AC.1830mm UK type
810618301170	CABLE.POWER,AC,1830mm Australia type
810618301030	CABLE.POWER.AC.1830mm Japan type