



DLO2325-E V1 MaxRGB

23" TFT LCD, LED Backlight 1000nits, MaxRGB, 1920x1080

The DLO2325-E is a 23 inch industrial grade sunlight readable and HCS (High Color Saturation) LCD, with high brightness 1,000 nits and high color saturation, it produce sharp images, crisp text and true colors. The Durapixel LED backlight technology ensures high reliability and low power consumption, suitable for outdoor application, kiosk, factory automation, military, transportation and gaming application.

Key Features

- High Brightness 1000 nits
- Sunlight Readable
- LED Backlight
- Low Power Consumption
- Wide Operation Temperature
- High Color Saturation
- BL MTBF: 100,000 hours



Specifications

Model Name	DLO2325-E V1 MaxRGB
Description	23" TFT LCD Monitor, LED Backlight 1,000nits, MaxRGB, 1920x1080
Screen Size	23"
Display Area (mm)	509.2(H) x 286.5(V) mm
Brightness	1000 cd/m ²
Resolution	1920 x 1080
Aspect Ratio	16 : 9
Contrast Ratio	1000 : 1
Pixel Pitch (mm)	0.2652(H) x 0.2652(V)
Pixel Pre Inch (PPI)	96
Viewing Angle	178°(H), 178°(V)
Color Saturation (NTSC)	94%
Display Colors	16.7M
Response Time (Typical)	14 ms
Video Interface	DVI-I , DP
Input Power	DC12V
Power Consumption	35 W
Dimensions (mm)	536.2x314.9x51.1 mm
Bezel Size(U/B/L/R)	12/12/11.2/11.2 mm
Weight (Net)	5 kg
Mounting	VESA 75x75 mm , 100x100 mm
OSD Key	4 Keys (Power Switch, Menu, +, -)
OSD Control	Brightness, Color, Contrast, Auto Turing, H/V Position...etc
Operating Temperature	0 °C ~ 50 °C
Storage Temperature	-20 °C ~ 60 °C
Product Approval	CE,FCC

DLO = Panel+ LED Driving Board + AD Control Board + Case

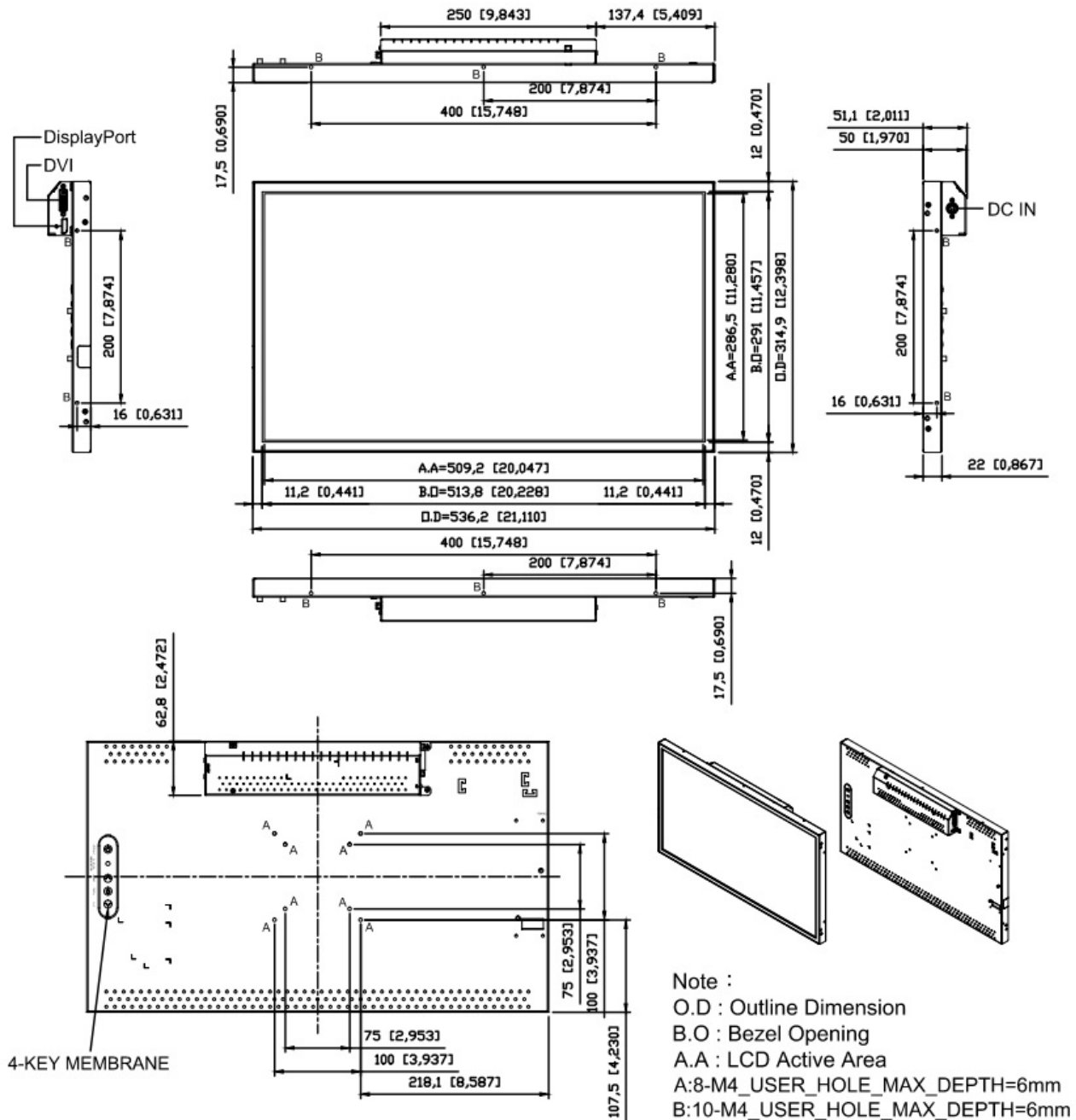
Specifications are subject to change without notice.
All brands or product names are trademarks or registered trademarks of their respective companies.



Mechanical Drawing

Outline Dimensions

Unit: mm





Ordering Information

Part Number	Description
DLO2325-ENW-I01	23",1000nits,FHD,MaxRGB.AD6038GDP+LID,O/B-4key.DC12V,V1

Optional Accessories

Part Number	Description
840612051210	ADAPTER,AC/DC,12V/5.4A,65W,Atech OEM A065112-TDx.4P SLIDING CAP,P
810618301010	CABLE.POWER.AC.1830mm USA type
810618301090	CABLE,POWER,AC,1830mm Europe type
810618301050	CABLE.POWER.AC.1830mm UK type
810618301170	CABLE.POWER,AC,1830mm Australia type
810618301031	CABLE.POWER.AC.1830mm Japan type

By Customer Request

Touch	Resistive (Single-Touch), SCT (Single-Touch), PCT (Multi-Touch)
AOT	Liquid Bonding, OCA Bonding
Glass	Tempered glass, AR coating.....
DC to DC	DC9~36V input