



## SLD 1055 V2 10.4" TFT LCD Monitor, LED Backlight 1000nits,XGA

SLD1055 V2 TFT LCD monitor, built-in 1000 nits high brightness for sunlight readable display. It offers the best visibility, performance and cost effective value. The high level of brightness together with the optimal contrast ratio renders high quality images and enhances legibility. With its fast response time and LED backlight technology, the monitor brings remarkable display quality and durability for your applications. Suitable for marine, military, medical, transportation, and industrial application.

### Key Features

- Sunlight Readable
- LED Backlight
- High Shock & Vibration Resistance
- Low Power Consumption
- Wide Temperature. Range (-20°C~60°C)
- High Uniformity (90%)
- Low EMI Noise
- Wide Dimming
- Life Expectancy (70,000hrs)

### Applications

Marline, Military,  
Medical, Transportation  
Industrial



## Specifications

V1

<b>Model No.</b>	<b>SLD1055 V2</b>
<b>Description</b>	10.4" TFT LCD Monitor, LED Backlight 800 nits, XGA
<b>Display Area (mm)</b>	210.4 x 157.8 mm
<b>Brightness</b>	1000 cd/m <sup>2</sup>
<b>Resolution</b>	1024 x 768 (XGA)
<b>Contrast Ratio</b>	800 : 1
<b>Pixel Pitch (mm)</b>	0.0685(H) x 0.2055(V)
<b>Viewing Angle</b>	+88°~88°(H), +88°~88°(V)
<b>Display Colors</b>	16.2M
<b>Response Time (Typical)</b>	40ms (Typical)
<b>Power Input</b>	DC-12V
<b>Power Consumption</b>	18W
<b>Dimensions (mm)</b>	311 x 202 x 57
<b>Weight (Net)</b>	2.5kg
<b>Control Board (Optional)</b>	<input type="checkbox"/> AD6038G <input type="checkbox"/> AD6038GA <input type="checkbox"/> AD6038GD <input type="checkbox"/> AD2662GDHVA
<input type="checkbox"/> AD6038G	VGA
<input type="checkbox"/> AD6038GA	VGA+Audio
<input type="checkbox"/> AD6038GD	VGA+DVI
<input type="checkbox"/> AD2662GDHVA	VGA+CVBS+S-Video+Audio (Optional DVI / Component /HDMI)
<b>F / R Control Button</b>	<input type="checkbox"/> 5 Key <input type="checkbox"/> 4 Key
<input type="checkbox"/> 5 Key	Power Switch, Menu, Select (+,-), Auto
<input type="checkbox"/> 4 Key	Power Switch, Menu, Select (+,-),
<b>OSD Menu</b>	Brightness, Contrast, H/V Position, Color, Phase, Clock...
<b>Optional</b>	<input type="checkbox"/> AOT <input type="checkbox"/> Touch Screen <input type="checkbox"/> Waterproof

*Specifications are subject to change without notice.*

*All brands or product names are trademarks or registered trademarks of their respective companies.*

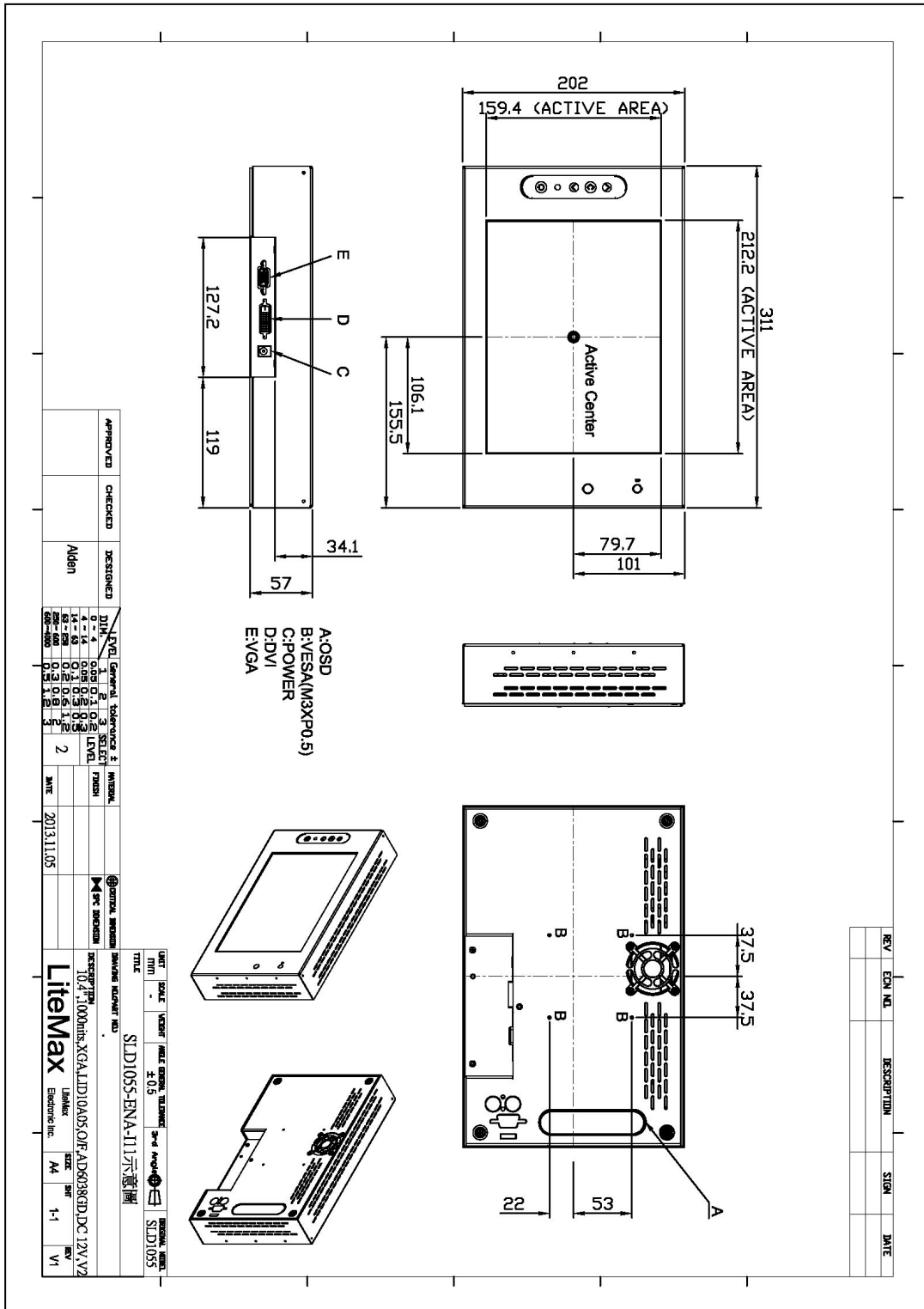
**SLD= Panel+LED Driving Board+Control Board**



## Mechanical Drawing

### Outline Dimensions

Unit:mm





### Ordering Information

Part Number	Description
SLD1055-ENA-I11	10.4",1000nits,XGA,LID10A05,AD6038GD,O/F, DC 12V input,V2

### Optional Accessories

Part Number	Description
840612051100	ADAPTER.12V.5A.60W.EA1050A,P
810618301010	CABLE.POWER.AC.1830mm USA type
810618301090	CABLE,POWER,AC,1830mm Europe type
810618301050	CABLE.POWER.AC.1830mm UK type
810618301170	CABLE.POWER,AC,1830mm Australia type
<u>810618301030</u>	CABLE.POWER.AC.1830mm Japan type