



SLD2137

21.5" Wide TFT LCD, LED Backlight 1400nits,FHD (1920x1080)

21.5" wide is a full high definition (FHD) LCD panel, built-in 1400 nits high bright for sunlight readable LCD display, high transmittance color filter, high transmission polarizing plates, Low Power Consumption, suitable for kiosk, advertising, POS, marine, transportation, gaming, studio display, gas pump.

Key Features

- Sunlight Readable
- LED Backlight
- High Shock & Vibration Resistance
- Low Power Consumption
- High Uniformity
- Low EMI Noise
- Wide Dimming
- Life Expectancy

Applications

- Marine
- Military
- Medical
- Transportation
- Industrial



Specifications

V1

Model No.	SLD2137
Description	21.5" Wide TFT LCD, LED Backlight 1400 nits, FHD
Display Area (mm)	476 (H) x 267.7(V)
Brightness	1,400 cd/m ²
Resolution	1920 x 1080 (FHD)
Contrast Ratio	1300 : 1
Pixel Pitch (mm)	0.08265(H) x 0.24795(V)
Viewing Angle	178°(H), 178°(V)
Display Colors	16.7M colors
Response Time (Typical)	5 ms
Sync	LVDS
Power Consumption	50W
Dimensions (mm)	545(W) x 370(H) x 61(D)mm
Weight (Net)	6.12 Kg
LED Driving Board	LID 21A
Control Board (Optional)	<input type="checkbox"/> AD2662GD <input type="checkbox"/> AD2662GDVAR
<input type="checkbox"/> AD2662GD	VGA+DVI
<input type="checkbox"/> AD2662GDVAR	VGA+DVI (Optional S-Video/ Component / Audio)
F / R Control Button	<input type="checkbox"/> 5 Key <input type="checkbox"/> 4 Key
<input type="checkbox"/> 5 Key	Power Switch, Menu, Select (+,-), Auto
<input type="checkbox"/> 4 Key	Power Switch, Menu, Select (+,-),
OSD Menu	Brightness, Contrast, H/V Position, Color, Phase, Clock...
Optional	<input type="checkbox"/> AOT <input type="checkbox"/> Touch Screen

Specifications are subject to change without notice.

All brands or product names are trademarks or registered trademarks of their respective companies.

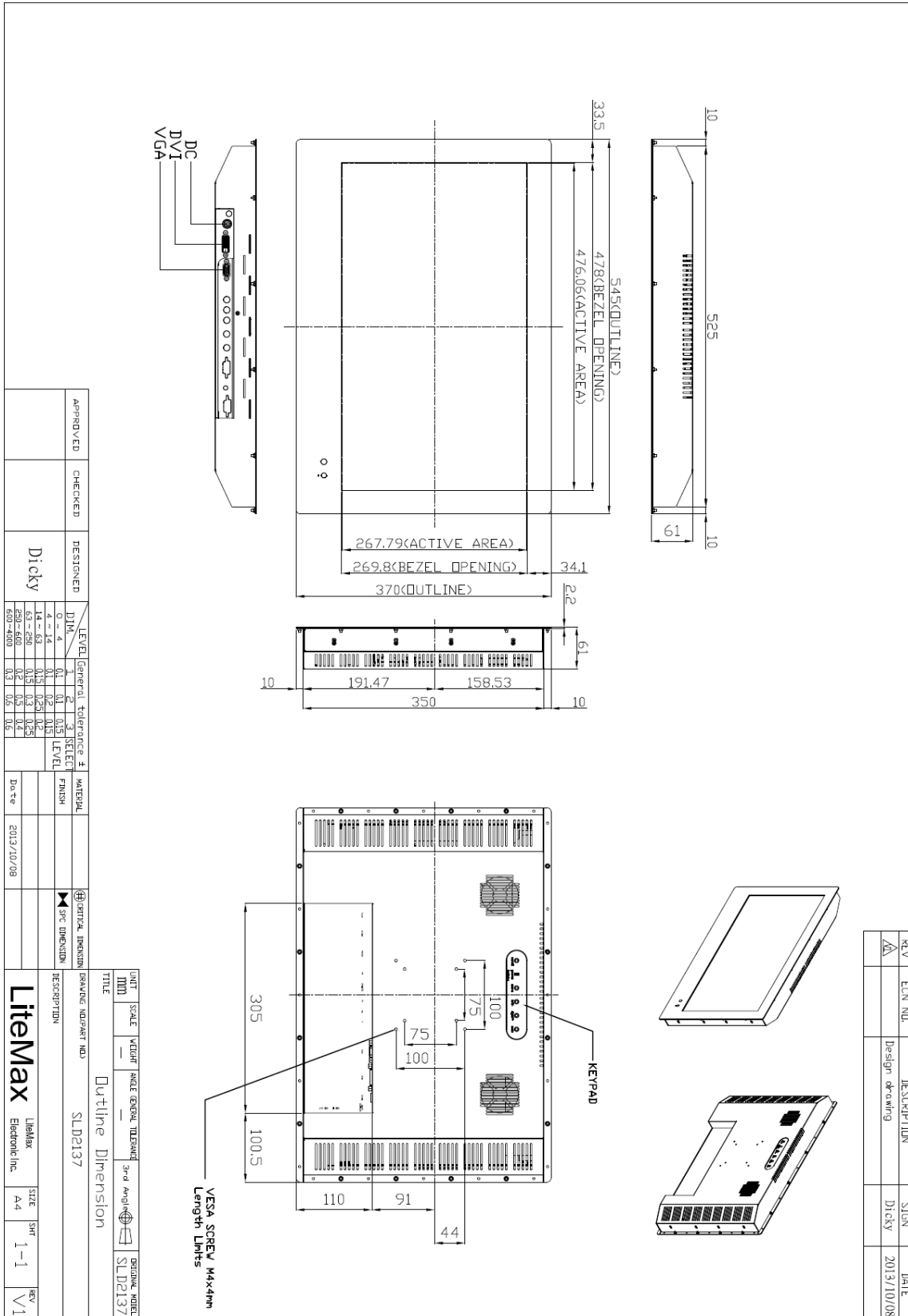
SLD = Panel+LED Driving Board+Control Board+Housing



Mechanical Drawing

Outline Dimensions

Unit:mm



APPROVED	CHECKED	DESIGNED	Dicky
		DIM.	LEVEL
		0 - 4	1
		4 - 14	2
		14 - 50	3
		50 - 600	4
		600 - 4000	5

LEVEL	General Tolerance	±	LEVEL
1	0.1	0.1	0.15
2	0.15	0.2	0.25
3	0.2	0.3	0.4
4	0.3	0.4	0.5
5	0.4	0.5	0.6

UNIT	SCALE	WEIGHT	ANGLE	EXTERNAL TOLERANCE	3rd Angle	ORIGINAL MODEL
MM						SLD2137
TITLE						
Outline Dimension						
DESCRIPTION						
SLD2137						
Lithemax Electronic Inc.						
SIZE	SHR		REV			
A4	1-1		V1			

REV	ECN NO.	DESCRIPTION	SIGN	DATE
A		Design drawing	Dicky	2013/10/08



Ordering Information

Model Name	Description
SLD2137-ENB-G01	21.5",1400nits,FHD,LID21A.AD2662GD,O/B(5key).DC12V input,V2

Optional Accessories

Part Number	Description
980000460010	SET.OTHER,ADAPTER REWORK.60W PAA060F WITH.POWER DIN 4pin lock,P
810618301010	CABLE.POWER.AC.1830mm USA type
810618301090	CABLE,POWER,AC,1830mm Europe type
810618301050	CABLE.POWER.AC.1830mm UK type
810618301170	CABLE.POWER,AC,1830mm Australia type
810618301030	CABLE..POWER.AC.1830mm Japan type