



**SLD2325-E**  
**23" Wide TFT LCD, LED Backlight 1000nits,FHD (1920x1080)**

SLD2325-E is a 23" wide open frame display, full high definition (FHD) LCD panel, Low power consumption is remarkable. The monitor brings outstanding display quality, and guaranteeing product life cycle longevity, stability, and reliability. Perfectly suitable for Kiosk, ATM, POS, gaming machine, and gas pump.

**Key Features**

- LED Backlight
- High Shock & Vibration Resistance
- Low Power Consumption
- Wide Viewing Angle
- High Uniformity
- Low EMI Noise

**Applications**

Kiosk  
 Gaming  
 POS



**Specifications**

V1

<b>Model No.</b>	<b>SLD2325-E</b>
<b>Description</b>	23" Wide TFT LCD, LED Backlight 1000 nits, FHD
<b>Active Display Area (mm)</b>	509.184 (H) x 286.416(V) mm
<b>Brightness</b>	1000 cd/m <sup>2</sup>
<b>Resolution</b>	1920 x 1080 (FHD)
<b>Contrast Ratio</b>	1000:1
<b>Pixel Pitch (mm)</b>	0.2652(H) x 0.2652(V) mm
<b>Viewing Angle</b>	R/L 178(Typ.), U/D 178(Typ.)
<b>Display Colors</b>	16.7M colors
<b>Response Time (Typical)</b>	14 ms
<b>Sync</b>	LVDS
<b>Power Consumption</b>	42W
<b>Outline Dimensions (mm)</b>	535.6 x 314.2 x 35.4 mm
<b>Weight (Net)</b>	4Kg
<b>LED Driving Board</b>	LID23A
<b>Control Board (Optional)</b>	<input type="checkbox"/> AD6038GD
	<input type="checkbox"/> AD2662GD
<b>F / R Control Button</b>	<input type="checkbox"/> 4 Key
	<input type="checkbox"/> 4 Key
<b>OSD Menu</b>	Brightness, Contrast, H/V Position, Color, Phase, Clock...
<b>Optional</b>	<input type="checkbox"/> AOT <input type="checkbox"/> Touch Screen

*Specifications are subject to change without notice.  
 All brands or product names are trademarks or registered trademarks of their respective companies.*

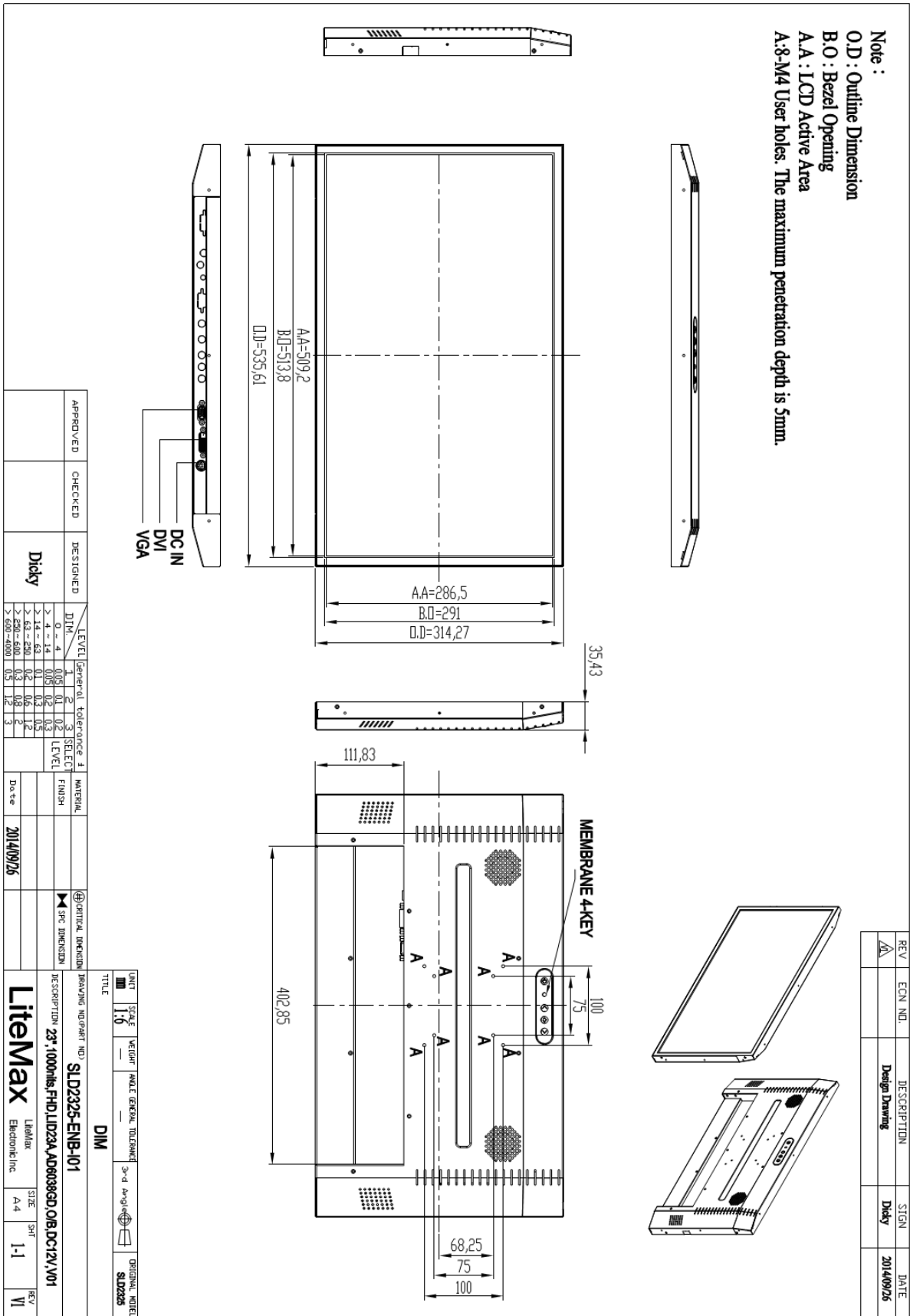
**SLD= Panel + LED Driving Board + Control Board + Housing**



# Mechanical Drawing

## Outline Dimensions

Unit:mm





### Ordering Information

Model Name	Description
SLD2325-ENB-I01	23",1000nits,FHD,LID23A,AD6038GD,O/B,DC12V,V01

### Optional Accessories

Part Number	Description
980000460010	SET.OTHER,ADAPTER REWORK.60W PAA060F WITH.POWER DIN 4pin lock,P
810618301010	CABLE.POWER.AC.1830mm USA type
810618301090	CABLE,POWER,AC,1830mm Europe type
810618301050	CABLE.POWER.AC.1830mm UK type
810618301170	CABLE.POWER,AC,1830mm Australia type
810618301031	CABLE.POWER.AC.1830mm Japan type