



SLO 1055 V2 10.4" Open Frame LCD Display, LED Backlight 1000nits,XGA

SLO 1055 V2 open frame LCD display, built-in 1000 nits high brightness for sunlight readable application. Features wide operating temperature, high brightness, AOT optical bonding, touch screen capable, and customized mechanical design; fulfill the demand for extreme environments. It offers the best visibility, performance and cost effective value. The high level of brightness together with fast response time and LED backlight technology, the monitor brings remarkable display quality. And guaranteeing product life cycle longevity, stability, and reliability. Perfectly suitable for kiosk, ATM, POS, marine, military, medical, transportation, and outdoor industrial application.

Key Features

- Sunlight Readable
- LED Backlight
- High Shock & Vibration Resistance
- Low Power Consumption
- Wide Temperature. Range (-20°C~60°C)
- High Uniformity (90%)
- Low EMI Noise
- Wide Dimming
- Life Expectancy (70,000hrs)

Applications

Marine, Military,
Medical, Transportation
Industrial



Specifications

V1

Model No.	SLO1055 V2
Description	10.4" Open Frame LCD Display, LED Backlight 1000 nits, XGA
Display Area (mm)	210.4 x 157.8 mm
Brightness	1000 cd/m ²
Resolution	1024 x 768 (XGA)
Contrast Ratio	800 : 1
Pixel Pitch (mm)	0.0685(H) x 0.2055(V)
Viewing Angle	+88°~-88°(H), +88°~-88°(V)
Display Colors	16.2M
Response Time (Typical)	40ms (Typical)
Power Input	DC-12V
Power Consumption	18W
Dimensions (mm)	340 x 228 x 57
Weight (Net)	2.7kg
Control Board (Optional)	<input type="checkbox"/> AD6038G <input type="checkbox"/> AD6038GA <input type="checkbox"/> AD6038GD <input type="checkbox"/> AD2662GDHVA
<input type="checkbox"/> AD6038G	VGA
<input type="checkbox"/> AD6038GA	VGA+Audio
<input type="checkbox"/> AD6038GD	VGA+DVI
<input type="checkbox"/> AD2662GDHVA	VGA+CVBS+S-Video+Audio (Optional DVI / Component /HDMI)
F / R Control Button	<input type="checkbox"/> 5 Key <input type="checkbox"/> 4 Key
<input type="checkbox"/> 5 Key	Power Switch, Menu, Select (+,-), Auto
<input type="checkbox"/> 4 Key	Power Switch, Menu, Select (+,-),
OSD Menu	Brightness, Contrast, H/V Position, Color, Phase, Clock...
Optional	<input type="checkbox"/> AOT <input type="checkbox"/> Touch Screen <input type="checkbox"/> Waterproof

Specifications are subject to change without notice.



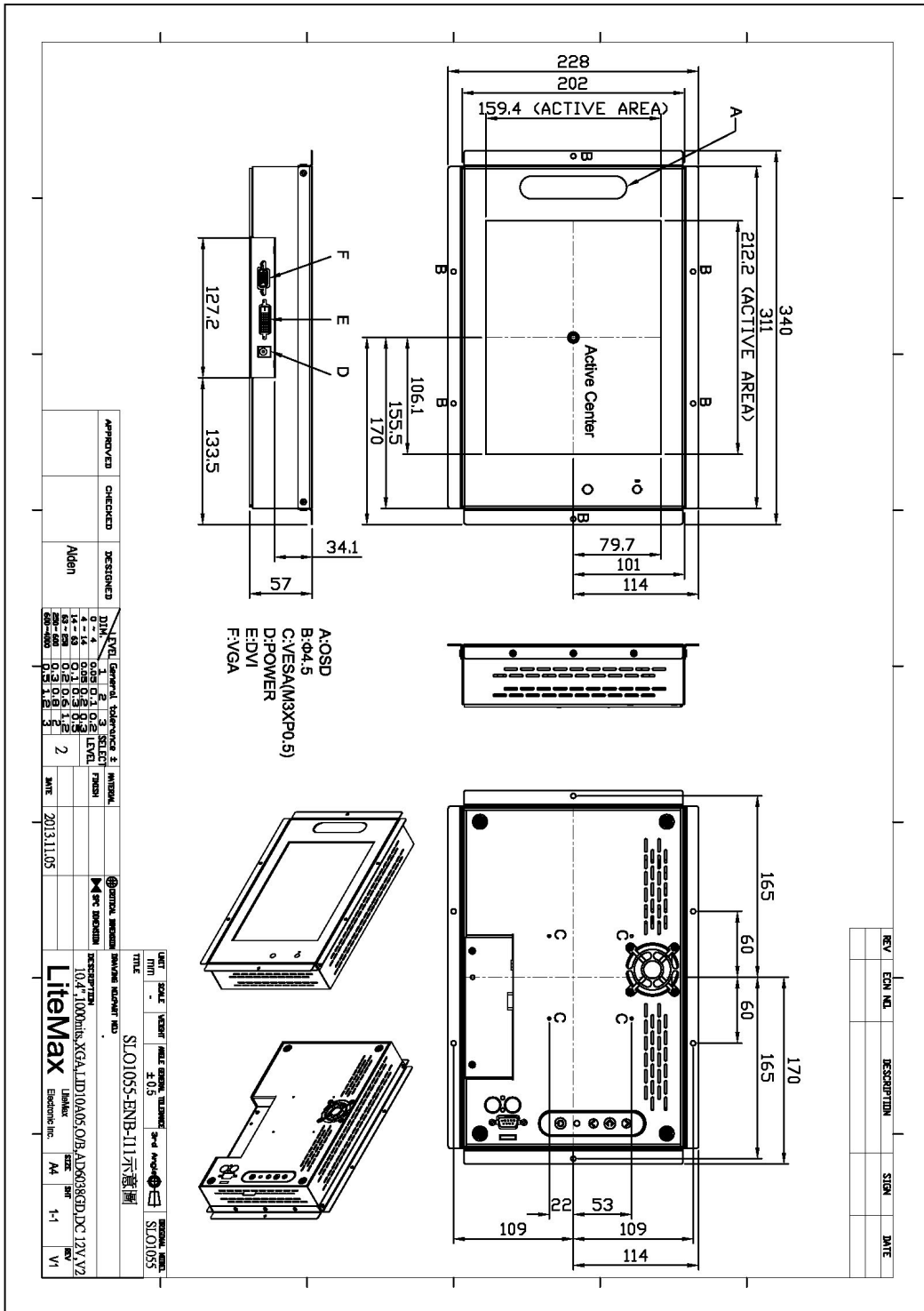
All brands or product names are trademarks or registered trademarks of their respective companies.

SLO= Panel+LED Driving Board+Control Board

Mechanical Drawing

Outline Dimensions

Unit:mm





Ordering Information

Part Number	Description
SLO1055-ENB-I11	10.4",1000nits,XGA,LID10A05,AD6038GD,O/B, DC 12V input,V2

Optional Accessories

Part Number	Description
840612051100	ADAPTER.12V.5A.60W.EA1050A,P
810618301010	CABLE.POWER.AC.1830mm USA type
810618301090	CABLE,POWER,AC,1830mm Europe type
810618301050	CABLE.POWER.AC.1830mm UK type
810618301170	CABLE.POWER,AC,1830mm Australia type
<u>810618301030</u>	CABLE.POWER.AC.1830mm Japan type