



SLO1085

10.4" TFT LCD, LED Backlight 1000nits,XGA

10.4" TFT LCD panel, built-in 1000 nits high bright for sunlight readable LCD display, high transmittance color filter, high transmission polarizing plates, Low Power Consumption, suitable for kiosk, advertising, POS, marine, transportation, gaming, studio display, gas pump.

Key Features

- Sunlight Readable
- LED Backlight
- High Shock & Vibration Resistance
- Low Power Consumption
- Wide Operation Temperature
- High Uniformity
- Low EMI Noise
- Wide Dimming
- Life Expectancy



Specifications

V1

Model No.	SLO1085
Description	10.4" TFT LCD, LED Backlight 1000 nits, XGA
Display Area (mm)	211.2 (H) x 158.4(V) mm
Brightness	1000 cd/m ²
Resolution	1024 x 768 (XGA)
Contrast Ratio	600 : 1
Pixel Pitch (mm)	0.20625(H) x 0.20625(V)
Viewing Angle	140°(H), 120°(V)
Display Colors	262K
Response Time (Typical)	25ms (Typical)
Sync	LVDS
Power Consumption	15W
Dimensions (mm)	279(W) x 204(H) x 45(D)mm
Weight (Net)	1.3Kg
LED Driving Board	LID10B
Control Board (Optional)	<input type="checkbox"/> AD6038GD
<input type="checkbox"/> AD6038GD	VGA+DVI
F / R Control Button	<input type="checkbox"/> 4 Key
<input type="checkbox"/> 4 Key	Power Switch, Menu, Select (+,-),
OSD Menu	Brightness, Contrast, H/V Position, Color, Phase, Clock...
Optional	<input type="checkbox"/> AOT <input type="checkbox"/> Touch Screen

Specifications are subject to change without notice.

All brands or product names are trademarks or registered trademarks of their respective companies.

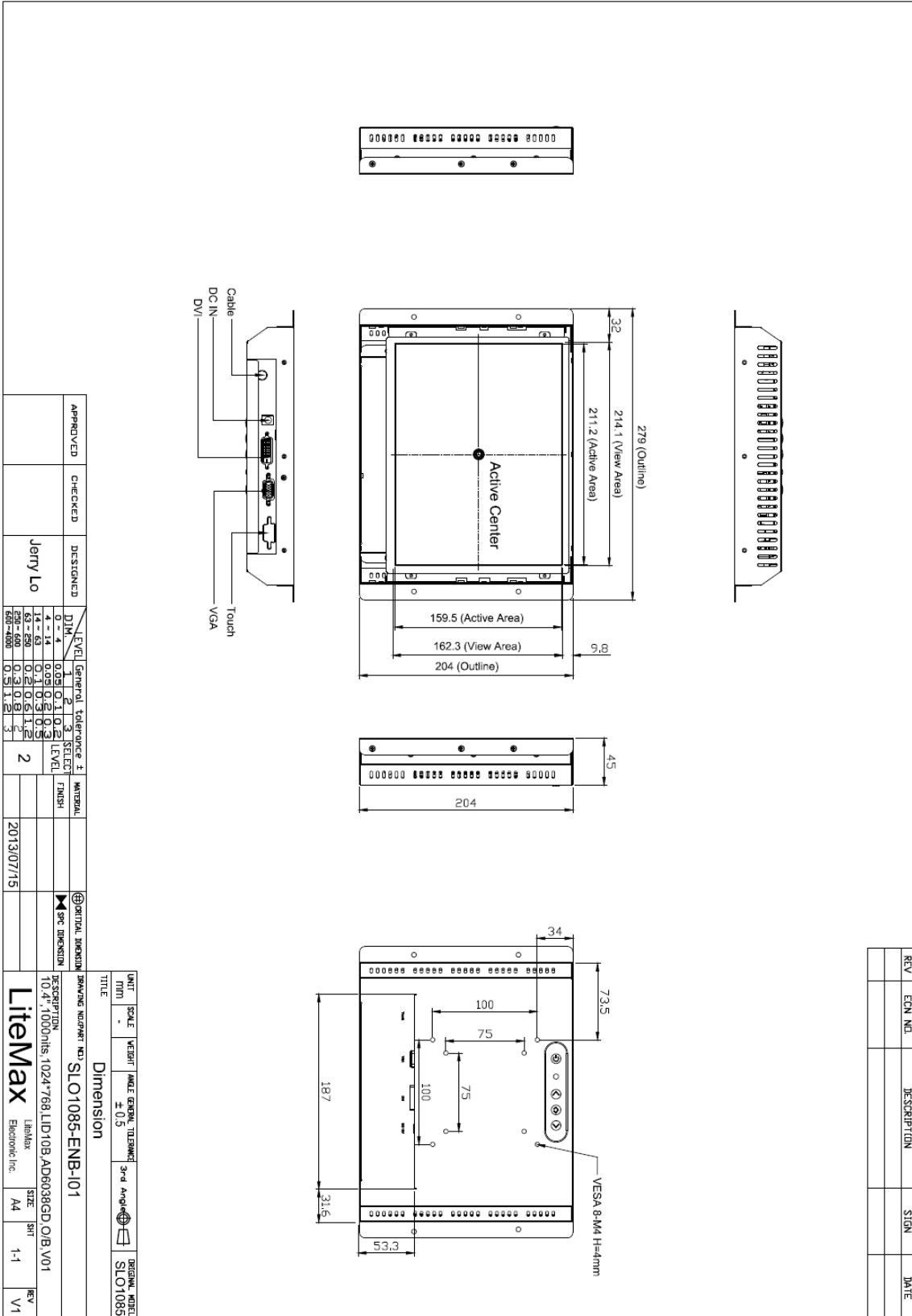
SLO= Panel+LED Driving Board+Control Board



Mechanical Drawing

Outline Dimensions

Unit:mm



REV	EQ. NO.	DESCRIPTION	SIGN	DATE

APPROVED	CHECKED	DESIGNED	Jerry Lo
LEVEL		General tolerance	
0-4	1	2	3
0.1	0.05	0.1	0.2
0.2	0.1	0.2	0.3
0.3	0.15	0.3	0.4
0.4	0.2	0.4	0.5
0.5	0.25	0.5	0.6
0.6	0.3	0.6	0.7
0.7	0.35	0.7	0.8
0.8	0.4	0.8	0.9
0.9	0.45	0.9	1.0
1.0	0.5	1.0	1.1
1.1	0.55	1.1	1.2
1.2	0.6	1.2	1.3
1.3	0.65	1.3	1.4
1.4	0.7	1.4	1.5
1.5	0.75	1.5	1.6
1.6	0.8	1.6	1.7
1.7	0.85	1.7	1.8
1.8	0.9	1.8	1.9
1.9	0.95	1.9	2.0
2.0	1.0	2.0	2.1
2.1	1.05	2.1	2.2
2.2	1.1	2.2	2.3
2.3	1.15	2.3	2.4
2.4	1.2	2.4	2.5
2.5	1.25	2.5	2.6
2.6	1.3	2.6	2.7
2.7	1.35	2.7	2.8
2.8	1.4	2.8	2.9
2.9	1.45	2.9	3.0
3.0	1.5	3.0	3.1
3.1	1.55	3.1	3.2
3.2	1.6	3.2	3.3
3.3	1.65	3.3	3.4
3.4	1.7	3.4	3.5
3.5	1.75	3.5	3.6
3.6	1.8	3.6	3.7
3.7	1.85	3.7	3.8
3.8	1.9	3.8	3.9
3.9	1.95	3.9	4.0
4.0	2.0	4.0	4.1
4.1	2.05	4.1	4.2
4.2	2.1	4.2	4.3
4.3	2.15	4.3	4.4
4.4	2.2	4.4	4.5
4.5	2.25	4.5	4.6
4.6	2.3	4.6	4.7
4.7	2.35	4.7	4.8
4.8	2.4	4.8	4.9
4.9	2.45	4.9	5.0
5.0	2.5	5.0	5.1
5.1	2.55	5.1	5.2
5.2	2.6	5.2	5.3
5.3	2.65	5.3	5.4
5.4	2.7	5.4	5.5
5.5	2.75	5.5	5.6
5.6	2.8	5.6	5.7
5.7	2.85	5.7	5.8
5.8	2.9	5.8	5.9
5.9	2.95	5.9	6.0
6.0	3.0	6.0	6.1
6.1	3.05	6.1	6.2
6.2	3.1	6.2	6.3
6.3	3.15	6.3	6.4
6.4	3.2	6.4	6.5
6.5	3.25	6.5	6.6
6.6	3.3	6.6	6.7
6.7	3.35	6.7	6.8
6.8	3.4	6.8	6.9
6.9	3.45	6.9	7.0
7.0	3.5	7.0	7.1
7.1	3.55	7.1	7.2
7.2	3.6	7.2	7.3
7.3	3.65	7.3	7.4
7.4	3.7	7.4	7.5
7.5	3.75	7.5	7.6
7.6	3.8	7.6	7.7
7.7	3.85	7.7	7.8
7.8	3.9	7.8	7.9
7.9	3.95	7.9	8.0
8.0	4.0	8.0	8.1
8.1	4.05	8.1	8.2
8.2	4.1	8.2	8.3
8.3	4.15	8.3	8.4
8.4	4.2	8.4	8.5
8.5	4.25	8.5	8.6
8.6	4.3	8.6	8.7
8.7	4.35	8.7	8.8
8.8	4.4	8.8	8.9
8.9	4.45	8.9	9.0
9.0	4.5	9.0	9.1
9.1	4.55	9.1	9.2
9.2	4.6	9.2	9.3
9.3	4.65	9.3	9.4
9.4	4.7	9.4	9.5
9.5	4.75	9.5	9.6
9.6	4.8	9.6	9.7
9.7	4.85	9.7	9.8
9.8	4.9	9.8	9.9
9.9	4.95	9.9	10.0

UNIT	SCALE	WEIGHT	GRADE	GENERAL TOLERANCE	3rd Angle	ORIGINAL MODEL
MM	-	-	-	± 0.5		SLO1085
TITLE						
Dimension						
DRAWING NUMBER NO.3 SLO1085-ENB-101						
DESCRIPTION						
10.4" 1000nits 1024*768 LID10B AD6038GD O/B V01						
LitexMax						
LitexMax Electronic Inc.						
SIZE	A4	REV	1-1	REV		
SHEET	1-1	V1				



Ordering Information

Model Name	Description
SLO1085-ENB-I01	10.4",1000nits,1024*768,LID10B,AD6038GD,O/B,V1

Optional Accessories

Part Number	Description
840612051100	ADAPTER.12V.5A.60W.EA1050A,P
810618301010	CABLE.POWER.AC.1830mm USA type
810618301090	CABLE,POWER,AC,1830mm Europe type
810618301050	CABLE.POWER.AC.1830mm UK type
810618301170	CABLE.POWER,AC,1830mm Australia type
810618301030	CABLE.POWER.AC.1830mm Japan type