



SLO1568 V3 15" TFT LCD Monitor, LED Backlight 1,600nits,XGA(1024x768)

SLO1568 TFT LCD monitor, built-in 1600 nits high brightness for sunlight readable display. It offers the best visibility, performance and cost effective value. The high level of brightness together with the optimal contrast ratio renders high quality images and enhances legibility. With its fast response time and LED backlight technology, the monitor brings remarkable display quality and durability for your applications. Suitable for marine, military, medical, transportation, and industrial application.

Key Features

- Brightness: 1600nits
- LED Backlight
- XGA(1024x768) High Definition
- High Shock & Vibration Resistance
- Low Power Consumption
- High Uniformity
- Low EMI Noise
- Wide Dimming



Specifications

V1

Model No.	SLO1568 V3
Description	15" TFT LCD Monitor, LED Backlight 1,600nits,XGA(1024x768)
Display Area (mm)	304.13(H) x 228.1(V) mm
Brightness	1600 cd/m ²
Resolution	1024x768 (XGA)
Contrast Ratio	1000 : 1
Pixel Pitch (mm)	0.297(H) x 0.297(V)
Pixel Pre Inch (PPI)	85
Viewing Angle	+80°~80°(H), +80°~80°(V)
Color Saturation (NTSC)	69%
Display Colors	16.7M
Response Time (Typical)	8ms
Operating Temperature	-20°C ~ 70°C
Storage Temperature	-30°C ~ 80°C
Power Consumption	17W
Dimensions (mm)	350.5x253.5x30.6mm
Weight (Net)	1.3kg
LED Driving Board	LID15A
Control Board (Optional)	<input type="checkbox"/> AD6038GA <input type="checkbox"/> AD6038GD
<input type="checkbox"/> AD6038GA	VGA+Audio
<input type="checkbox"/> AD6038GD	VGA+DVI
F / R Control Button	<input type="checkbox"/> 4 Key
<input type="checkbox"/> 4 Key	Power Switch, Menu, Select (+,-),
OSD Menu	Brightness, Contrast, H/V Position, Color, Phase, Clock...
Optional	<input type="checkbox"/> AOT <input type="checkbox"/> Touch Screen

Specifications are subject to change without notice.

All brands or product names are trademarks or registered trademarks of their respective companies.

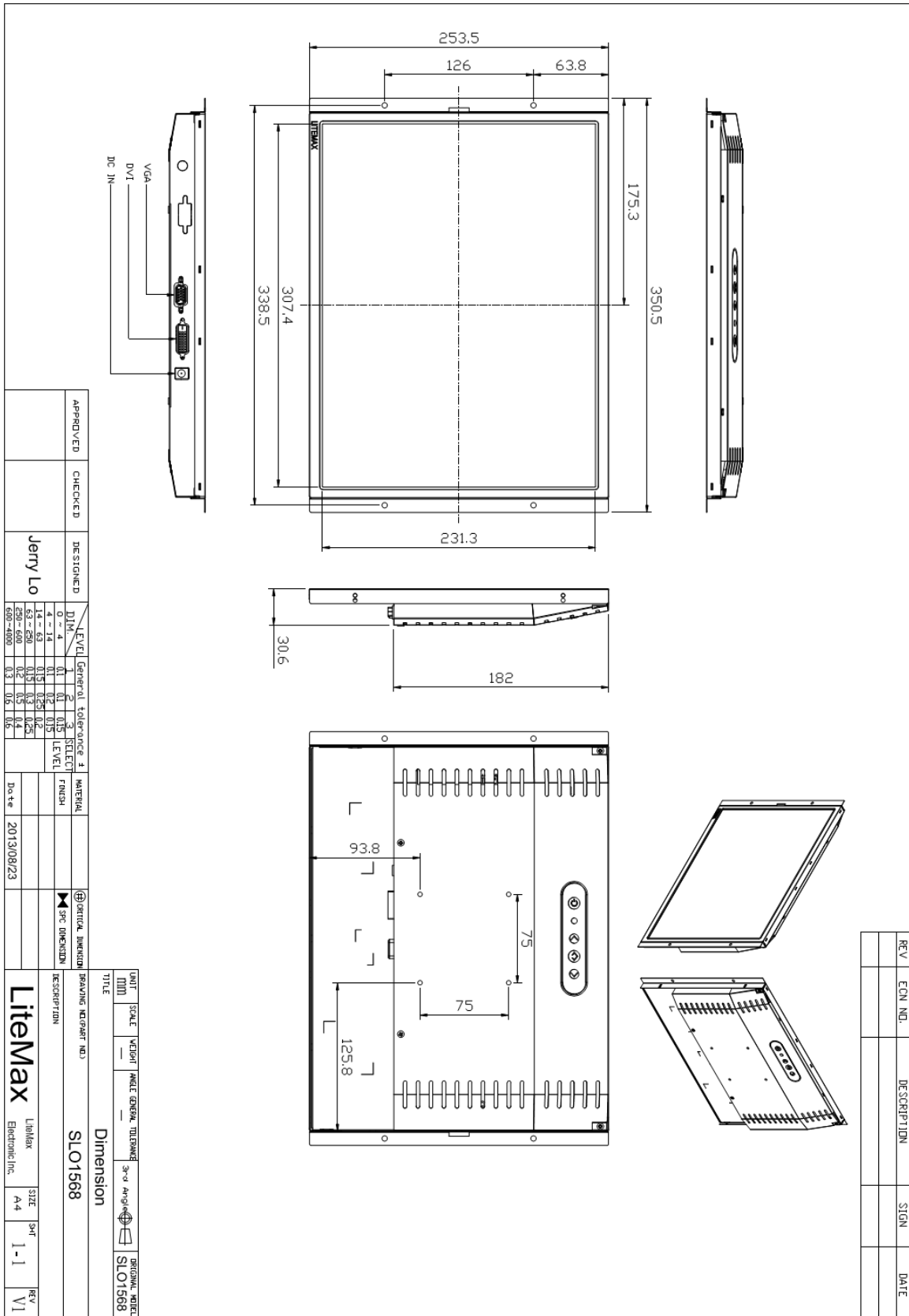
SLO = Panel+LED Driving Board+Control Board+Housing



Mechanical Drawing

Outline Dimensions

Unit:mm





Ordering Information

Part Number	Description
SLO1568-ENB-I21	15",1600nits,XGA,LID15A,AD6038GA,O/B,DC12V,3in1,V3
SLO1568-ENB-I22	15",1600nits,XGA,LID15A,AD6038GA,O/B,DC12V,5in1,V3
SLO1568-ENB-I23	15",1600nits,XGA,LID15A,AD6038GD,O/B,DC12V,3in1,V3
SLO1568-ENB-I24	15",1600nits,XGA,LID15A,AD6038GD,O/B,DC12V,5in1,V3

Optional Accessories

Part Number	Description
840612031101	ADAPTER.12V.3.33A.40W.G99-KPL040F-N051.DC Plug 2.1*5.5,P
810618301010	CABLE.POWER.AC.1830mm USA type
810618301090	CABLE,POWER,AC,1830mm Europe type
810618301050	CABLE.POWER.AC.1830mm UK type
810618301170	CABLE.POWER,AC,1830mm Australia type
810618301031	CABLE.POWER.AC.1830mm Japan type