

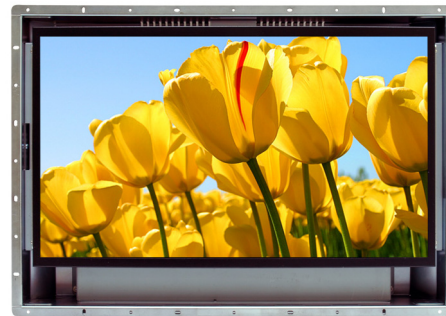


SLO1825 V2
18.5" Wide TFT LCD, LED Backlight 1000nits, WXGA

18.5" Wide open frame TFT LCD panel, built-in 1000 nits high bright for sunlight readable LCD display, high transmittance color filter, high transmission polarizing plates, Low Power Consumption, suitable for kiosk, advertising, POS, transportation, gaming, studio display, gas pump.

Key Features

- Sunlight Readable
- LED Backlight
- High Shock & Vibration Resistance
- Low Power Consumption
- High Uniformity
- Low EMI Noise
- Wide Dimming



Specifications

V1

Model No.	SLO1825 V2
Description	18.5" Wide open frame TFT LCD, LED Backlight 1000nits, WXGA
Display Area (mm)	409.8(h) x 230.4(v) mm
Brightness	1000 cd/m ²
Resolution	1366x768 (WXGA)
Contrast Ratio	1250 : 1
Pixel Pitch (mm)	0.3(H) x 0.3(V)
Viewing Angle	+85°~ -85°(H), +80°~ -80°(V)
Display Colors	16.7M
Response Time (Typical)	5ms
Sync	LVDS
Power Consumption	21W
Dimensions (mm)	475x330x60
Weight (Net)	4Kg
LED Driving Board	LID 18A
Control Board (Optional)	<input type="checkbox"/> AD2662GD <input type="checkbox"/> AD2662GDVAR
<input type="checkbox"/> AD2662GD	VGA+DVI
<input type="checkbox"/> AD2662GDVAR	VGA+DVI +CVBS+S-Video+Audio+RS232
F / R Control Button	<input type="checkbox"/> 5 Key <input type="checkbox"/> 4 Key
<input type="checkbox"/> 5 Key	Power Switch, Menu, Select (+,-), Auto
<input type="checkbox"/> 4 Key	Power Switch, Menu, Select (+,-),
OSD Menu	Brightness, Contrast, H/V Position, Color, Phase, Clock...
Optional	<input type="checkbox"/> AOT <input type="checkbox"/> Touch Screen

*Specifications are subject to change without notice.
 All brands or product names are trademarks or registered trademarks of their respective companies.*

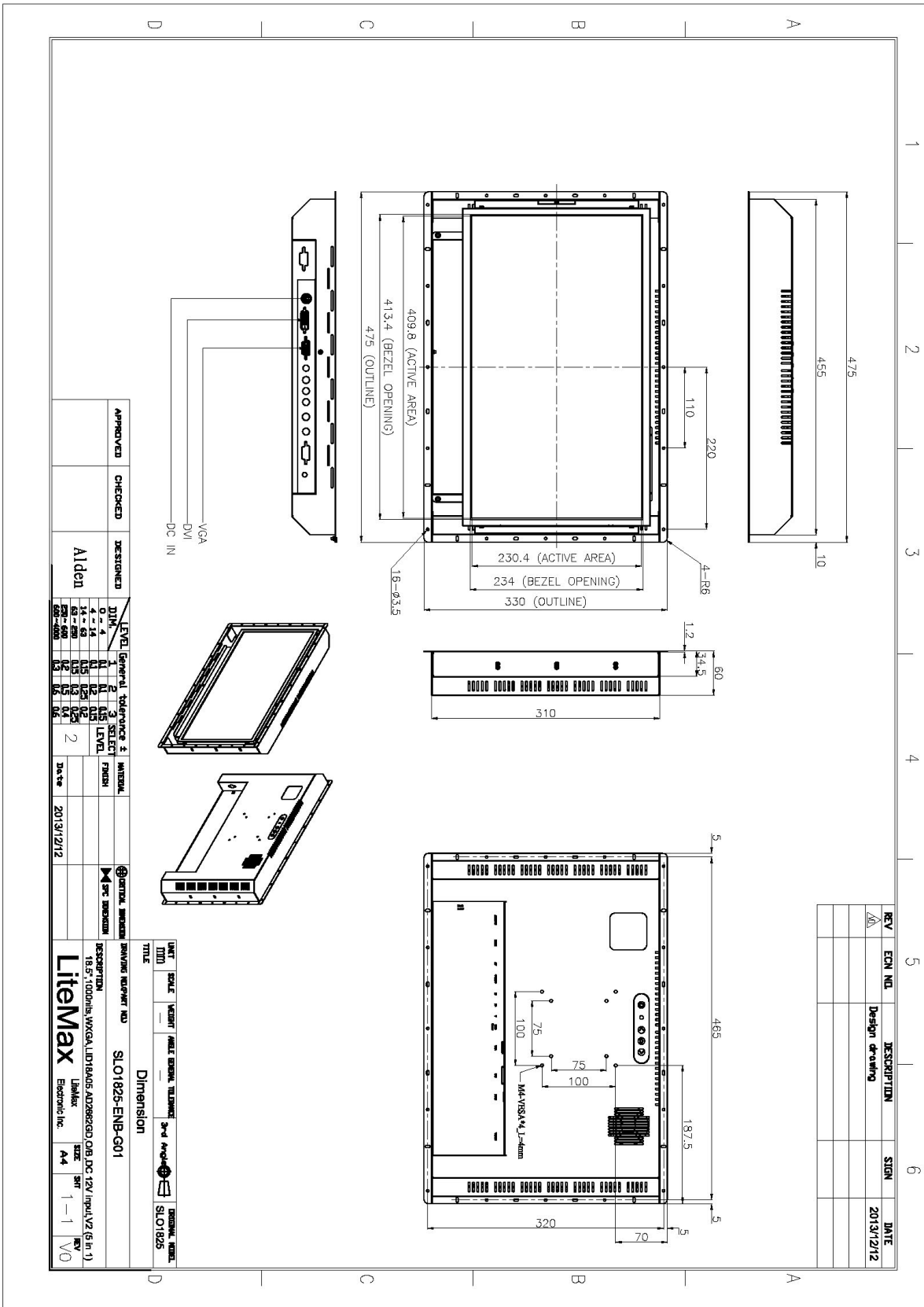
SLO = Panel+LED Driving Board+Control Board+Open Frame Housing



Mechanical Drawing

Outline Dimensions

Unit:mm



APPROVED	CHECKED	DESIGNED
		Alden

LEVEL	General	tolerance	±	MATERIAL
1	1	0.15	LEVEL	
2	2	0.15	LEVEL	
3	3	0.15	LEVEL	
4	4	0.15	LEVEL	
5	5	0.15	LEVEL	
6	6	0.15	LEVEL	
7	7	0.15	LEVEL	
8	8	0.15	LEVEL	
9	9	0.15	LEVEL	
10	10	0.15	LEVEL	
11	11	0.15	LEVEL	
12	12	0.15	LEVEL	
13	13	0.15	LEVEL	
14	14	0.15	LEVEL	
15	15	0.15	LEVEL	
16	16	0.15	LEVEL	
17	17	0.15	LEVEL	
18	18	0.15	LEVEL	
19	19	0.15	LEVEL	
20	20	0.15	LEVEL	

DATE	2013/12/12
DESCRIPTION	18.5" 1000x1600mm WXGA LUT18A05 ADDRESS/DCI DDC 22V INPUT V2 (6 in 1)
REV	VO
DATE	2013/12/12
DESCRIPTION	18.5" 1000x1600mm WXGA LUT18A05 ADDRESS/DCI DDC 22V INPUT V2 (6 in 1)
REV	VO

UNIT	SCALE	REVISION	DATE	REVISION	DATE
MM	1:1				

TITLE	Dimension
DATE	2013/12/12
DESCRIPTION	18.5" 1000x1600mm WXGA LUT18A05 ADDRESS/DCI DDC 22V INPUT V2 (6 in 1)
REV	VO

DATE	2013/12/12
DESCRIPTION	18.5" 1000x1600mm WXGA LUT18A05 ADDRESS/DCI DDC 22V INPUT V2 (6 in 1)
REV	VO

DATE	2013/12/12
DESCRIPTION	18.5" 1000x1600mm WXGA LUT18A05 ADDRESS/DCI DDC 22V INPUT V2 (6 in 1)
REV	VO

DATE	2013/12/12
DESCRIPTION	18.5" 1000x1600mm WXGA LUT18A05 ADDRESS/DCI DDC 22V INPUT V2 (6 in 1)
REV	VO

DATE	2013/12/12
DESCRIPTION	18.5" 1000x1600mm WXGA LUT18A05 ADDRESS/DCI DDC 22V INPUT V2 (6 in 1)
REV	VO

DATE	2013/12/12
DESCRIPTION	18.5" 1000x1600mm WXGA LUT18A05 ADDRESS/DCI DDC 22V INPUT V2 (6 in 1)
REV	VO

DATE	2013/12/12
DESCRIPTION	18.5" 1000x1600mm WXGA LUT18A05 ADDRESS/DCI DDC 22V INPUT V2 (6 in 1)
REV	VO

DATE	2013/12/12
DESCRIPTION	18.5" 1000x1600mm WXGA LUT18A05 ADDRESS/DCI DDC 22V INPUT V2 (6 in 1)
REV	VO

DATE	2013/12/12
DESCRIPTION	18.5" 1000x1600mm WXGA LUT18A05 ADDRESS/DCI DDC 22V INPUT V2 (6 in 1)
REV	VO

DATE	2013/12/12
DESCRIPTION	18.5" 1000x1600mm WXGA LUT18A05 ADDRESS/DCI DDC 22V INPUT V2 (6 in 1)
REV	VO

DATE	2013/12/12
DESCRIPTION	18.5" 1000x1600mm WXGA LUT18A05 ADDRESS/DCI DDC 22V INPUT V2 (6 in 1)
REV	VO

DATE	2013/12/12
DESCRIPTION	18.5" 1000x1600mm WXGA LUT18A05 ADDRESS/DCI DDC 22V INPUT V2 (6 in 1)
REV	VO

DATE	2013/12/12
DESCRIPTION	18.5" 1000x1600mm WXGA LUT18A05 ADDRESS/DCI DDC 22V INPUT V2 (6 in 1)
REV	VO

DATE	2013/12/12
DESCRIPTION	18.5" 1000x1600mm WXGA LUT18A05 ADDRESS/DCI DDC 22V INPUT V2 (6 in 1)
REV	VO

DATE	2013/12/12
DESCRIPTION	18.5" 1000x1600mm WXGA LUT18A05 ADDRESS/DCI DDC 22V INPUT V2 (6 in 1)
REV	VO



Ordering Information

Part Number	Description
SLO1825-ENB-G11	18.5",1000nits,WXGA,LID18A,AD2662GD,O/B,DC 12V input,V2

Optional Accessories

Part Number	Description
840612051210	ADAPTER,AC/DC,12V/5.4A,65W,Atech OEM A065112-TDx.4P SLIDING CAP,P
810618301010	CABLE.POWER.AC.1830mm USA type
810618301090	CABLE,POWER,AC,1830mm Europe type
810618301050	CABLE.POWER.AC.1830mm UK type
810618301170	CABLE.POWER,AC,1830mm Australia type
810618301030	CABLE.POWER.AC.1830mm Japan type