



SLO 1954 V2

19" TFT LCD Open Frame Monitor, LED Backlight 1000nits,SXGA

SLO1954 V2 TFT LCD monitor, built-in 1000 nits high brightness for sunlight readable display. It offers the best visibility, performance and cost effective value. The high level of brightness together with the optimal contrast ratio renders high quality images and enhances legibility. With its fast response time and LED backlight technology, the monitor brings remarkable display quality and durability for your applications. Suitable for marine, military, medical, transportation, and industrial application.

Key Features

- Sunlight Readable
- LED Backlight
- High Shock & Vibration Resistance
- Low Power Consumption
- High Uniformity (90%)
- Low EMI Noise
- Wide Dimming
- Life Expectancy (70,000hrs)

Applications

Marline, Military,
Medical, Transportation
Industrial



Specifications

V1

Model No.	SLO1954 V2
Description	19" TFT LCD Monitor, LED Backlight 1000 nits, SXGA
Display Area (mm)	376.32 x 301.06 mm
Brightness	1000 cd/m ²
Resolution	1280x1024 (SXGA)
Contrast Ratio	1000 : 1
Pixel Pitch (mm)	0.294(H) x 0.294(V)
Viewing Angle	+85°~ -85°(H), +80°~ -80°(V)
Display Colors	16.7M
Response Time (Typical)	5ms
Power Input	DC-12V
Power Consumption	25W
Dimensions (mm)	451 x 361.1x 58 (SLO1954-ENB-I11 & I12) 451 x 343.08 x 58 (SLO1954-ENB-I13)
Weight (Net)	5.5 Kg
Control Board (Optional)	<input type="checkbox"/> AD6038GA <input type="checkbox"/> AD6038GD <input type="checkbox"/> AD2662GDHVA <input type="checkbox"/> AD2662GDVAR
<input type="checkbox"/> AD6038GA	VGA+Audio
<input type="checkbox"/> AD6038GD	VGA+DVI
<input type="checkbox"/> AD2662GDHVA	VGA+CVBS+S-Video+Audio (Optional DVI / Component)
<input type="checkbox"/> AD2662GDVAR	VGA+DVI (Optional S-Video/ Component / Audio)
F / R Control Button	<input type="checkbox"/> 5 Key <input type="checkbox"/> 4 Key
<input type="checkbox"/> 5 Key	Power Switch, Menu, Select (+,-), Auto
<input type="checkbox"/> 4 Key	Power Switch, Menu, Select (+,-),
OSD Menu	Brightness, Contrast, H/V Position, Color, Phase, Clock...
Optional	<input type="checkbox"/> AOT <input type="checkbox"/> Touch Screen <input type="checkbox"/> Waterproof

Specifications are subject to change without notice.

All brands or product names are trademarks or registered trademarks of their respective companies.

SLO= Panel+LED Driving Board+Control Board

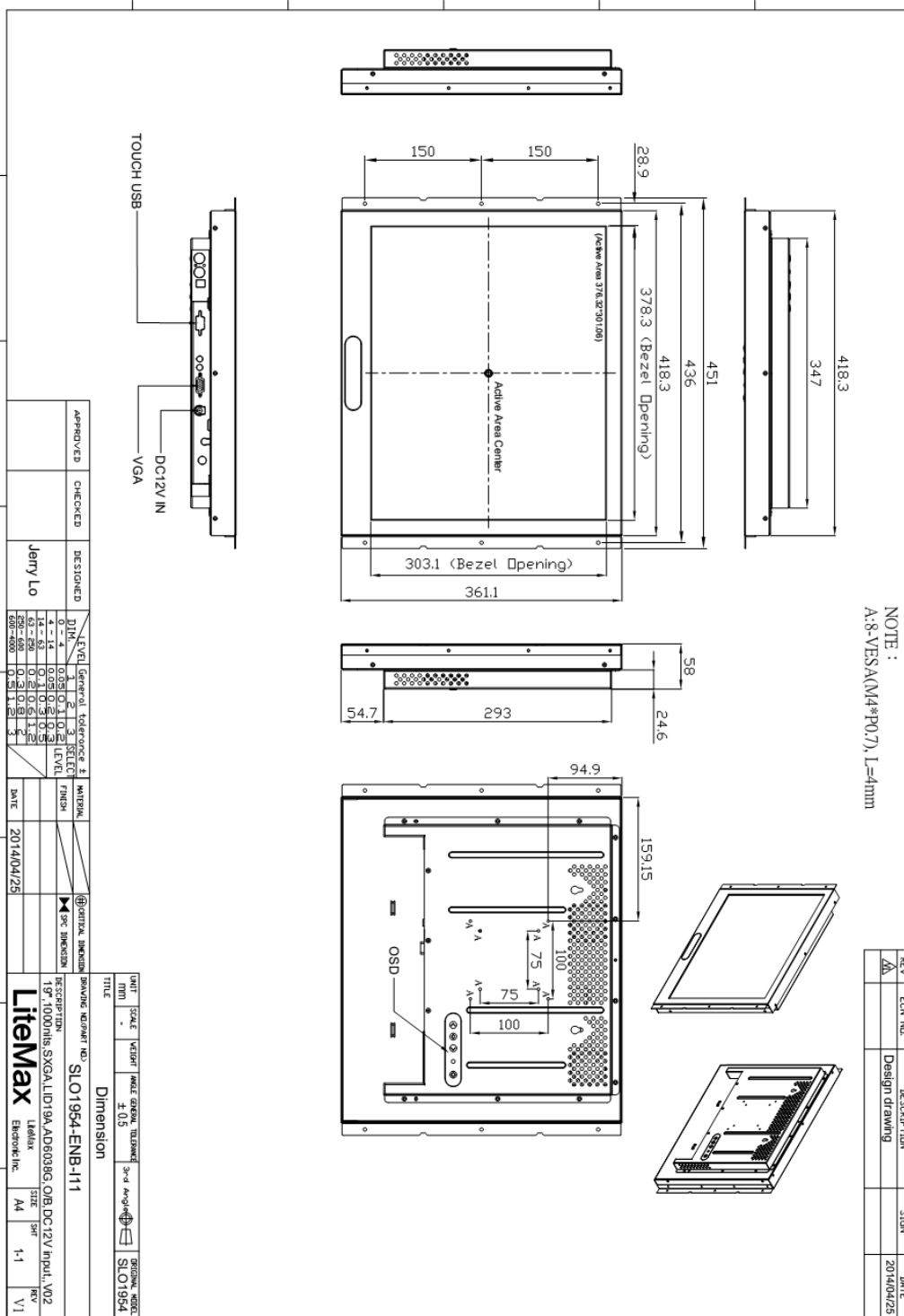


Mechanical Drawing

Outline Dimensions

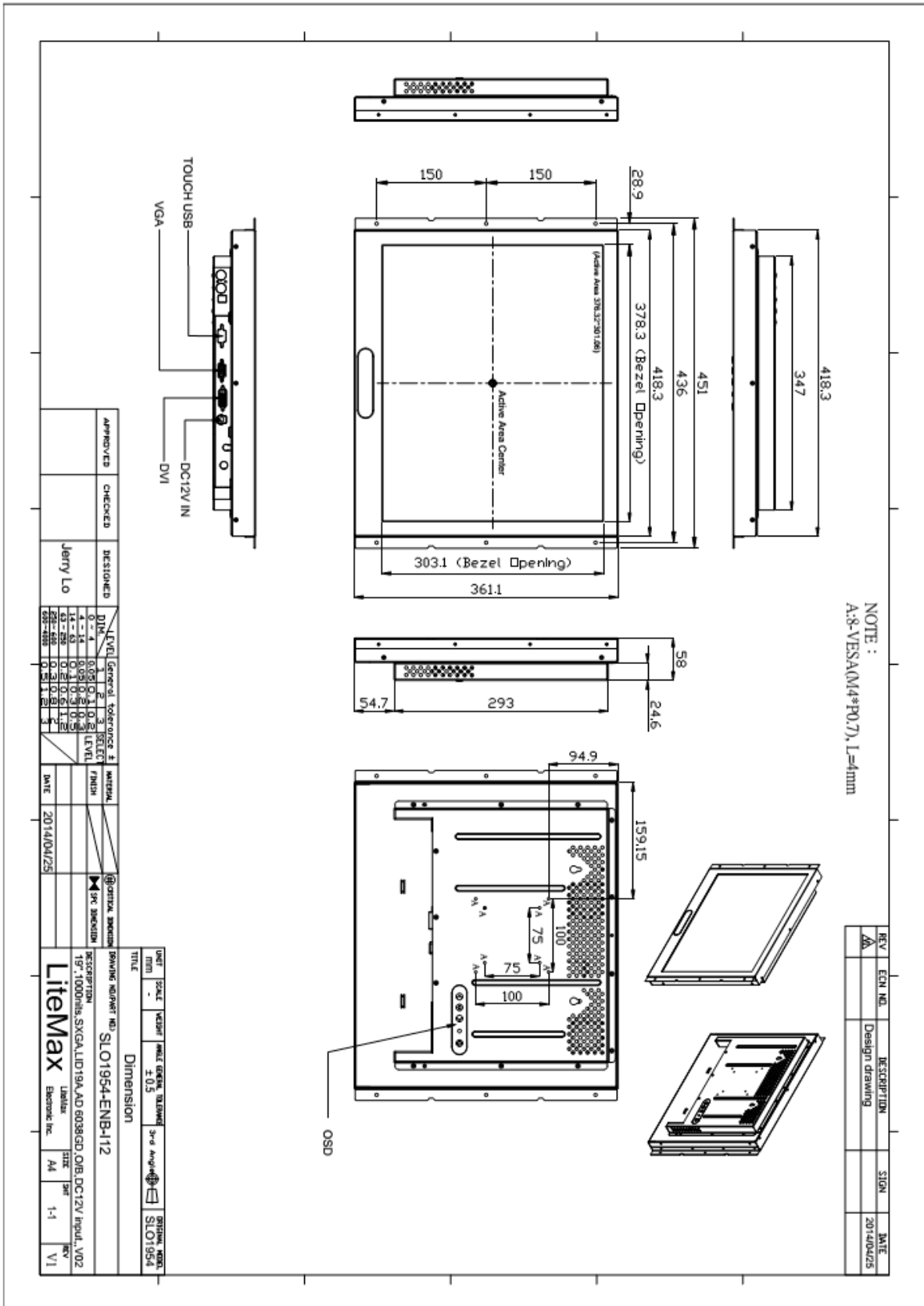
Unit:mm

SLO1954-ENB-111



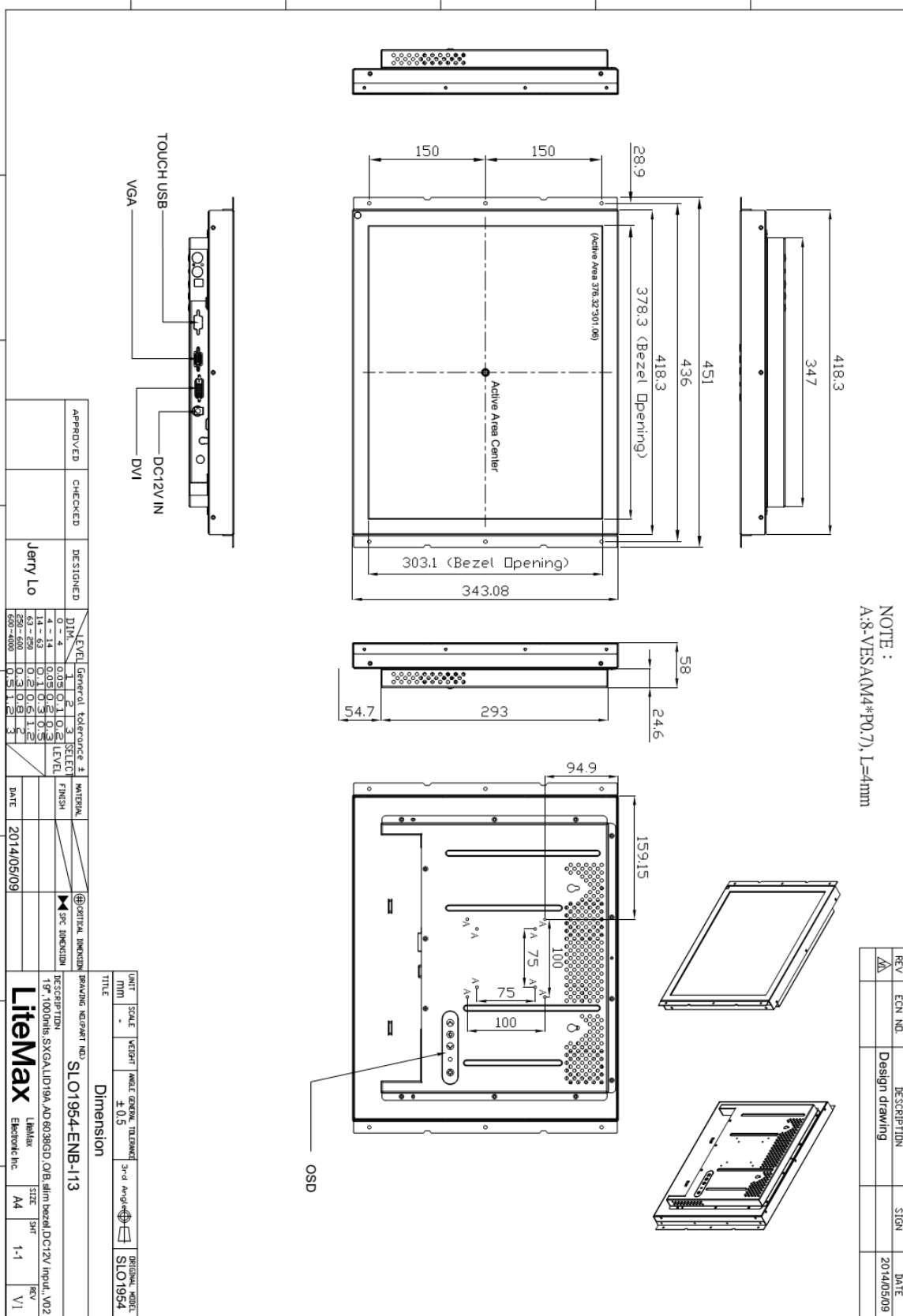


SLO1954-ENB-I12





SLO1954-ENB-113





Ordering Information

Part Number	Description
SLO1954-ENB-I11	19",1000nits,SXGA,LID19A.AD6038G,O/B,DC 12V input,V02
SLO1954-ENB-I12	19",1000nits,SXGA,LID19A.AD6038GD,O/B,DC 12V input.V02
SLO1954-ENB-I13	19",1000nits,SXGA,LID19A.AD6038GD,O/B,silm bezel.DC 12V input,V02

Optional Accessories

Part Number	Description
840612071300	ADAPTER.12V,6.66A,80W,SPU65-105,P
810618301010	CABLE.POWER.AC.1830mm USA type
810618301090	CABLE,POWER,AC,1830mm Europe type
810618301050	CABLE.POWER.AC.1830mm UK type
810618301170	CABLE.POWER,AC,1830mm Australia type
810618301030	CABLE.POWER.AC.1830mm Japan type