



SLO2325-E 23" Wide TFT LCD, LED Backlight 1000nits,FHD (1920x1080)

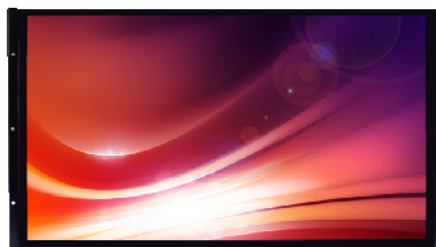
SLO2325-E is a 23" wide open frame display, full high definition (FHD) LCD panel, Low power consumption is remarkable. The monitor brings outstanding display quality, and guaranteeing product life cycle longevity, stability, and reliability. Perfectly suitable for Kiosk, ATM, POS, gaming machine, and gas pump.

Key Features

- LED Backlight
- High Shock & Vibration Resistance
- Low Power Consumption
- Wide Viewing Angle
- High Uniformity
- Low EMI Noise

Applications

Kiosk
Gaming
POS



Specifications

V1

Model No.	SLO2325-E
Description	23" Wide TFT LCD, LED Backlight 1000 nits, FHD
Active Display Area (mm)	509.184 (H) x 286.416(V) mm
Brightness	1000 cd/m ²
Resolution	1920 x 1080 (FHD)
Contrast Ratio	1000:1
Pixel Pitch (mm)	0.2652(H) x 0.2652(V) mm
Viewing Angle	R/L 178(Typ.), U/D 178(Typ.)
Display Colors	16.7M colors
Response Time (Typical)	14 ms
Sync	LVDS
Power Consumption	42W
Outline Dimensions (mm)	570.4 x 314.2 x 35.9 mm
Weight (Net)	4.2Kg
LED Driving Board	LID23A
Control Board (Optional)	<input type="checkbox"/> AD6038GD
<input type="checkbox"/> AD2662GD	VGA+DVI
F / R Control Button	<input type="checkbox"/> 4 Key
<input type="checkbox"/> 4 Key	Power Switch, Menu, Select (+,-),
OSD Menu	Brightness, Contrast, H/V Position, Color, Phase, Clock...
Optional	<input type="checkbox"/> AOT <input type="checkbox"/> Touch Screen

Specifications are subject to change without notice.

All brands or product names are trademarks or registered trademarks of their respective companies.

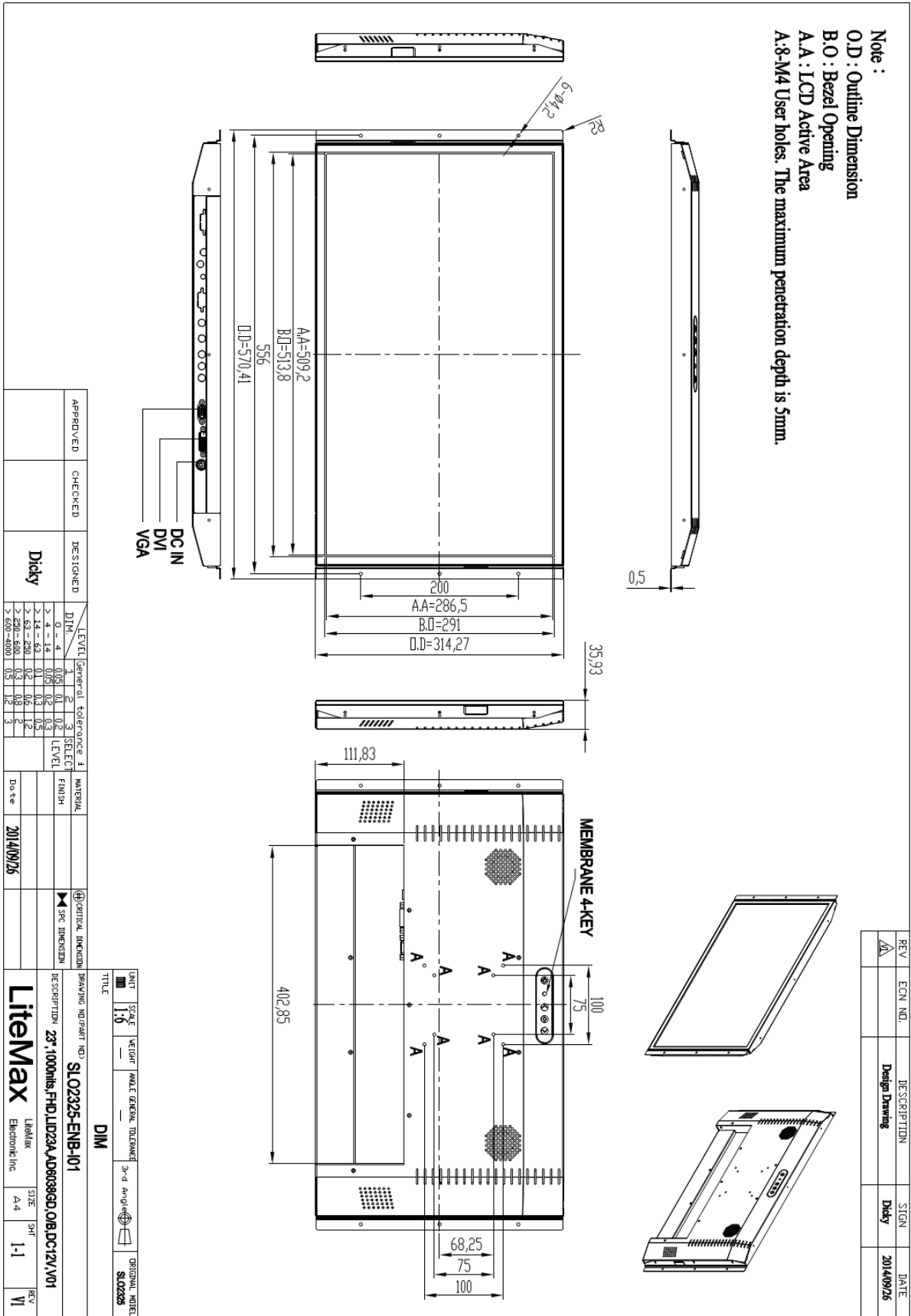
SLO = Panel + LED Driving Board + Control Board + Housing



Mechanical Drawing

Outline Dimensions

Unit:mm





Ordering Information

Model Name	Description
SLO2325-ENB-I01	23",1000nits,FHD,LID23A,AD6038GD,O/B,DC12V,V01

Optional Accessories

Part Number	Description
980000460010	SET.OTHER,ADAPTER REWORK.60W PAA060F WITH.POWER DIN 4pin lock,P
810618301010	CABLE.POWER.AC.1830mm USA type
810618301090	CABLE,POWER,AC,1830mm Europe type
810618301050	CABLE.POWER.AC.1830mm UK type
810618301170	CABLE.POWER,AC,1830mm Australia type
810618301031	CABLE.POWER.AC.1830mm Japan type