



## SLO3245 V2

### 32" Wide Open Frame TFT LCD Display, LED Backlight, 1200nits, WXGA

SLO3245 V2 is a wide open frame LCD display, built-in 1200nits high brightness for sunlight readable application. It offers the best visibility, performance and cost effective value. The high level of brightness together with fast response time and LED backlight technology, the monitor brings remarkable display quality. And guaranteeing product life cycle longevity, stability, and reliability.

#### Key Features

- Sunlight Readable
- LED Backlight
- High Shock & Vibration Resistance
- Low Power Consumption
- High Uniformity
- Low EMI Noise
- Wide Dimming
- Life Expectancy



### Specifications

V1

<b>Model No.</b>	<b>SLO3245 V2</b>
<b>Description</b>	32" Wide Open Frame TFT LCD Display, LED Backlight, 1200 nits, WXGA
<b>Display Area (mm)</b>	697.7 (H) x 392.3(V) mm
<b>Brightness</b>	1,200 cd/m <sup>2</sup>
<b>Resolution</b>	1366 x 768
<b>Contrast Ratio</b>	5000 : 1
<b>Pixel Pitch (mm)</b>	0.51(H) x 0.51(V)
<b>Viewing Angle</b>	176°(H), 176°(V)
<b>Display Colors</b>	16.7M colors
<b>Response Time (Typical)</b>	7ms (Typical)
<b>Power Input</b>	AC 100V-240V
<b>Power Consumption</b>	82W
<b>Dimensions (mm)</b>	781.4x428.8x53.5mm
<b>Weight (Net)</b>	10Kg
<b>LED Driving Board</b>	LID32A
<b>Control Board</b>	<input type="checkbox"/> AD2662GDHVA <input type="checkbox"/> AD2662GDVAR <input type="checkbox"/> AD2662GDHMVAR
<input type="checkbox"/> AD2662GDHVA	VGA+CVBS+S-Video+Audio (Optional DVI / HDMI )
<input type="checkbox"/> AD2662GDVAR	VGA+DVI (Optional CVBS / S-Video/ Component / Audio)
<input type="checkbox"/> AD2662GDHMVAR	VGA (Optional CVBS / S-Video/ Component / Audio / DVI / HDMI)
<b>F / R Control Button</b>	<input type="checkbox"/> 5 Key <input type="checkbox"/> 4K ey
<input type="checkbox"/> 5 Key	Power Switch, Menu, Select (+,-), Auto
<input type="checkbox"/> 4 Key	Power Switch, Menu, Select (+,-),
<b>OSD Menu</b>	Brightness, Contrast, H/V Position, Color, Phase, Clock...
<b>Optional</b>	<input type="checkbox"/> AOT <input type="checkbox"/> Touch Screen

*Specifications are subject to change without notice.*

*All brands or product names are trademarks or registered trademarks of their respective companies.*

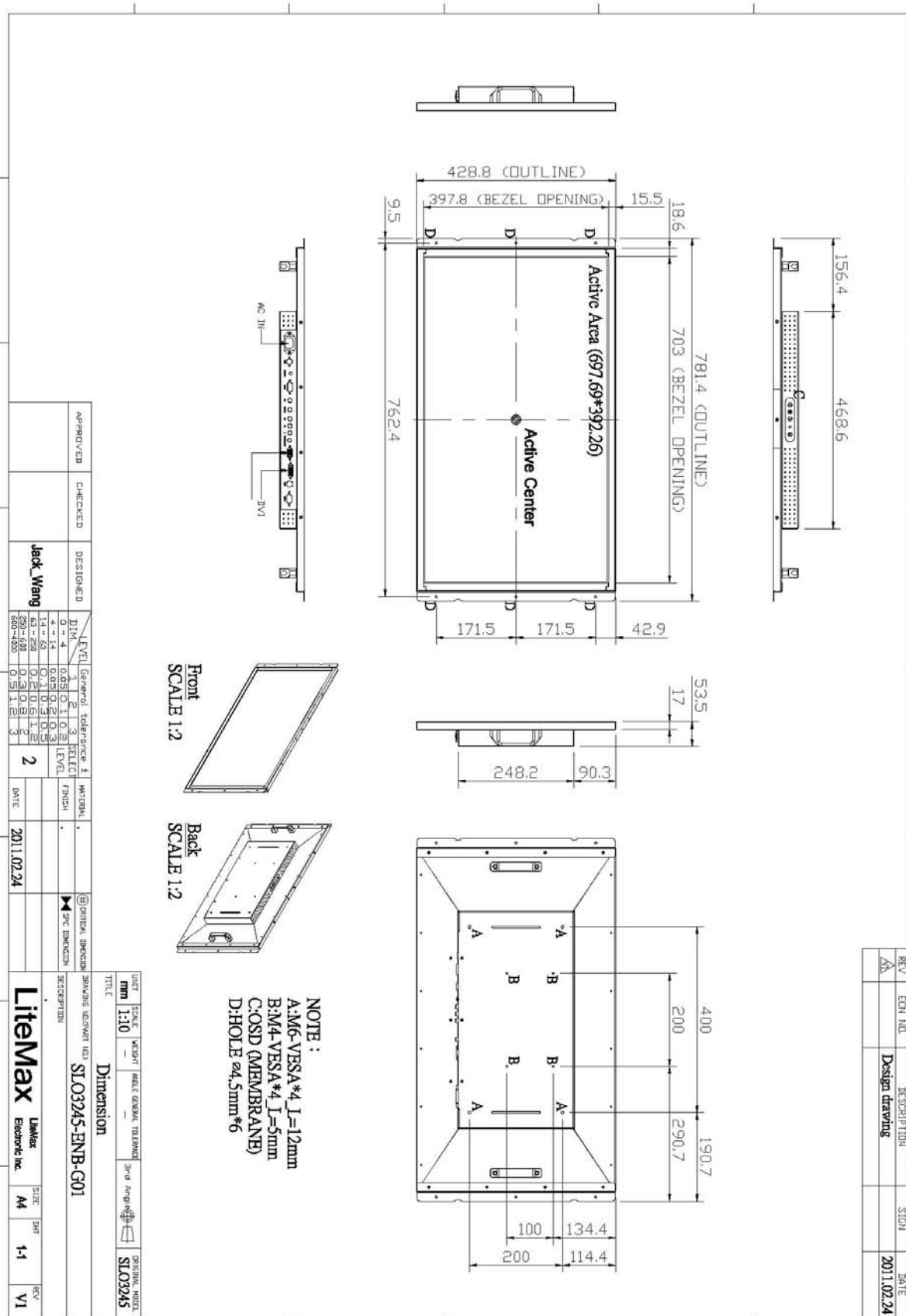
**SLO**= Panel+LED Driving Board+Control Board



## Mechanical Drawing

### Outline Dimensions

Unit:mm





### Ordering Information

Model Name	Description
<b>SLO3245-ENB-G11</b>	32", 1200nits, WXGA, LID32A.AD2662GD, O/B, AC100~240V.V2

### Optional Accessories

Part Number	Description
810618301010	CABLE.POWER.AC.1830mm USA type
810618301090	CABLE,POWER,AC,1830mm Europe type
810618301050	CABLE.POWER.AC.1830mm UK type
810618301170	CABLE.POWER,AC,1830mm Australia type
810618301030	CABLE.POWER.AC.1830mm Japan type