



SLO3255 V4

32" Wide TFT LCD Display, LED Backlight, 1000nits, FHD

SLO3255 V4 is a wide LCD display, built-in 1000nits high brightness for sunlight readable application. It offers the best visibility, performance and cost effective value. The high level of brightness together with fast response time and LED backlight technology, the monitor brings remarkable display quality. And guaranteeing product life cycle longevity, stability, and reliability.

Key Features

- Sunlight Readable
- LED Backlight
- FHD Resolution
- High Shock & Vibration Resistance
- Low EMI Noise
- Wide Dimming
- Wide Viewing Angle
- Life Expectancy
- Fanless Design



Specifications

V1

Model No.	SLO3255 V4
Description	32" Wide TFT LCD Display, LED Backlight, 1000 nits, FHD
Display Area (mm)	698.4 (H) x 392.85(V) mm
Brightness	1,000 cd/m ²
Resolution	1920 x 1080
Contrast Ratio	5800 : 1
Pixel Pitch (mm)	0.3637 (H) x 0.3637 (V)
Pixel Pre inch (PPI)	70
Viewing Angle	178°(H), 178°(V)
Color Saturation (NTSC)	80%
Display Colors	16.7M colors
Response Time (Typical)	8 ms (Typical)
Sync	LVDS
Operating Temperature	0°C~50°C
Storage Temperature	-20°C~60°C
Power Consumption	71w
Dimensions (mm)	782.4 x 426.85 x 60.4mm
Weight (Net)	12.0Kg
LED Driving Board	LID32B
Control Board	<input type="checkbox"/> AD2662GDHMVAR
<input type="checkbox"/> AD2662GDHMVAR	VGA (Optional CVBS / S-Video/ Component / Audio / DVI / HDMI)
F / R Control Button	<input type="checkbox"/> 4Key
<input type="checkbox"/> 4 Key	Power Switch, Menu, Select (+,-),
OSD Menu	Brightness, Contrast, H/V Position, Color, Phase, Clock...
Optional	<input type="checkbox"/> AOT <input type="checkbox"/> Touch Screen

Specifications are subject to change without notice.

All brands or product names are trademarks or registered trademarks of their respective companies.

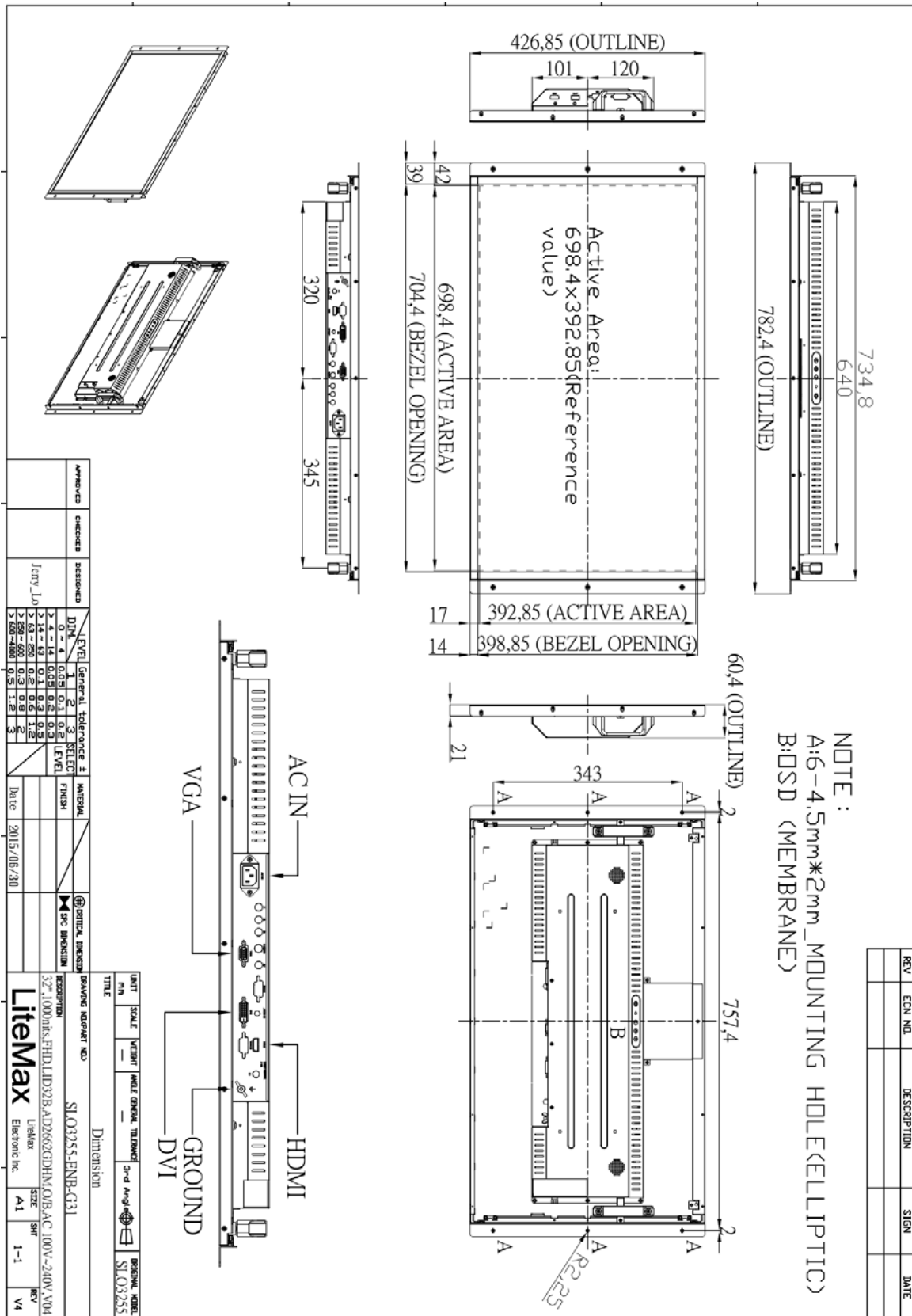
SLO= Panel + LED Driving Board + Control Board



Mechanical Drawing

Outline Dimensions

Unit:mm



REV	ECN NO.	DESCRIPTION	SIGN	DATE

APPROVED	CHECKED	DESIGNED	DWG	LEVEL	TOLERANCE	MATERIAL	DATE
		Jerry Liu	0-0.1 0.1-0.2 0.2-0.5 0.5-1.0 1.0-3.0 3.0-6.0 6.0-30.0 30.0-100.0	1 2 3 4 5 6 7 8	±		2015/08/30

UNIT	SCALE	WEIGHT	NOTE	GENERAL	TOLERANCE	3rd Angle	DESCRIPTION	DRAWING NO.	DRAWING NO.	REV
mm							52" 1000dots.FHD.L1D32B.A1D2662GHM.OTB.AC.100V-240V.V04	SL03255.ENBR-G31	SL03255	V4



Ordering Information

Model Name	Description
SLO3255-ENB-G31	32",1000nits,FHD,LID32B.AD2662GDHM,O/B,AC100~240V.V04

Optional Accessories

Part Number	Description
810618301010	CABLE.POWER.AC.1830mm USA type
810618301090	CABLE,POWER,AC,1830mm Europe type
810618301050	CABLE.POWER.AC.1830mm UK type
810618301170	CABLE.POWER,AC,1830mm Australia type
810618301031	CABLE.POWER.AC.1830mm Japan type