



product description

19", 1600Nits, PCT, Intel Core i5-4570TE, DDR3 SODIMM/4GB, SSD/64GB, RJ45*2, USB-3*2, USB-2*4, COM*2, DVI*1, VGA*1, Audio Jack*2(Mic-in,Line-out), PS2*1(KB&Mouse), AOT, WP, AC100~240V input

Introduction

Features:

- 1600 nits Sunlight Readable LCD
- Long Life, Low Power Consumption LED Backlight
- Advanced Optical Bonding (AOT)
- High Shock & Vibration Resistance
- PCT Multi-Touch Support
- IP65 Fascial Waterproof

Application:

- Marine
- Outdoor Display



Specifications Preliminary

Model Number	NPS1968
LCD Display	
Backlight	19" LED Backlight
Active Display Area	377.32x302.06 mm
Brightness	1600 cd/m ²
Resolution	1280x1024 (SXGA)
Contrast Ratio	1000:1
Touch Screen	PCT Multi-Touch
Optical	AOT
System	
Processor	Intel Core i5
Chip Set	Intel H81 Express Chipset
Memory	DDR III SODIMM 4GB
Ethernet	Realtek 8111F PCIe Gigabit LAN
Storage	SATA 2.5" HDD (Optional)
I/O Port	RJ45*2,USB-3*2,USB-2*4,COM*2,DVI*1,VGA*1, Audio Jack*2(Mic-in,Line-out),PS2*1(KB&Mouse),Power AC-in x1
BIOS	AMI
Wake on LAN	Yes
Watchdog Timer	1~255 steps programmable
H/W Status Monitor	Support power supply voltages, fan speed and temperature monitoring
Expansion Interface	Mini PCIe (internal)
Power	
Voltage	AC Input: AC 100 ~ 240V ; DC Input (Optional)
Power consumption	90W
Mechanical	
IP Rating	Fascial waterproof to IP65 standards when console mounted.
Construction	Aluminum Alloy Chassis
Mounting	Panel (Flush) Mount , VESA75/VESA100, Stand Mount
Dimension	469.5mm (W) x 427.35mm(H) x 92.2mm(D)
Net Weight	5.5kg
Environmental	
Operating Temperature	0°C~50°C
Storage Temperature	-20°C ~ 60°C
Operating Humidity	5~95% @ 40°C, non-condensing
Certification	Designed to meet CE/FCC

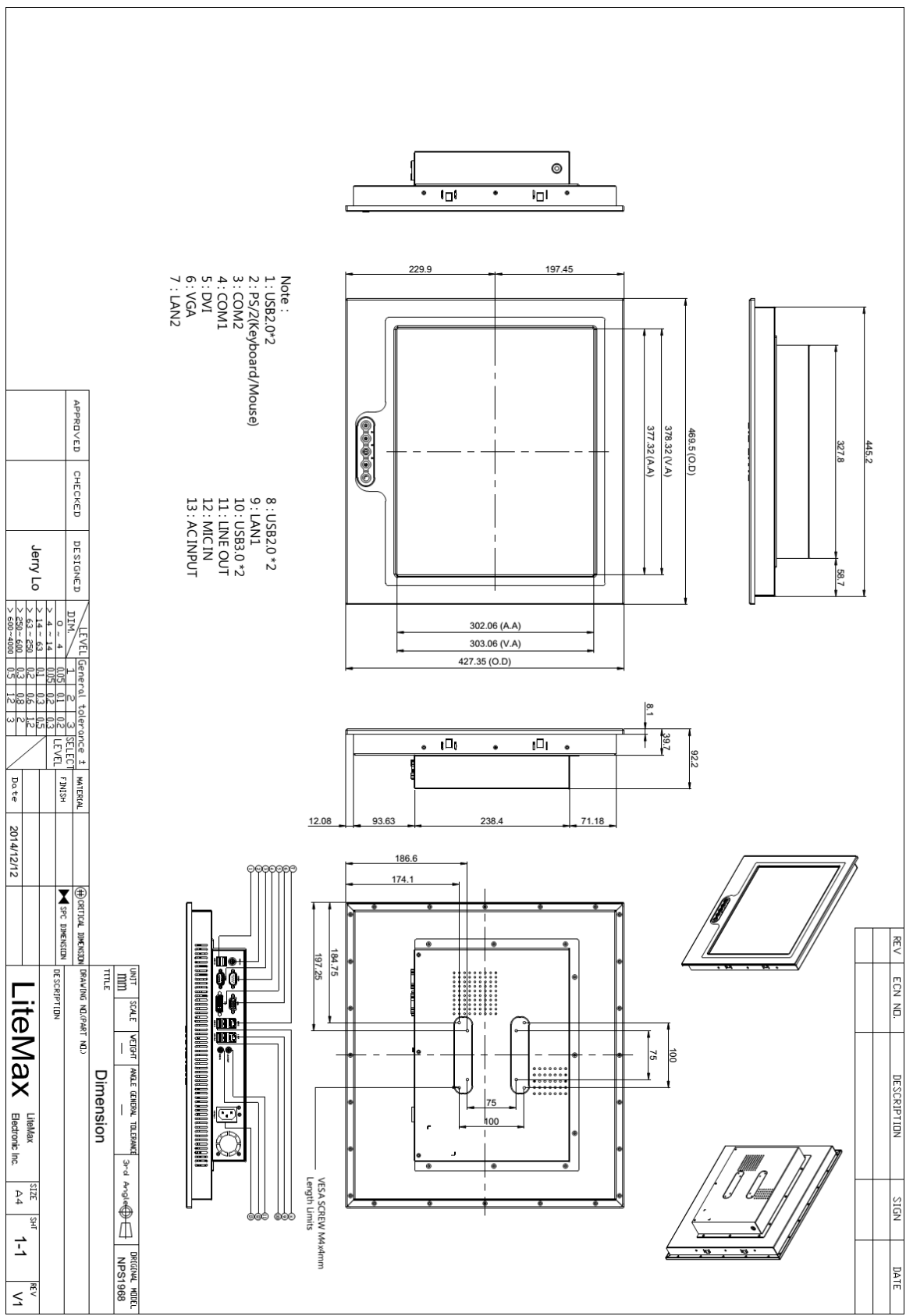
*Specifications are subject to change without notice.
All brands or product names are trademarks or registered trademarks of their respective companies.*



Mechanical Drawing

Outline Dimensions

Unit : mm



APPROVED	CHECKED	DESIGNED	DATE	MATERIAL	TITLE
		Jerry Lo	2014/12/12		Dimension

LEVEL	General Tolerance	SELECT LEVEL	FINISH	DESCRIPTION
0	±0.15	0.1	0.2	
1	±0.2	0.2	0.3	
2	±0.3	0.3	0.4	
3	±0.4	0.4	0.5	
4	±0.5	0.5	0.6	
5	±0.6	0.6	0.7	
6	±0.7	0.7	0.8	
7	±0.8	0.8	0.9	
8	±0.9	0.9	1.0	
9	±1.0	1.0	1.1	
10	±1.1	1.1	1.2	
11	±1.2	1.2	1.3	
12	±1.3	1.3	1.4	
13	±1.4	1.4	1.5	

UNIT: DIM	SCALE: 1:1
DRAWING NO: Litemax	SIZE: A4
DATE: 2014/12/12	REV: 1-1
DRAWING NO: Litemax	REV: V1

REV	ECN NO.	DESCRIPTION	SIGN	DATE



Ordering Information

Part Number	Description
NPS1968-ETA-A01	19",1600nits,PCT,Intel Core i5-4570TE,DDR3 SODIMM/4GB,SSD/64GB,RJ45*2,USB-3*2,USB-2*4,COM*2,VGA*1,Audio Jack*2,PS2*1,LS,AOT,WP,AC100~240V

Optional Accessories

Part Number	Description
321038156800	Print,Label,Serial,NPS,1568.V0.Microsoft Windows 7.Professional for Embedded. Systems,42C-00022,P
810618301010	CABLE.POWER.AC.1830mm USA type
810618301090	CABLE,POWER,AC,1830mm Europe type
810618301050	CABLE.POWER.AC.1830mm UK type
810618301170	CABLE.POWER,AC,1830mm Australia type
810618301031	CABLE.POWER.AC.1830mm Japan type