



SSD1915

19" Resizing LCD, 1000 nits LED backlight, 1680x342 ultra wide aspect ratio 16:3

SSD1915 is an innovative ultra-wide, sunlight readable, LED backlight LCD display. It provides LCD panel with specific ratios for digital signage, public transportation, exhibition hall, department store, vending machine and industrial applications. Incorporating with A.D. control board and backlight design, it is high brightness and sunlight readable panel, can display high-quality video with energy-efficient.

Key Features

- Resizing LCD
- Ultra Wide Screen (16 : 3)
- Sunlight Readable
- LED Backlight
- High Brightness 1000 nits
- Wide Viewing Angle
- Low Power Consumption
- High Uniformity (90%)
- Wide Dimming
- Life Expectancy (70,000hrs)
- Slim Bezel



Specifications

Preliminary

Model No.	SSD1915
Description	19" Resizing LCD, 1000 nits LED backlight
Display Area	473.76 x 96.44 mm
Brightness	1,000 cd/m ²
Resolution	1680 x 342
Aspect Ratio	16 : 3
Contrast Ratio	2000:1
Pixel Pitch (mm)	0.282 x 0.282
Viewing Angle	178°(H), 178°(V)
Display Colors	16.7M
Response Time (Typical)	20 ms
Sync	LVDS
Power Consumption	25W
Dimensions (mm)	496.6 x 126 x 57.3
Weight (Net)	2.3kg
LED Driving Board	LID19A01
Control Board (Optional)	AD5621G / AD5621GA / AD2662GD / AD2662GDVAR
<input type="checkbox"/> AD5621G/AD5621GA	VGA / VGA + Audio
<input type="checkbox"/> AD2662GD	VGA + DVI
<input type="checkbox"/> AD2662GDVAR	VGA + DVI (Optional AV/ S-Video / Component / Audio)
<input type="checkbox"/> Others	
F / R Control Button	5 Key / 4 Key
<input type="checkbox"/> 4 Key	Power Switch, Menu, Select (+,-),
<input type="checkbox"/> 5 Key	Power Switch, Menu, Select (+,-),Auto
OSD Menu	Brightness, Contrast, H/V Position, Color, Phase, Clock...
Optional	<input type="checkbox"/> Touch Screen

Specifications are subject to change without notice.

All brands or product names are trademarks or registered trademarks of their respective companies.

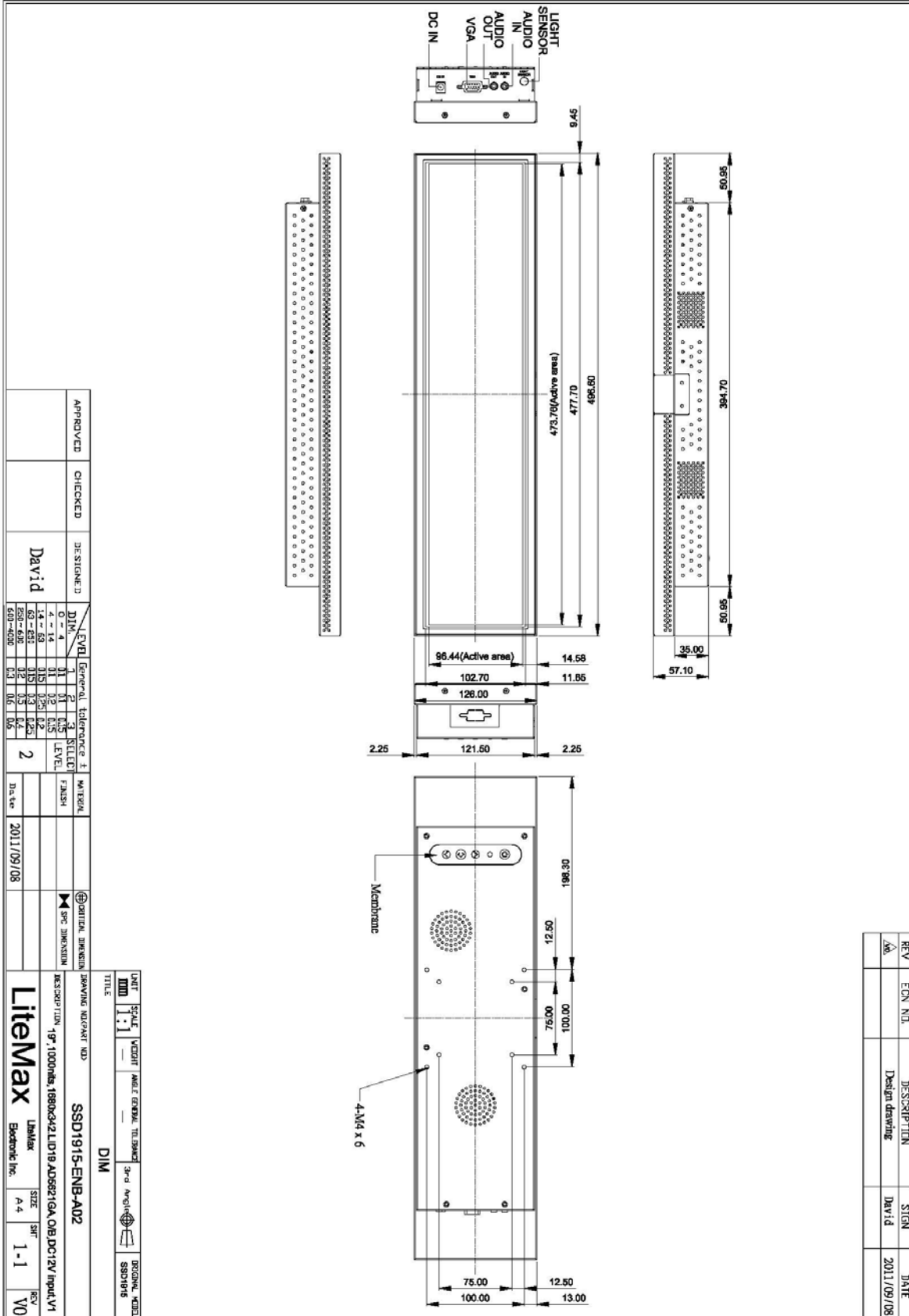
SSD = Panel+ LED Driving Board + Control Board



Mechanical Drawing

Outline Dimensions

Unit: mm





Ordering Information

Model Name	Description
SSD1915-ENB-A02	19",1000nits,1680*342,LID19,AD5621GA,O/B,DC12V input,V1

Optional Accessories

Part Number	Description
840612051100	ADAPTER.12V.5A.60W.EA1050A,P
810618301010	CABLE.POWER.AC.1830mm USA type
810618301090	CABLE,POWER,AC,1830mm Europe type
810618301050	CABLE.POWER.AC.1830mm UK type
810618301170	CABLE.POWER,AC,1830mm Australia type
810618301030	CABLE.POWER.AC.1830mm Japan type