



## SSD1916-A

### 19.1" Resizing LCD Display, Brightness is 1200 nits, LED backlight, 1920x388 ultra wide aspect ratio 16:3.2

SSD 1916-A is an innovative ultra-wide, LED backlight LCD module. It provides LCD panel with specific ratios for digital signage, public transportation, exhibition hall, department store, and vending machine applications.

#### Key Features

- Resizing LCD
- Ultra Wide Screen (16 : 3.2)
- LED Backlight
- High Brightness 1200nits
- Low Power Consumption
- Wide Viewing Angle
- High Uniformity
- Wide Dimming



### Specifications

V1

<b>Model No.</b>	<b>SSD1916-A</b>
<b>Description</b>	19.1" Resizing LCD Display, 1200nits, LED backlight, 1920x388
<b>Display Area</b>	476.6x 96.3 mm
<b>Brightness</b>	1200nits
<b>Resolution</b>	1920 x 388
<b>Aspect Ratio</b>	16 : 3.2
<b>Contrast Ratio</b>	3000:1
<b>Pixel Pitch (mm)</b>	0.248 x 0.248
<b>Viewing Angle</b>	178°(H), 178°(V)
<b>Display Colors</b>	16.7M
<b>Response Time (Typical)</b>	25 ms
<b>Power Consumption</b>	22.9W
<b>Dimensions (mm)</b>	508 x 132 x 47 mm
<b>Weight (Net)</b>	2.39 kg
<b>LED Driving Board</b>	LID19A
<b>Control Board (Optional)</b>	<input type="checkbox"/> AD2662GD <input type="checkbox"/> AD2662GDHMVAR
<input type="checkbox"/> AD2662GD	VGA+DVI (Optional S-Video/ Component / Audio)
<input type="checkbox"/> AD2662GDHMVAR	VGA + DVI + HDMI (Optional AV/ S-Video / Component / Audio)
<b>F / R Control Button</b>	<input type="checkbox"/> 5 Key <input type="checkbox"/> 4 Key
<input type="checkbox"/> 5 Key	Power Switch, Menu, Select (+,-), Auto
<input type="checkbox"/> 4 Key	Power Switch, Menu, Select (+,-),
<b>OSD Menu</b>	Brightness, Contrast, H/V Position, Color, Phase, Clock...
<b>Optional</b>	<input type="checkbox"/> AOT <input type="checkbox"/> Touch Screen

Specifications are subject to change without notice.

All brands or product names are trademarks or registered trademarks of their respective companies.

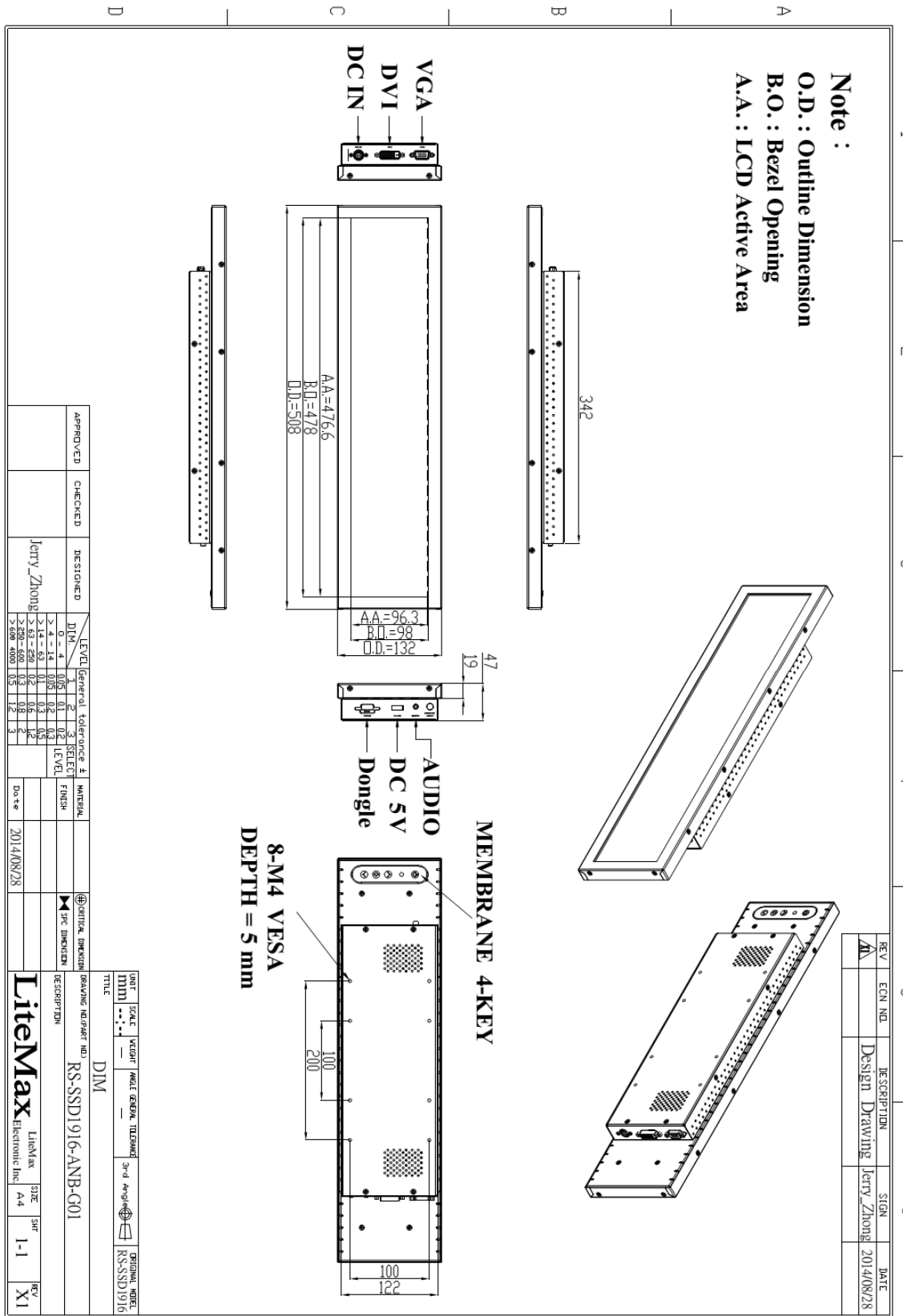
**SSD= Panel+ LED Driving Board + Control Board**



Mechanical Drawing

Panel Outline Dimensions

Unit: mm





### Ordering Information

Part Number	Description
<b>SSD1916-ANB-G01</b>	19.1",1200nits,1920*388,LID19A.AD2662GDHMA,HDMI+USB board.Spesker*2,DC 12V,V01

### Optional Accessories

Part Number	Description
<b>840612051210</b>	<b>ADAPTER,AC/DC,12V/5.4A,65W,Atech OEM A065112-TDx,4P SLIDING CAP,P</b>
<b>810618301010</b>	<b>CABLE.POWER.AC.1830mm USA type</b>
<b>810618301090</b>	<b>CABLE,POWER,AC,1830mm Europe type</b>
<b>810618301050</b>	<b>CABLE.POWER.AC.1830mm UK type</b>
<b>810618301170</b>	<b>CABLE.POWER,AC,1830mm Australia type</b>
<b>810618301030</b>	<b>CABLE.POWER.AC.1830mm Japan type</b>