



## SSF/SSH 1722

### 17.2" Resizing LCD, 400 nits LED backlight, 1366x510 ultra wide aspect ratio 16:6

SSF/SSH1722 is an innovative ultra-wide, sunlight readable, LED backlight LCD display. It provides LCD panel with specific ratios for digital signage, public transportation, exhibition hall, department store, vending machine and industrial applications. Incorporating with A.D. control board and backlight design, it is high brightness and sunlight readable panel, can display high-quality video with energy-efficient.

#### Key Features

- Resizing LCD
- Ultra Wide Screen (16 : 6)
- Sunlight Readable
- LED Backlight
- High Brightness 400 nits
- Low Power Consumption
- High Uniformity (90%)
- Wide Dimming
- Life Expectancy (70,000hrs)
- Slim Bezel



### Specifications

Preliminary

<b>Model No.</b>	<b>SSF/SSH1722</b>
<b>Description</b>	17.2" Resizing LCD, 400 nits LED backlight, 1366x510
<b>Display Area</b>	409.8 x 153 mm
<b>Brightness</b>	400 cd/m <sup>2</sup>
<b>Resolution</b>	1366 x 510
<b>Aspect Ratio</b>	16 : 6
<b>Contrast Ratio</b>	1500:1
<b>Pixel Pitch (mm)</b>	0.3 x 0.3
<b>Viewing Angle</b>	170°(H), 160°(V)
<b>Display Colors</b>	16.7M
<b>Response Time (Typical)</b>	5 ms
<b>Sync</b>	LVDS
<b>Power Consumption</b>	15 W
<b>Dimensions (mm)</b>	430.4 x 178.4 x 12.0 mm
<b>Weight (Net)</b>	0.9 kg
<b>LED Driving Board</b>	<b>LID17</b>
<b>Control Board (Optional)</b>	<b>AD6038GD</b>
<input type="checkbox"/> AD6038GD	VGA + DVI
<input type="checkbox"/> Others	
<b>F / R Control Button</b>	5 Key / 4 Key
<input type="checkbox"/> 4 Key	Power Switch, Menu, Select (+, -),
<input type="checkbox"/> 5 Key	Power Switch, Menu, Select (+, -), Auto
<b>OSD Menu</b>	Brightness, Contrast, H/V Position, Color, Phase, Clock...
<b>Optional</b>	<input type="checkbox"/> Touch Screen

Specifications are subject to change without notice.

All brands or product names are trademarks or registered trademarks of their respective companies.

**SSF** = Panel+ LED Driving Board

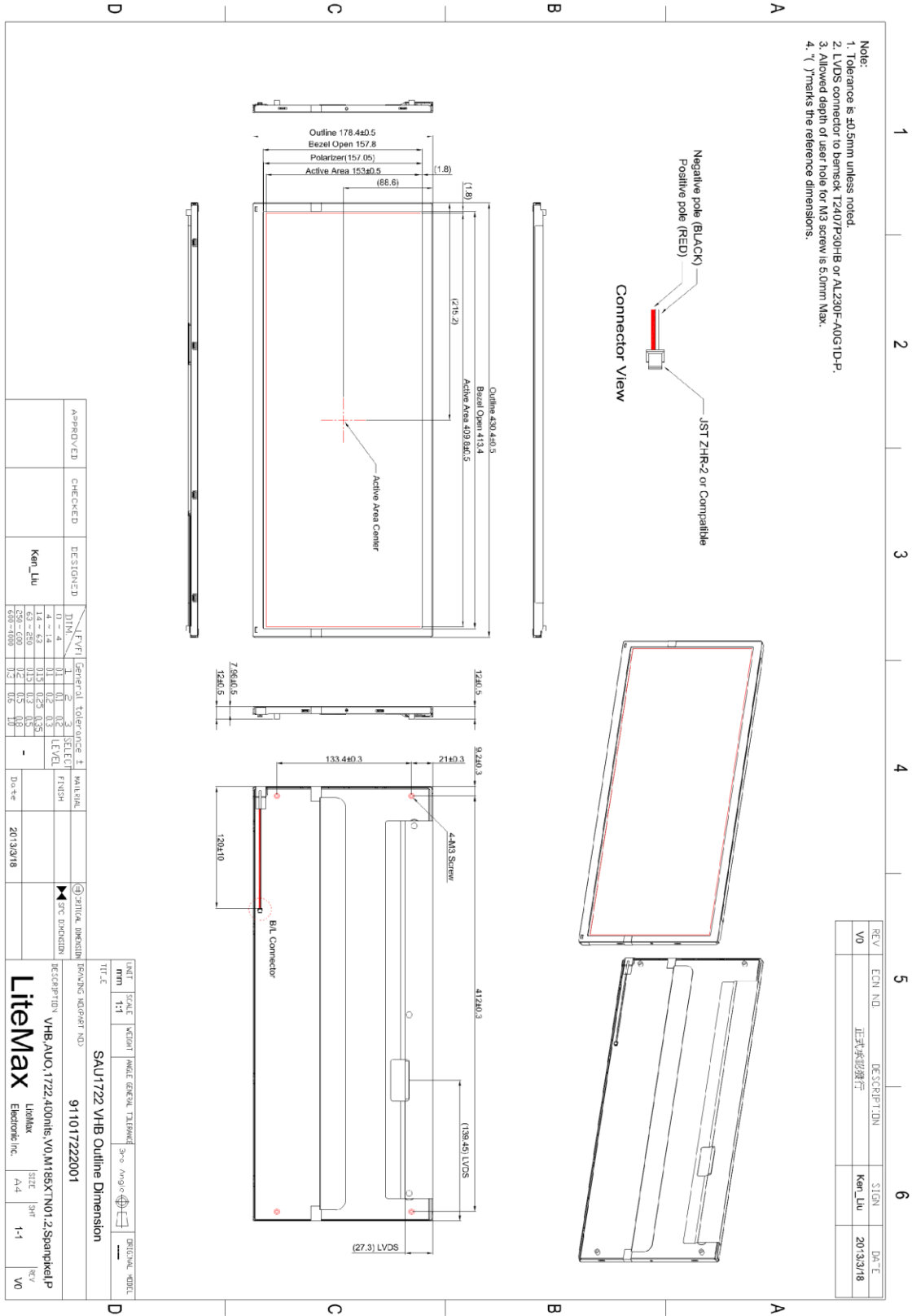
**SSH** = Panel+ LED Driving Board + Control Board



# Mechanical Drawing

## Outline Dimensions

Unit: mm



REV	ECN NO.	DESCRIPTION	SIGN.	DATE
V0		正式承認發行	Ken_Liu	2013/3/18

APPROVED	CHECKED	DESIGNED	GENERAL TOLERANCE ±			MATERIAL	FINISH	DATE
			F1	F2	F3			
		Ken_Liu	0.3	0.3	0.3			2013/3/18

UNIT	SCALE	WEIGHT	MODEL	DATE	REV
mm	1:1		SAU1722 VHB Outline Dimension		V0

DESCRIPTION	ISSUE	DATE	REV
VHB-AUO-1722-400DmE, V0, M155X1N01.2, Spanghell P	A4	1-1	V0



### Ordering Information

Model Name	Description
SSF1722-ANN-A01	17.2",400nits,1366*512.LID17,V01(4 in 1)
SSH1722-ANN-G01	17.2",400nits,1366*512.LID17.AD6038GD,V01(4 IN 1)

### Optional Accessories

Part Number	Description
840612051103	ADAPTER,12V,5A,60W.KPA-060F,DC Plug,2.1*5.5mm.P
810618301010 (Optional)	CABLE.POWER.AC.1830mm.(US Type).3PIN PLUG TO SOCKET.SVT(SPT-2 )18AWG 3C BLACK.P
810618301090 (Optional)	CABLE,POWER,AC,1830mm.(EU Type) 3PIN PLUG TO.SOCKET,H05VV-F 3G.0.75MMSQ BLACK,P
810618301050 (Optional)	CABLE,POWER,AC,1830mm.UK(FUSE) 3PIN PLUG TO.SOCKET,H05VV-F 3C(3G) 0.75MMSQ BLACK,P
810618301170 (Optional)	CABLE.POWER,AC,1830mm. (AU Type) 3PIN PLUG TO 2P SOCKET.LTSA 0.75MMSQ BLACK,P
810618301030 (Optional)	CABLE.POWER.AC.1830mm.(JP Type).2PIN PLUG Y TERMINAL TO. SOCKET.VCTF 3C 0.75MMSQ BLACK,P