



SSF/SSH2735-A

27.3" Resizing LCD, 1000 nits LED backlight, 945x1080 Square aspect ratio 8:9

SSF/SSH2735-A is an innovative Square, sunlight readable, LED backlight LCD display. It provides LCD panel with specific ratios for digital signage, public transportation, exhibition hall, department store, vending machine and industrial applications. Incorporating with A.D. control board and backlight design, it is high brightness and sunlight readable panel, can display high-quality video with energy-efficient.

Key Features

- Resizing LCD
- Square Screen (8 : 9)
- Sunlight Readable
- LED Backlight
- High Brightness 1000 nits
- Low Power Consumption
- Wide Dimming
- Slim Bezel
- Life Expectancy (70,000hrs)
- Wide Viewing Angle



Specifications

Preliminary

Model No.	SSF/SSH2735-A
Description	27.3" Resizing LCD, 1000 nits LED backlight, 945x1080
Display Area	457.85*523.26 mm
Brightness	1000 cd/m ²
Resolution	945 x 1080
Aspect Ratio	8 : 9
Contrast Ratio	3000:1
Pixel Pitch (mm)	0.4845 (H) x 0.4845(W)
Viewing Angle	178°(H), 178°(V)
Display Colors	16.7M
Response Time (Typical)	6.5 ms
Sync	LVDS
Power Consumption	50W
Dimensions (mm)	502.7 x 557.1 x 18.7
Weight (Net)	4.1 kg
LED Driving Board	LID27A
Control Board (Optional)	AD2662GDHMA
<input type="checkbox"/> AD2662GDHMA	VGA + DVI + HDMI + Audio
F / R Control Button	5 Key / 4 Key
<input type="checkbox"/> 4 Key	Power Switch, Menu, Select (+,-),
OSD Menu	Brightness, Contrast, H/V Position, Color, Phase, Clock...
Optional	N/A

Specifications are subject to change without notice.

All brands or product names are trademarks or registered trademarks of their respective companies.

SSF = Panel + LED Driving Board

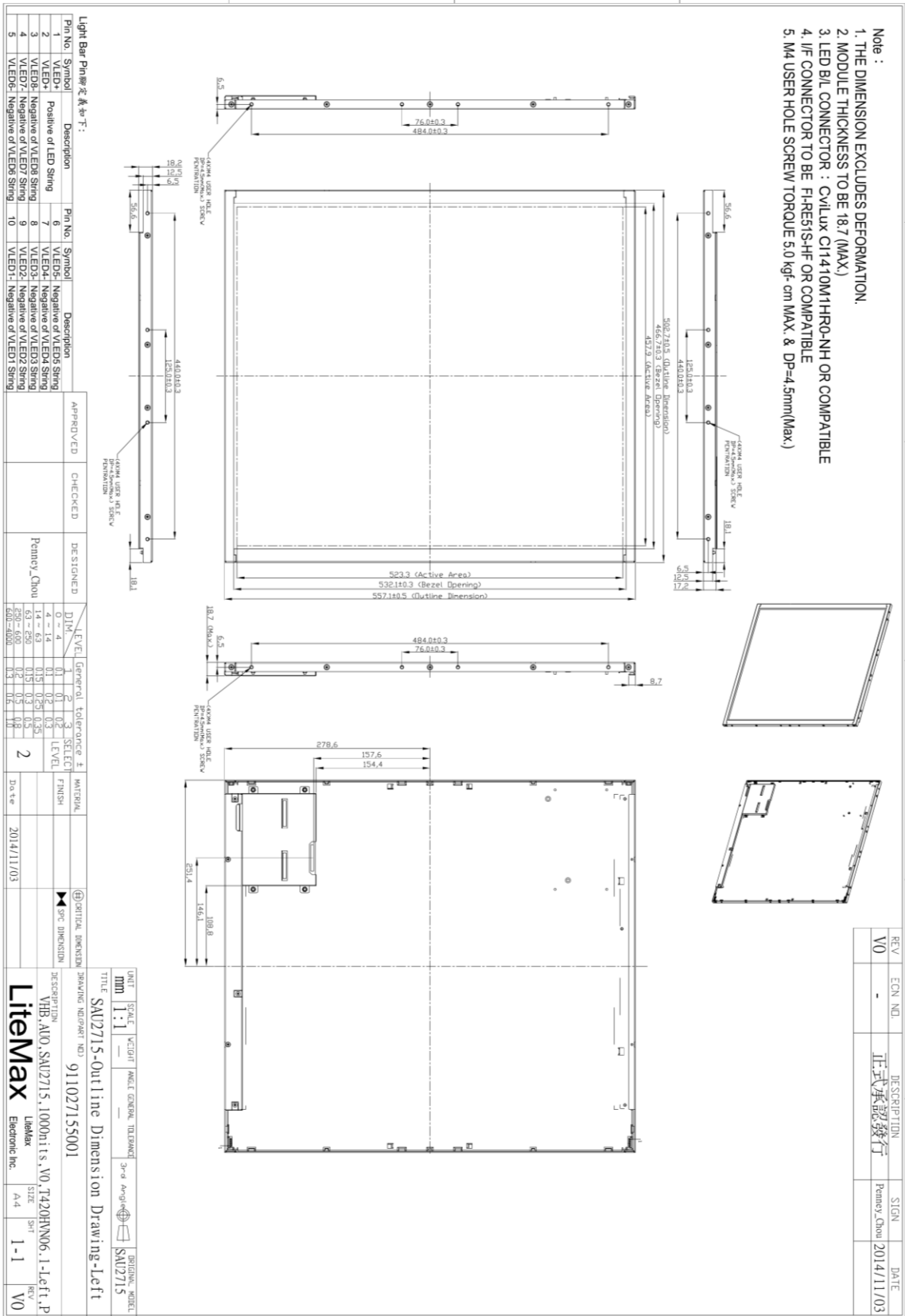
SSH = Panel + LED Driving Board + Control Board



Mechanical Drawing

Outline Dimensions

Unit: mm





Ordering Information

Model Name	Description
SSF2735-ANN-A01	27.3",1000nits,945*1080, LID27A,V01 (5 in 1)
SSH2735-ANN-G01	27.3",1000nits,945*1080, LID27A, AD2662GM,DC12V ,V01 (5 in 1)

Optional Accessories

Part Number	Description
810618301010 (Optional)	CABLE.POWER.AC.1830mm.(US Type).3PIN PLUG TO SOCKET.SVT(SPT-2)18AWG 3C BLACK,P.
810618301090 (Optional)	CABLE,POWER,AC,1830mm.(EU Type) 3PIN PLUG TO.SOCKET,H05VV-F 3G.0.75MMSQ BLACK,P
810618301050 (Optional)	CABLE,POWER,AC,1830mm.UK(FUSE) 3PIN PLUG TO.SOCKET,H05VV-F 3C(3G) 0.75MMSQ BLACK,P
810618301170 (Optional)	CABLE.POWER,AC,1830mm. (AU Type) 3PIN PLUG TO 2P SOCKET.LTSA 0.75MMSQ BLACK,P
810618301030 (Optional)	CABLE.POWER.AC.1830mm.(JP Type).2PIN PLUG Y TERMINAL TO. SOCKET.VCTF 3C 0.75MMSQ BLACK,P